

Demography

**Compendium of Health Related Statistics
April 2005**

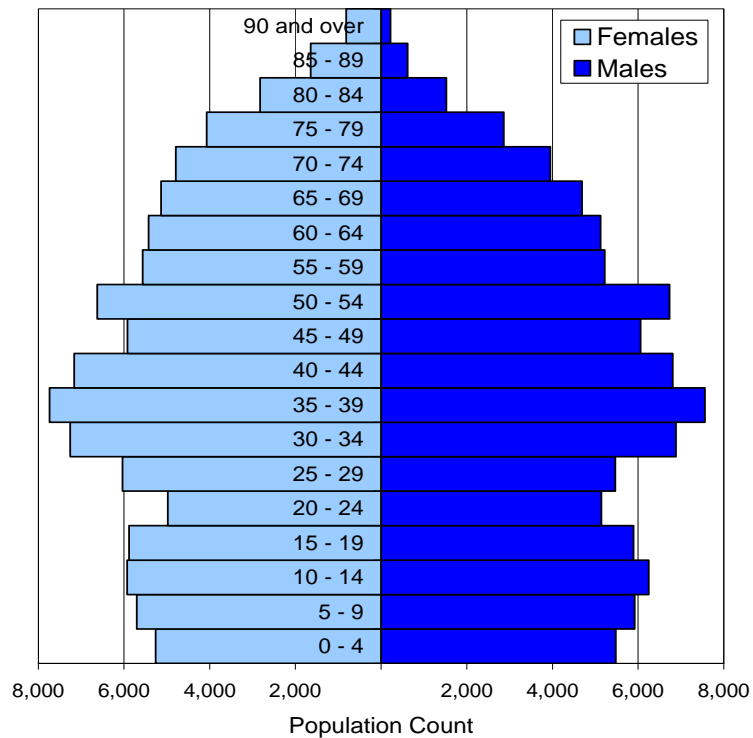
Population at Census Day 2001

Population at Census Day (29th April 2001)

	All people	Males	Females	Living in households	Students away from home
Gateshead	191,151	92,408	98,743	188,703	934
North East	2,515,442	1,218,579	1,296,863	2,472,884	17,862
England	49,138,831	23,922,144	25,216,687	48,248,150	486,829
England & Wales	52,041,916	25,325,926	26,715,990	51,107,639	515,144

Source: Census 2001 Neighbourhood Statistics (<http://neighbourhood.statistics.gov.uk/>), Office of National Statistics

Population Profile by Age & Sex



Source: National Statistics Online, Census 2001 Population Estimates (http://www.statistics.gov.uk/census2001/population_data.asp)

Resident Population Electoral Wards in Gateshead, Census 2001

Ward	Persons	Males	Females
Bede	7,122	3,669	3,453
Bensham	7,487	3,749	3,738
Birtley	8,021	3,895	4,126
Blaydon	8,758	4,189	4,569
Chopwell and Rowlands Gill	9,325	4,505	4,820
Chowdene	8,324	3,974	4,350
Crawcrook and Greenside	9,331	4,480	4,851
Deckham	7,884	3,783	4,101
Dunston	9,633	4,704	4,929
Felling	7,299	3,489	3,810
High Fell	8,034	3,782	4,252
Lamesley	7,812	3,712	4,100
Leam	9,925	4,760	5,165
Low Fell	9,496	4,561	4,935
Pelaw and Heworth	8,026	3,782	4,244
Ryton	9,219	4,411	4,808
Saltwell	8,141	4,006	4,135
Teams	9,241	4,495	4,746
Whickham North	9,976	4,850	5,126
Whickham South	10,312	4,993	5,319
Winlaton	7,545	3,640	3,905
Wrekendyke	10,240	4,979	5,261

Source: Census 2001 Neighbourhood Statistics (<http://neighbourhood.statistics.gov.uk/>), Office of National Statistics

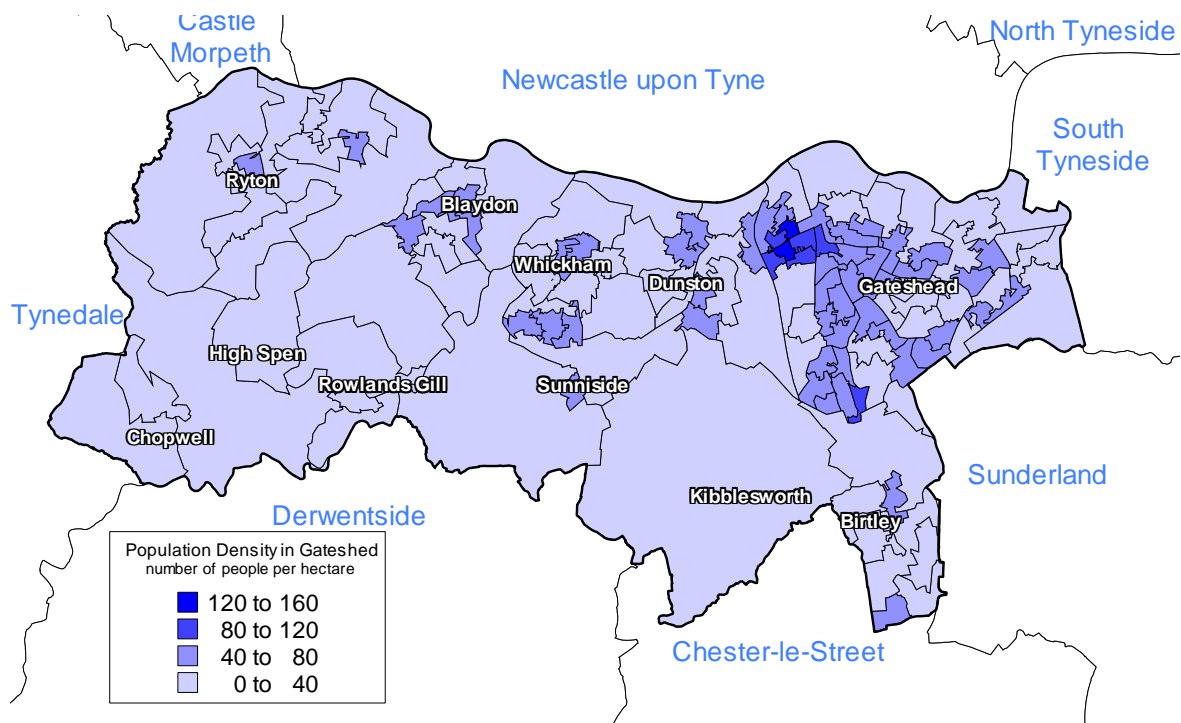
Population Density

Population Density

	Area (hectares)	Population Density (number of people per hectare)
Gateshead	14,235	13.43
North East	857,309	2.93
England	13,027,872	3.77
England & Wales	15,102,075	3.45

Source: Census 2001 Neighbourhood Statistics (<http://neighbourhood.statistics.gov.uk/>), Office of National Statistics

Population Density in Gateshead Number of People per Hectare



Source: Census 2001 Neighbourhood Statistics (<http://neighbourhood.statistics.gov.uk/>), Office of National Statistics

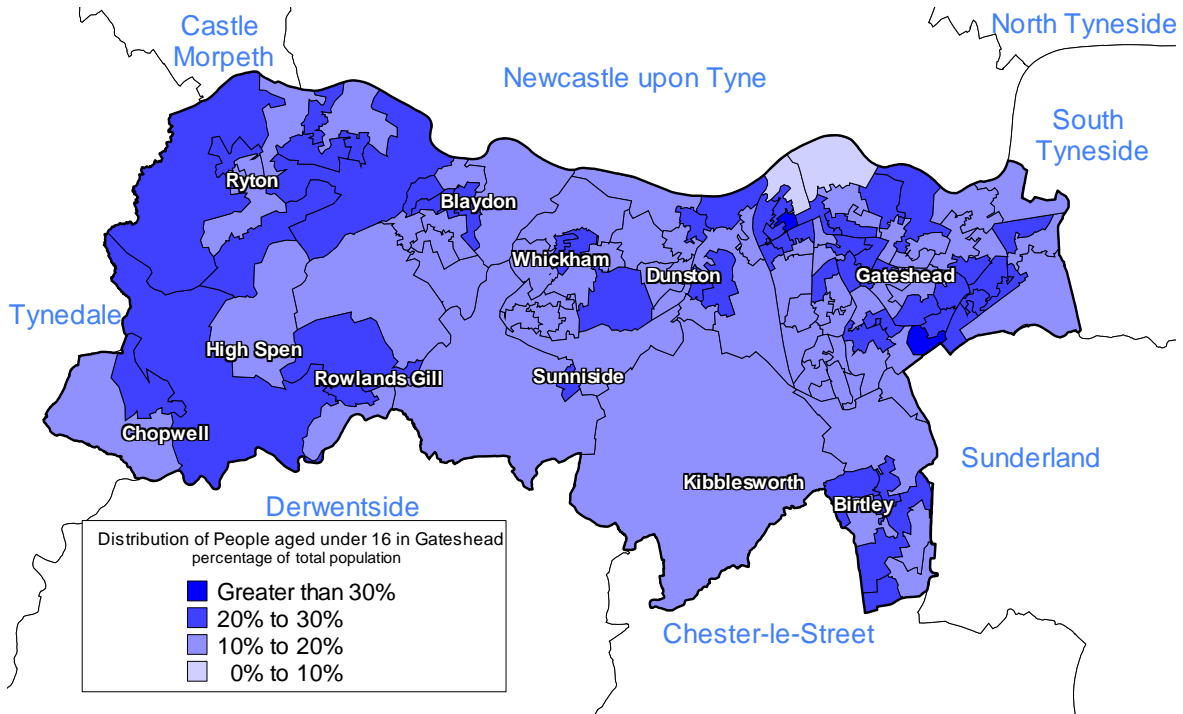
Age Distribution

Age Distribution

	ALL PEOPLE	Under 16		65 and over		75 and over		85 and over	
		Count	Percentage	Count	Percentage	Count	Percentage	Count	Percentage
Gateshead	191,151	36,937	19.3%	33,144	17.3%	14,573	7.6%	3,295	1.7%
Newcastle upon Tyne	259,536	48,697	18.8%	41,370	15.9%	19,681	7.6%	4,884	1.9%
North Tyneside	191,659	36,779	19.2%	34,284	17.9%	15,908	8.3%	3,682	1.9%
South Tyneside	152,785	31,049	20.3%	27,246	17.8%	12,428	8.1%	2,547	1.7%
Sunderland	280,807	56,213	20.0%	43,776	15.6%	18,366	6.5%	4,063	1.4%
North East	2,515,442	497,321	19.8%	416,312	16.6%	186,767	7.4%	42,742	1.7%
England	49,138,831	9,901,581	20.2%	7,808,000	15.9%	3,705,159	7.5%	954,024	1.9%
England & Wales	52,041,916	10,488,736	20.2%	8,312,774	16.0%	3,945,742	7.6%	1,012,405	1.9%

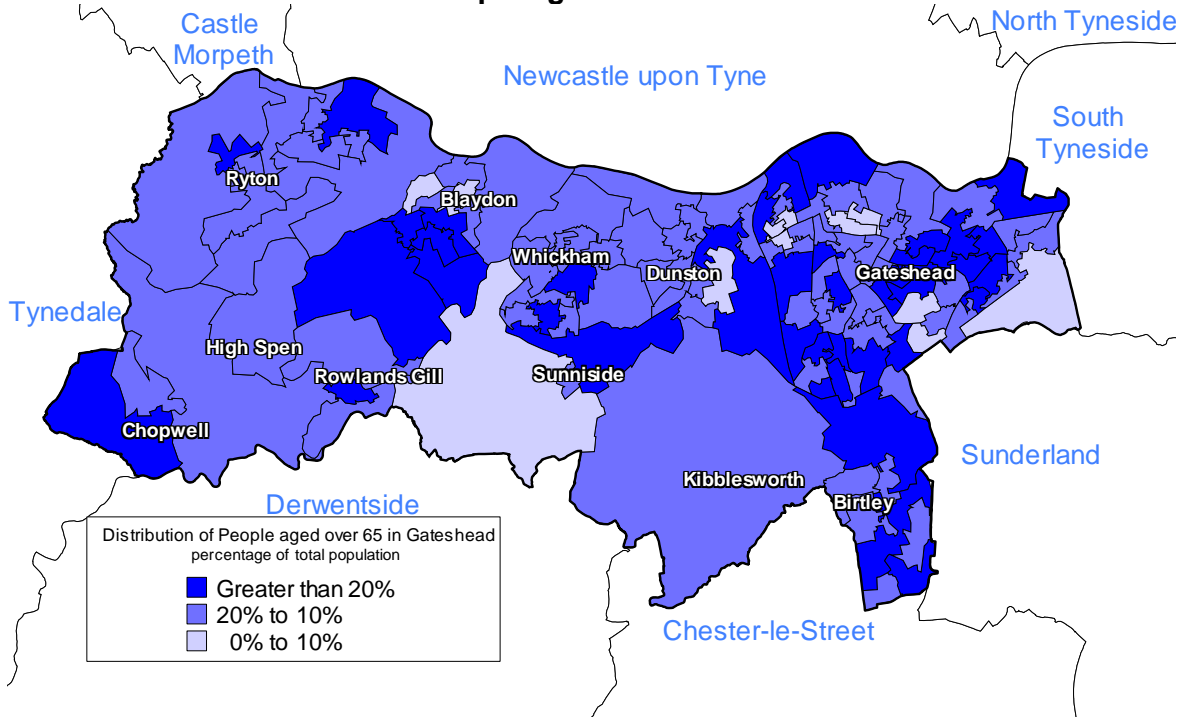
Source: Census 2001 Neighbourhood Statistics (<http://neighbourhood.statistics.gov.uk/>), Office of National Statistics

Distribution of People aged under 16 in Gateshead

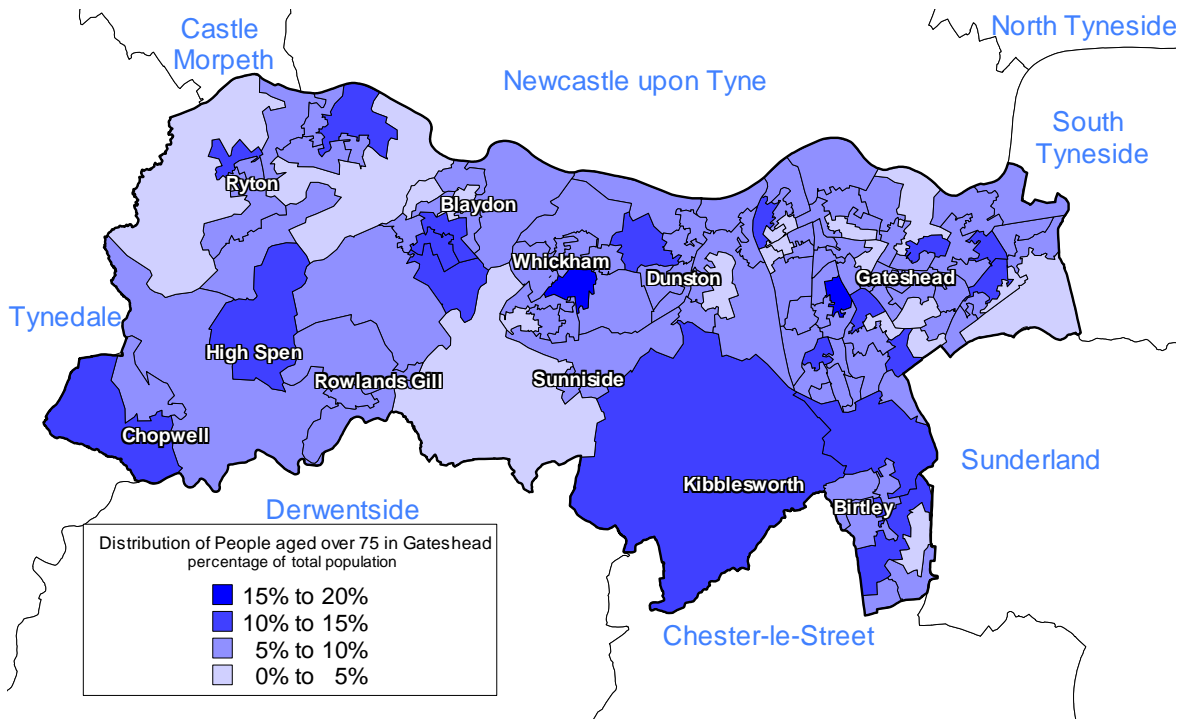


Source: Census 2001 Neighbourhood Statistics (<http://neighbourhood.statistics.gov.uk/>), Office of National Statistics

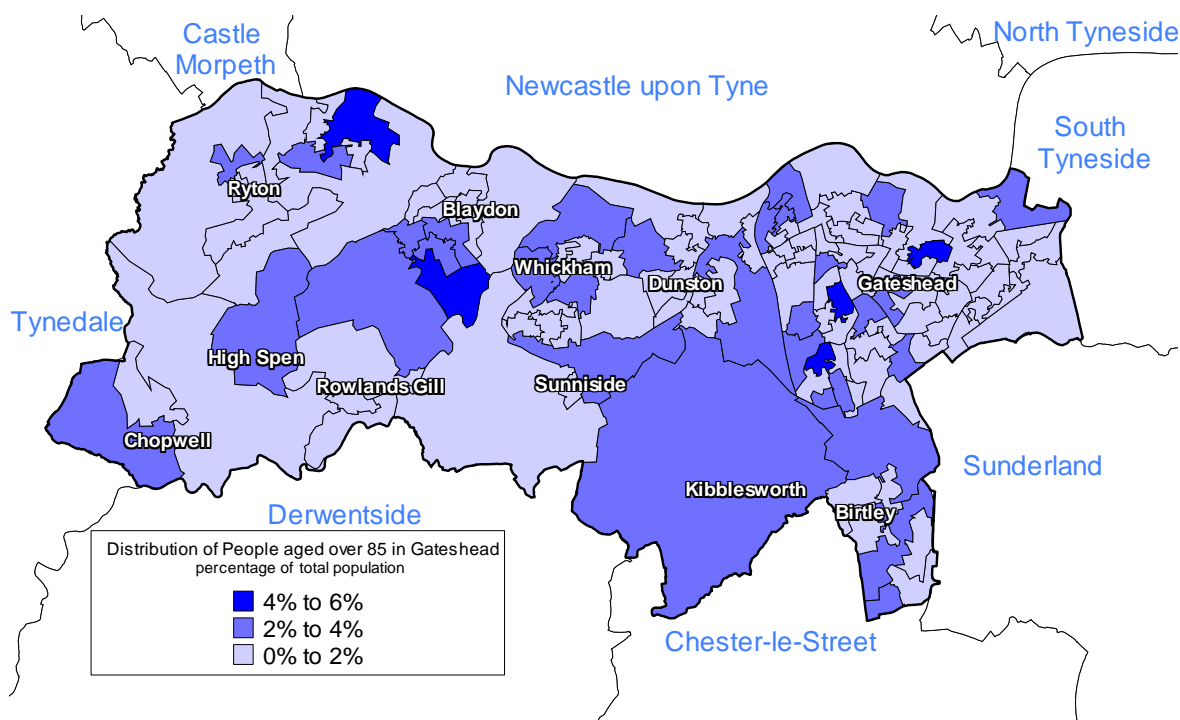
Distribution of People aged 65 and over in Gateshead



Distribution of People aged 75 and over in Gateshead



Distribution of People aged 85 and over in Gateshead



Source: Census 2001 Neighbourhood Statistics (<http://neighbourhood.statistics.gov.uk/>), Office of National Statistics

Age Distribution in Gateshead by Ward

Ward	Under 16	65 and over	75 and over	85 and over	All People
Bede	1319	990	428	92	7122
Bensham	1712	1097	528	152	7485
Birtley	1538	1425	651	138	8021
Blaydon	1868	1195	506	89	8758
Chopwell and Rowlands Gill	1899	1776	764	133	9323
Chowdene	1431	1713	752	212	8325
Crawcrook and Greenside	1826	1454	708	165	9331
Deckham	1677	1152	503	118	7884
Dunston	1887	1561	676	139	9634
Felling	1377	1379	605	166	7299
High Fell	1693	1527	708	164	8032
Lamesley	1407	1442	671	131	7812
Leam	2236	1619	652	127	9924
Low Fell	1672	1761	851	247	9498
Pelaw and Heworth	1459	1709	722	146	8025
Ryton	1784	1668	727	166	9218
Saltwell	1663	1114	484	113	8142
Teams	1738	1515	675	136	9241
Whickham North	1786	1923	892	210	9975
Whickham South	1700	1638	634	130	10313
Winlaton	1170	1775	793	229	7545
Wrekendyke	2095	1709	641	90	10242

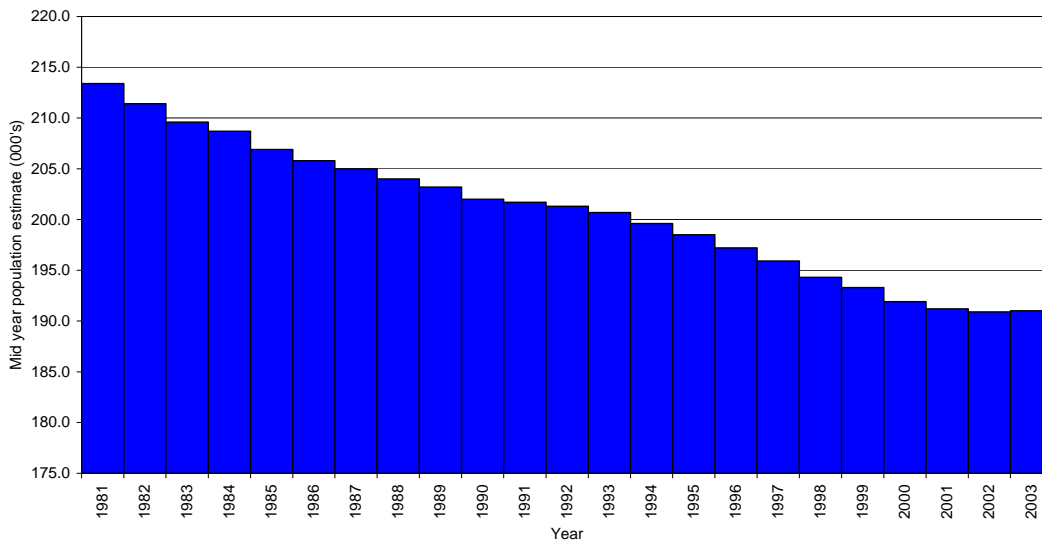
Source: Census 2001 Neighbourhood Statistics (<http://neighbourhood.statistics.gov.uk/>), Office of National Statistics

Mid Year Population Estimates

Year	Total Population Gateshead (000's)	Percentage of Population in each age group				
		0-14	15-59	60+	75+	85+
1981	213.4	19.9%	59.8%	20.3%	5.4%	0.8%
1982	211.4	19.5%	59.7%	20.7%	5.6%	0.9%
1983	209.6	19.3%	59.7%	21.0%	5.7%	0.9%
1984	208.7	18.9%	59.8%	21.3%	5.9%	1.0%
1985	206.9	18.7%	59.9%	21.5%	6.0%	1.0%
1986	205.8	18.5%	59.8%	21.7%	6.2%	1.1%
1987	205.0	18.3%	59.9%	21.8%	6.3%	1.2%
1988	204.0	18.2%	59.9%	21.9%	6.4%	1.2%
1989	203.2	18.2%	59.8%	21.9%	6.5%	1.2%
1990	202.0	18.1%	59.8%	22.0%	6.6%	1.3%
1991	201.7	18.0%	59.8%	22.2%	6.7%	1.3%
1992	201.3	18.3%	59.6%	22.2%	6.7%	1.3%
1993	200.7	18.5%	59.2%	22.2%	6.6%	1.4%
1994	199.6	18.6%	59.3%	22.2%	6.6%	1.5%
1995	198.5	18.5%	59.3%	22.3%	6.9%	1.5%
1996	197.2	18.5%	59.2%	22.3%	7.0%	1.5%
1997	195.9	18.5%	59.1%	22.4%	7.1%	1.6%
1998	194.3	18.4%	59.0%	22.6%	7.3%	1.6%
1999	193.3	18.4%	59.0%	22.7%	7.3%	1.6%
2000	191.9	18.1%	59.1%	22.8%	7.6%	1.7%
2001	191.2	18.0%	59.1%	22.9%	7.6%	1.7%
2002	190.9	17.8%	59.4%	22.8%	7.8%	1.7%
2003	191.0	17.5%	59.6%	22.8%	7.8%	1.7%

Source: Mid Year Population Estimates, Office of National Statistics

Mid Year Population Estimates (Total Gateshead population)



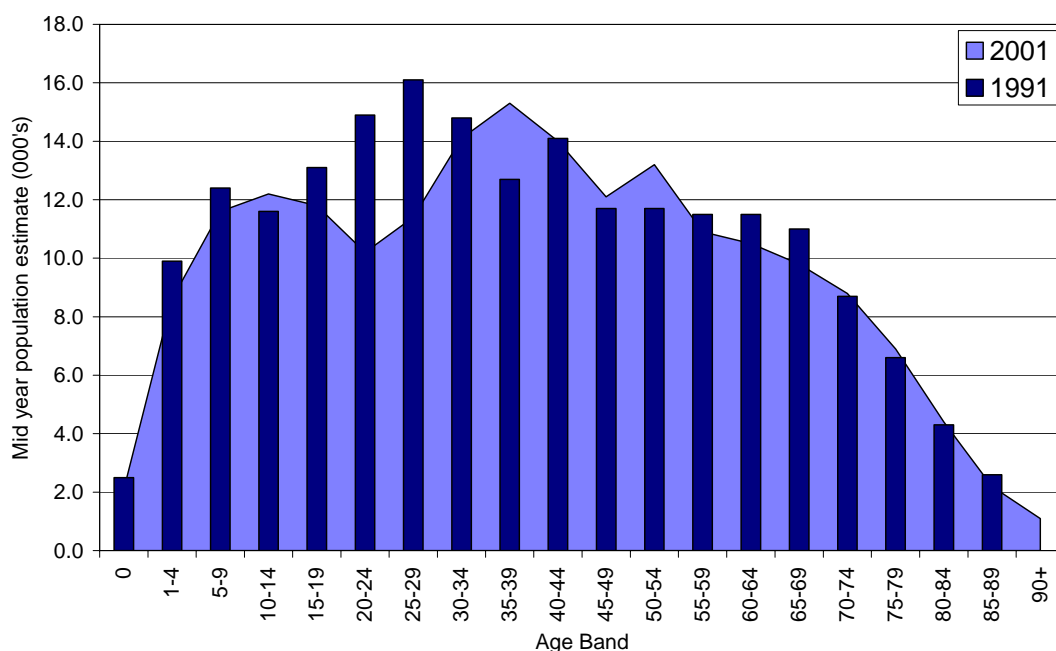
Source: Mid Year Population Estimates, Office of National Statistics

Resident Population Estimates for Gateshead, mid-2003

Age Group	Males		Females		Persons		
	Count	Percentage	Count	Percentage	Count	Percentage	Cumulative %
Under 1	1,000	1.1%	1,000	1.0%	2,000	1.0%	1.0%
1 - 4	4,300	4.6%	4,000	4.1%	8,300	4.4%	5.4%
5 - 9	5,700	6.1%	5,500	5.6%	11,200	5.9%	11.3%
10 - 14	6,100	6.6%	5,900	6.0%	12,000	6.3%	17.6%
15 - 19	6,400	6.9%	5,900	6.0%	12,300	6.4%	24.0%
20 - 24	5,500	5.9%	5,400	5.5%	10,900	5.7%	29.7%
25 - 29	5,100	5.5%	5,400	5.5%	10,500	5.5%	35.2%
30 - 34	6,500	7.0%	6,900	7.0%	13,400	7.0%	42.2%
35 - 39	7,300	7.9%	7,700	7.8%	15,000	7.9%	50.1%
40 - 44	7,100	7.7%	7,300	7.4%	14,400	7.5%	57.7%
45 - 49	6,400	6.9%	6,400	6.5%	12,800	6.7%	64.4%
50 - 54	6,000	6.5%	6,000	6.1%	12,000	6.3%	70.6%
55 - 59	6,200	6.7%	6,300	6.4%	12,500	6.6%	77.2%
60 - 64	4,900	5.3%	5,200	5.3%	10,000	5.2%	82.4%
65 - 69	4,600	5.0%	5,200	5.3%	9,800	5.1%	87.6%
70 - 74	4,000	4.3%	4,800	4.9%	8,800	4.6%	92.2%
75 - 79	2,900	3.1%	4,000	4.1%	6,900	3.6%	95.8%
80 - 84	1,800	1.9%	3,000	3.0%	4,800	2.5%	98.3%
85 - 89	600	0.6%	1,600	1.6%	2,100	1.1%	99.4%
90 +	300	0.3%	900	0.9%	1,100	0.6%	100.0%
All Ages	92,700	100.0%	98,400	100.0%	190,800	100.0%	

Source: Resident Population Estimates, mid-2003, ONS

Distribution of the Gateshead Population by Age Mid 1991 and Mid 2001 compared



Source: Mid Year Population Estimates, Office of National Statistics

Population Change

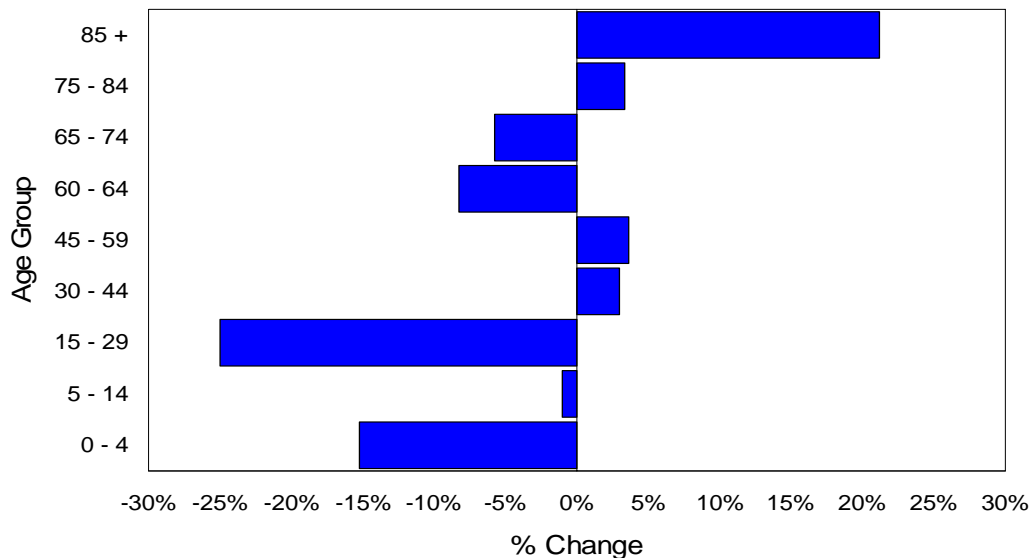
Change in Total Population, 1981 - 2001

Area	Mid - 1981	Mid - 1991	2001 Census	% Change	
				1981 - 2001	1991 - 2001
Gateshead	213,246	203,078	191,151	-10.4%	-5.9%
Tyne & Wear	1,155,200	1,130,400	1,075,938	-6.9%	-4.8%
North East	2,636,200	2,602,500	2,515,442	-4.6%	-3.3%
England & Wales	49,634,300	51,099,521	52,041,916	4.9%	1.8%

Change in size of selected age groups (mid 1981 – 2001 Census), Gateshead

Year	All ages	0 - 4	5 - 14	15 - 29	30 - 44	45 - 59	60 - 64	65 - 74	75 - 84	85 +
Mid 1981	213,246	12,348	30,002	47,495	40,508	39,427	12,046	19,855	9,729	1,836
Mid 1991	203,078	12,678	24,039	44,502	42,137	34,851	11,535	19,701	10,918	2,717
2001 Census	191,151	10,743	23,795	33,389	43,401	36,101	10,577	18,567	11,286	3,292
% change 1991 to 2001	-5.9%	-15.3%	-1.0%	-25.0%	3.0%	3.6%	-8.3%	-5.8%	3.4%	21.2%

Percentage change in the population of Gateshead between 1991 and 2001



**Population Turnover Rates in Gateshead Wards, mid-2000 to mid-2001
(Rate per 1,000 population)**

Ward	Inflow					
	All ages	1 to 14	15 to 24	25 to 44	45 to 64	65 and over
Bede	108	124	202	120	64	44
Bensham	126	104	225	142	80	57
Birtley	51	75	75	67	26	23
Blaydon	50	62	70	71	21	15
Chopwell / Rowlands Gill	55	71	86	77	33	22
Chowdene	57	74	87	90	24	33
Crawcrook and Greenside	53	49	75	74	29	42
Deckham	83	77	129	105	48	55
Dunston	45	51	79	64	19	15
Felling	68	68	114	91	38	46
High Fell	88	115	135	122	45	36
Lamesley	65	72	113	91	39	35
Leam	65	85	98	78	39	28
Low Fell	61	47	100	96	28	37
Pelaw and Heworth	65	91	118	93	32	17
Ryton	52	62	89	79	27	21
Saltwell	113	122	222	136	58	18
Teams	77	68	140	108	49	18
Whickham North	56	73	72	83	34	28
Whickham South	41	53	63	66	21	18
Winlaton	51	68	75	80	32	24
Wrekendyke	59	77	85	86	26	16

Ward	Outflow					
	All ages	1 to 14	15 to 24	25 to 44	45 to 64	65 and over
Bede	125	163	181	165	59	46
Bensham	109	112	150	154	50	47
Birtley	59	73	95	90	22	27
Blaydon	72	81	104	89	45	39
Chopwell / Rowlands Gill	47	56	76	77	20	18
Chowdene	56	48	94	79	35	41
Crawcrook and Greenside	50	54	79	71	28	22
Deckham	97	108	154	129	48	39
Dunston	53	66	76	66	31	31
Felling	79	102	107	123	35	33
High Fell	70	76	128	87	49	33
Lamesley	68	85	127	101	34	23
Leam	74	80	114	103	36	40
Low Fell	58	58	106	81	34	26
Pelaw and Heworth	62	75	116	94	25	25
Ryton	46	47	77	72	24	22
Saltwell	140	163	217	171	82	43
Teams	82	105	132	107	38	34
Whickham North	53	59	85	86	29	18
Whickham South	49	55	90	81	22	19
Winlaton	45	59	86	77	20	19
Wrekendyke	58	69	89	71	28	38

Population Projections

Split by sex for Gateshead (000's)

Males

	0-14	15-29	30-44	45-59	60-74	75+
2005	16.8	17.5	19.9	18.9	13.5	5.8
2010	15.7	18.2	17.7	19.1	14.5	6.5
2015	15.2	18.0	16.7	19.7	14.7	7.2
2020	14.8	17.0	17.0	18.5	15.6	7.5
2025	14.6	16.1	17.9	16.5	16.1	8.8

Females

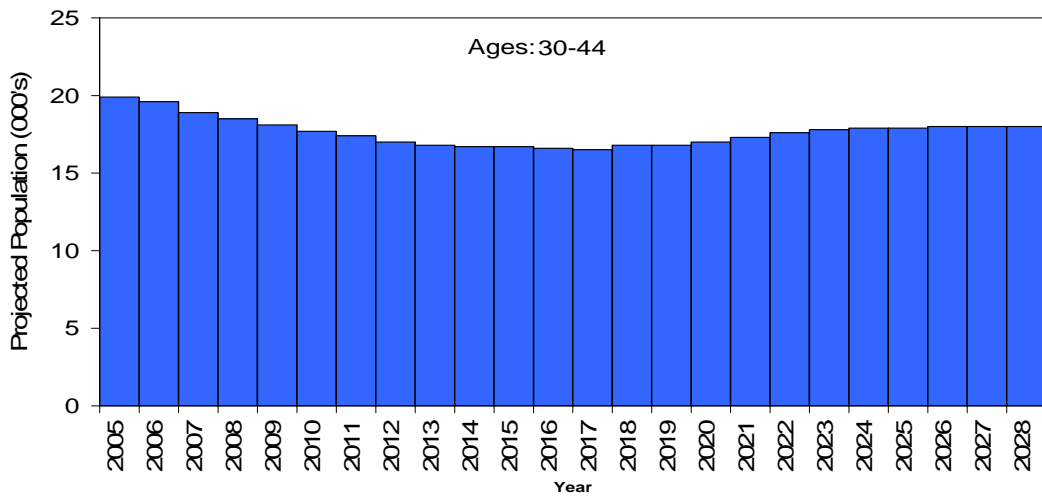
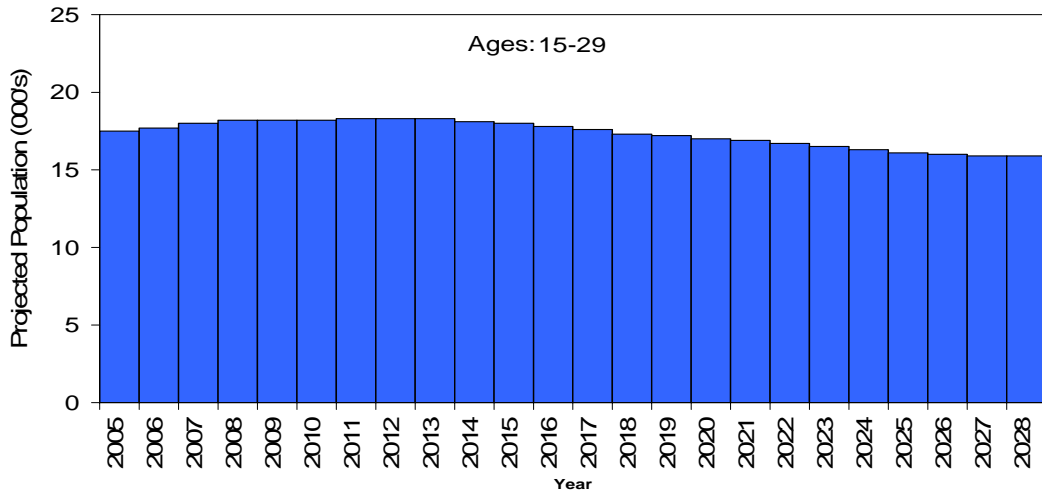
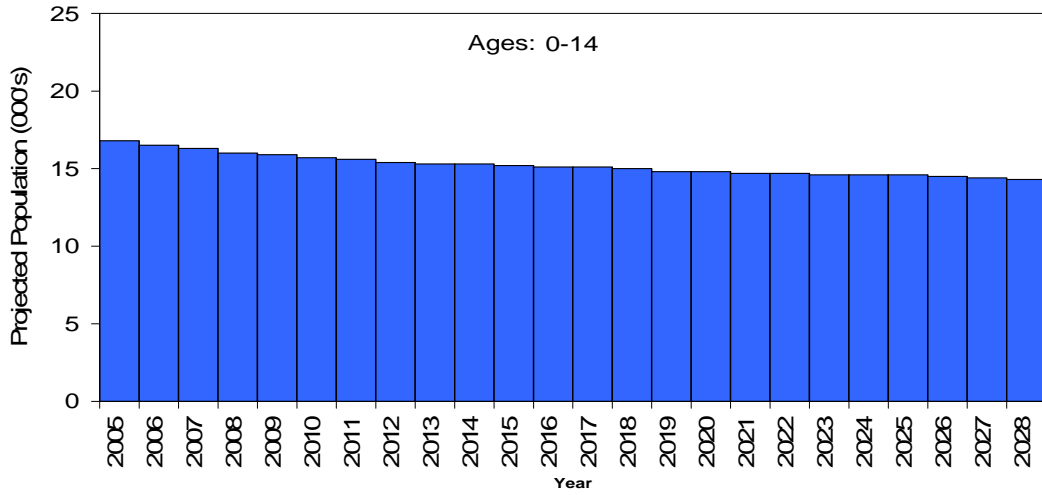
	0-14	15-29	30-44	45-59	60-74	75+
2005	15.9	16.8	21.3	19.1	15.2	9.4
2010	14.6	17.1	18.7	19.8	16.0	9.5
2015	14.0	16.5	17.2	20.8	16.2	9.9
2020	13.7	15.5	17.0	19.9	17.2	10.4
2025	13.6	14.5	17.6	17.6	18.1	11.7

Persons

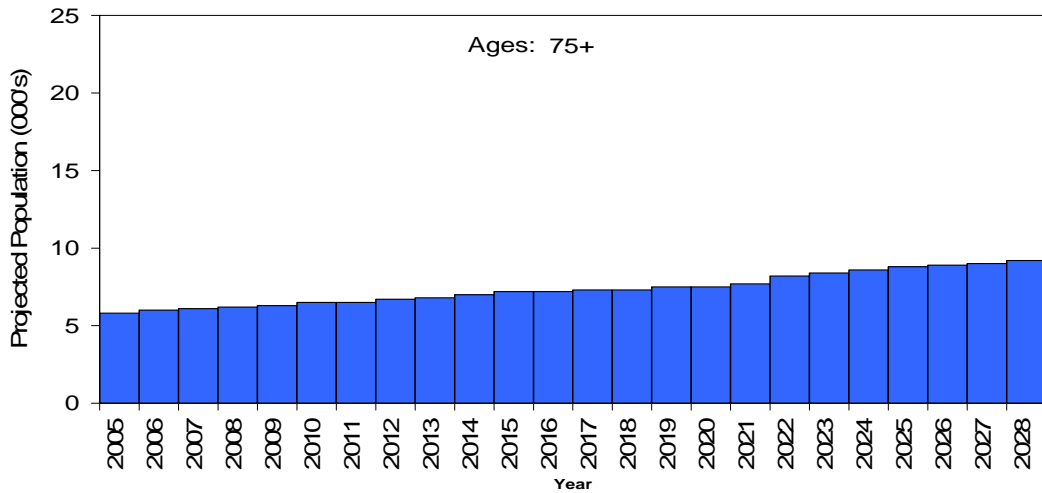
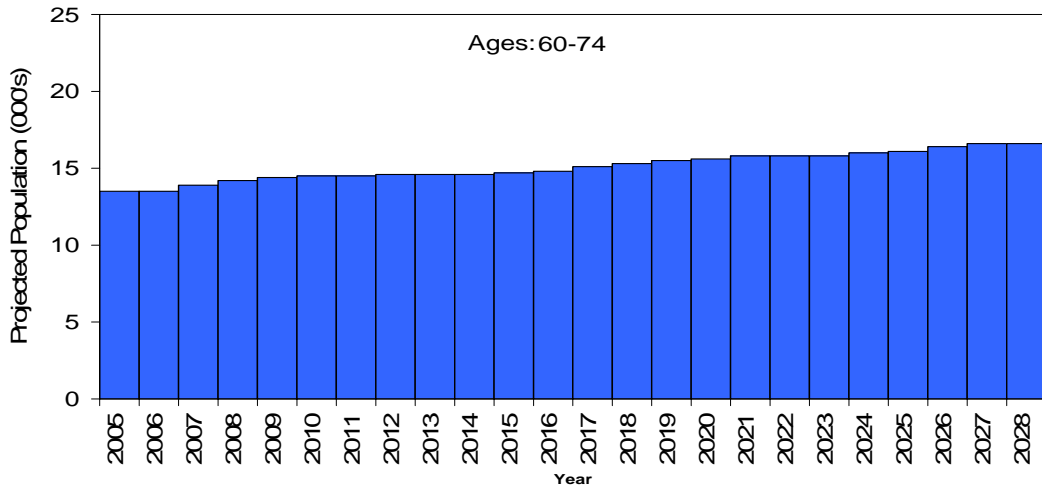
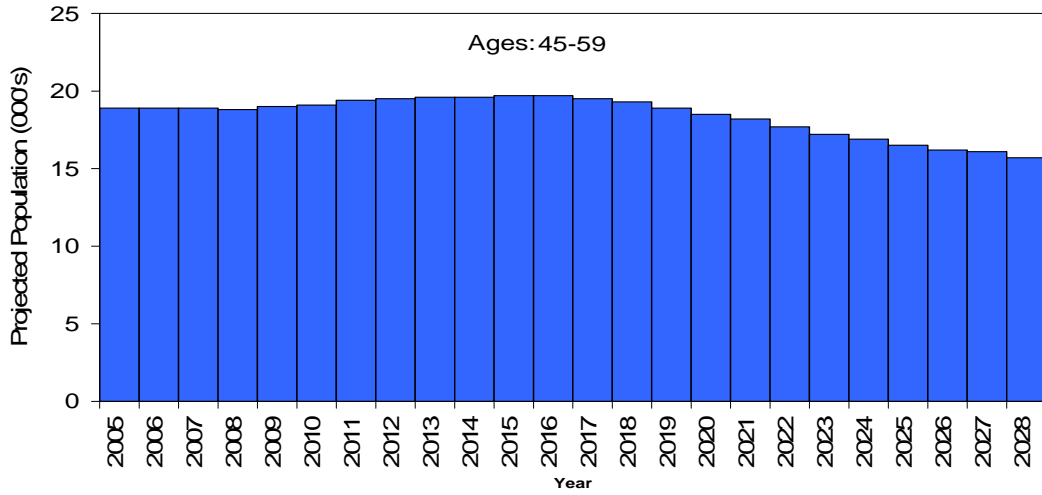
	0-14	15-29	30-44	45-59	60-74	75+
2005	32.6	34.3	41.2	38.0	28.6	15.1
2010	30.5	35.4	36.5	38.9	30.5	15.9
2015	29.2	34.6	33.7	40.4	30.8	17.1
2020	28.6	32.6	34.1	38.5	33.0	18.0
2025	28.2	30.8	35.4	34.2	34.2	20.5

Source: Census 2001 Neighbourhood Statistics (<http://neighbourhood.statistics.gov.uk/>), Office of National Statistics

Population Projections Males

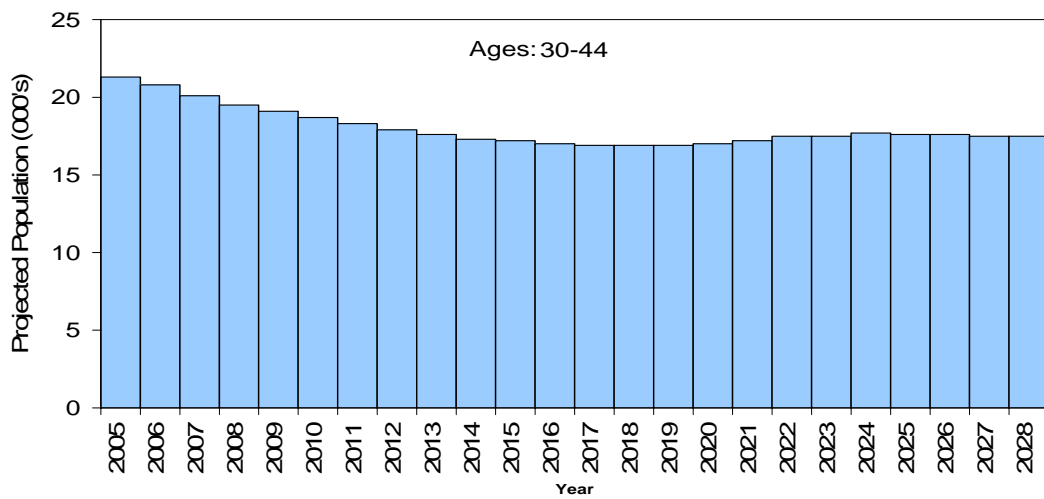
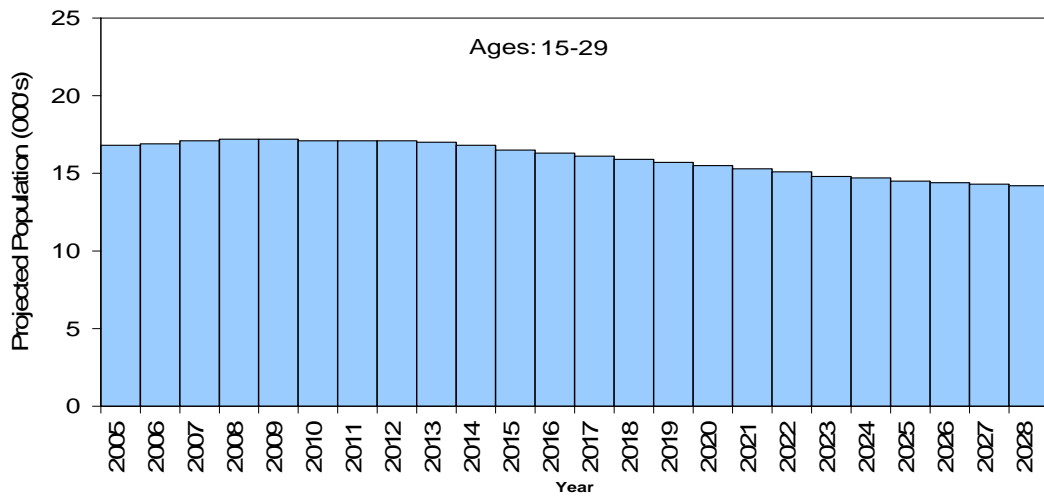
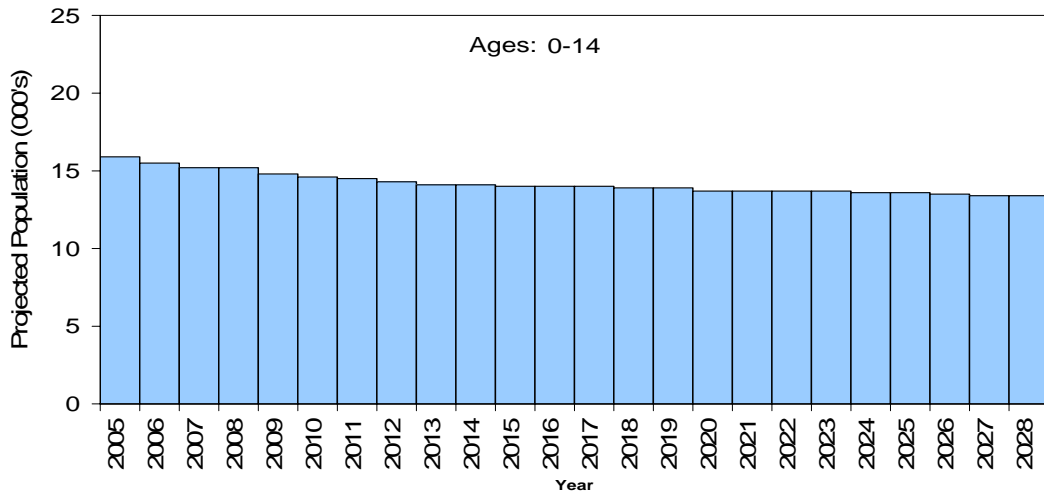


Population Projections Males (continued)

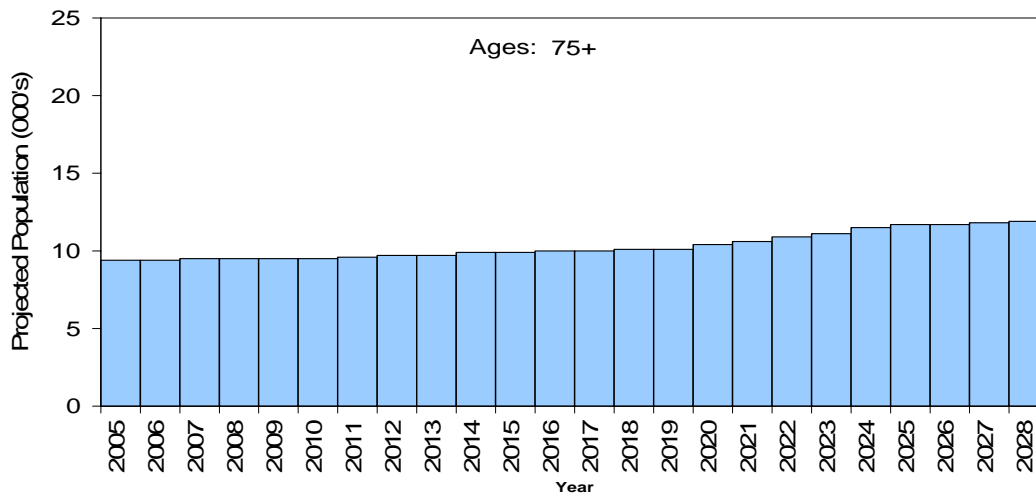
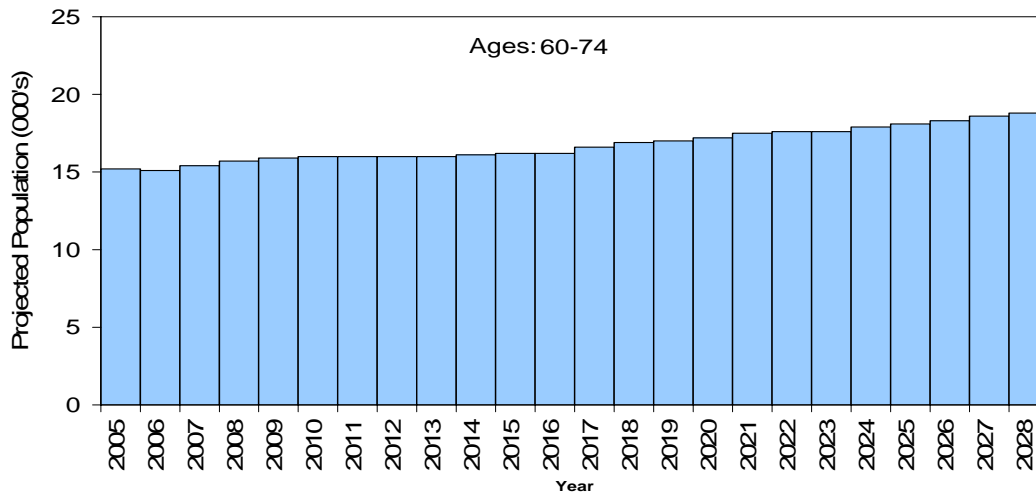
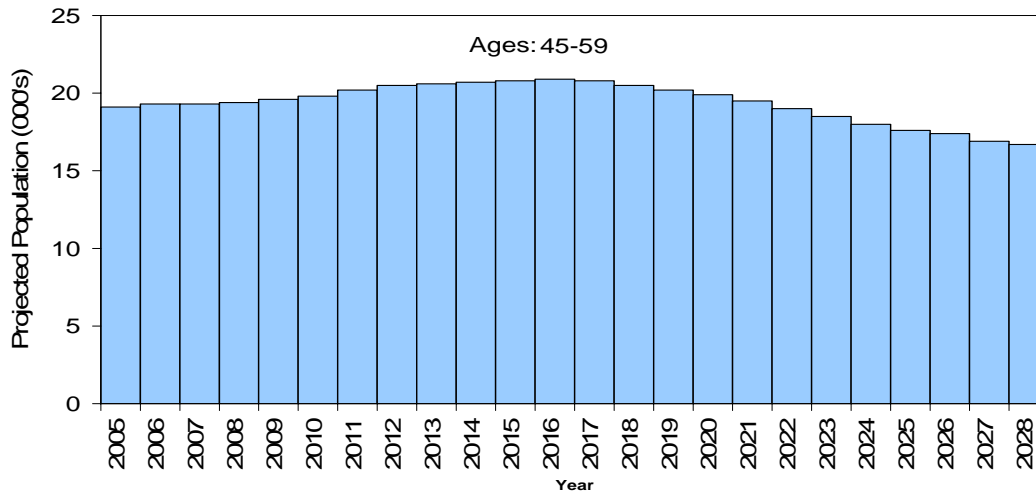


Source: Census 2001 Neighbourhood Statistics (<http://neighbourhood.statistics.gov.uk/>), Office of National Statistics

Population Projections Females

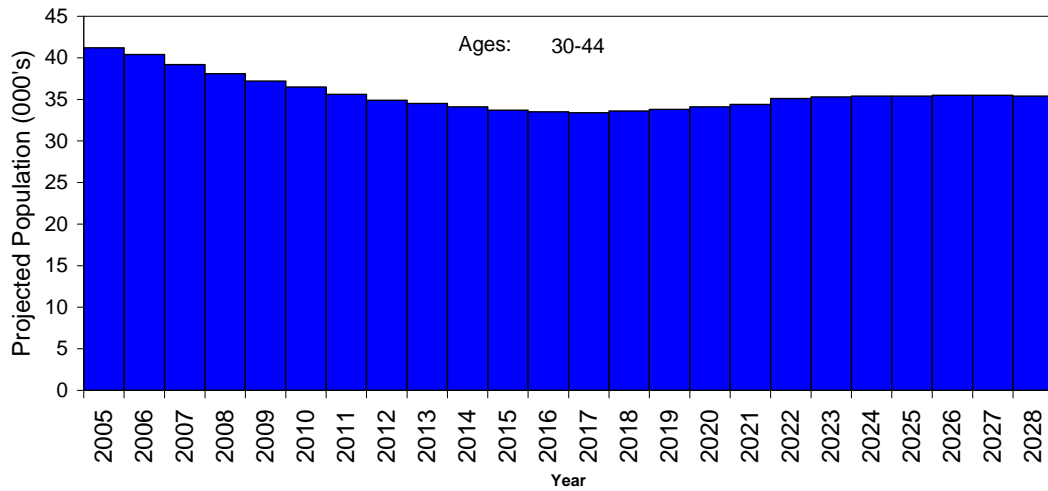
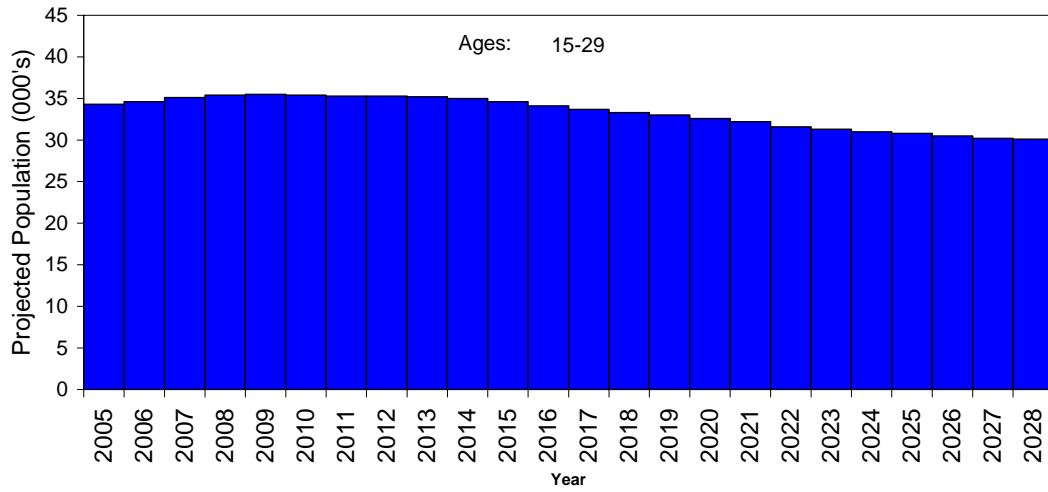
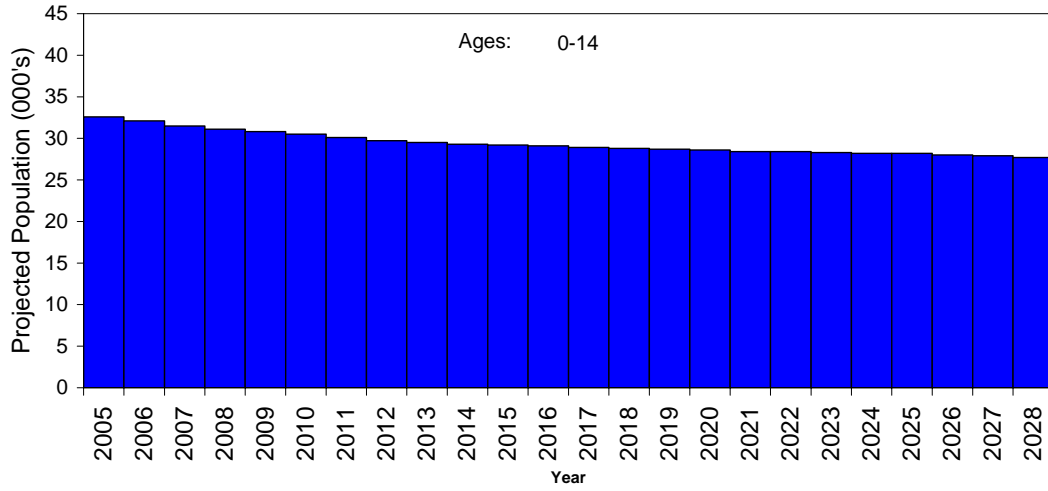


Population Projections Females (continued)

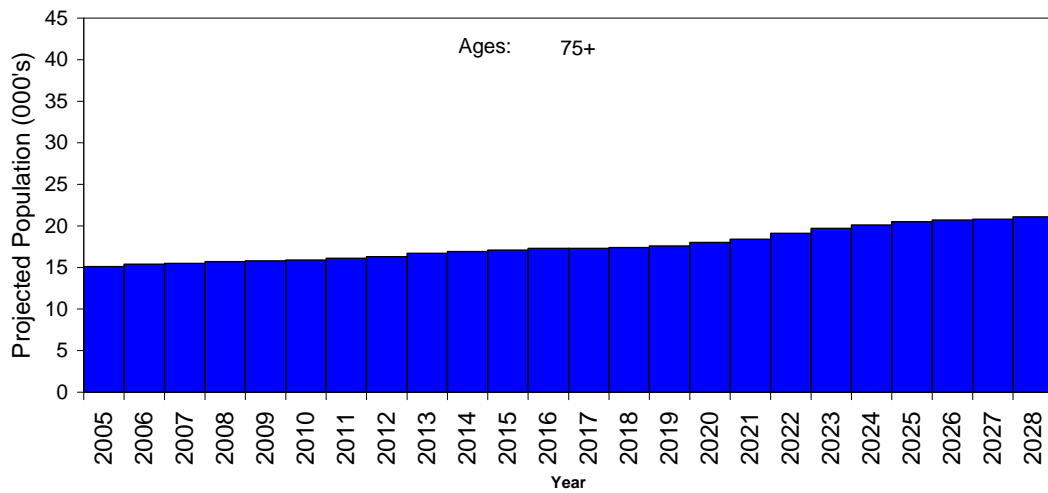
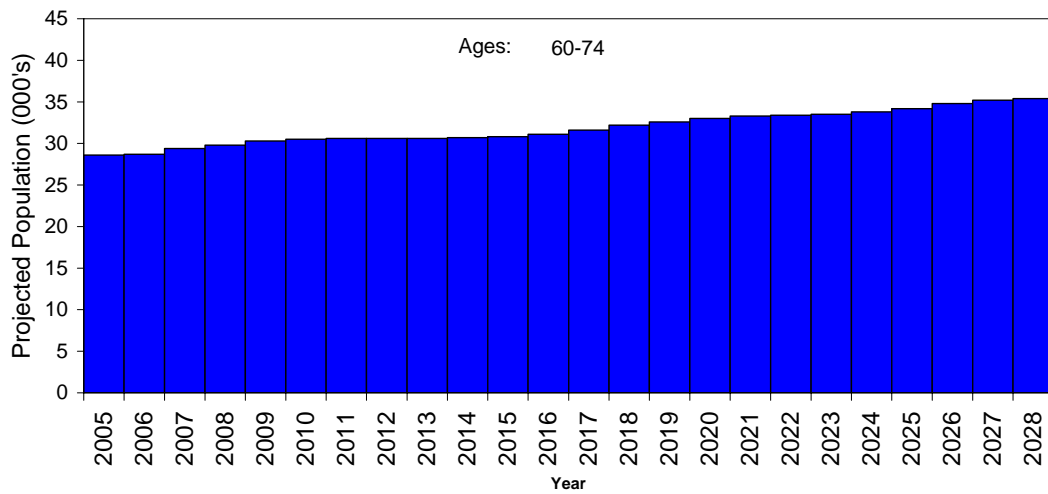
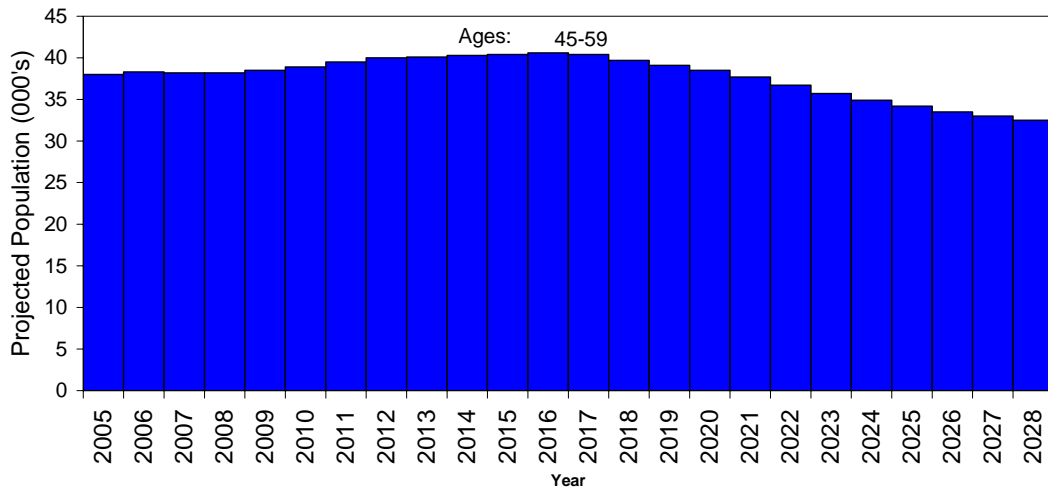


Source: Census 2001 Neighbourhood Statistics (<http://neighbourhood.statistics.gov.uk/>), Office of National Statistics

Population Projections Persons



Population Projections Persons (continued)



Health of Population

Self Classification of Health in Last 12 Months Census 2001

Ward	Good health		Fairly good health		Not good health		All People
	Count	Percentage	Count	Percentage	Count	Percentage	
Bede	4,075	57.2%	1,854	26.0%	1,193	16.8%	7,122
Bensham	4,870	65.0%	1,635	21.8%	982	13.1%	7,487
Birtley	5,115	63.8%	1,884	23.5%	1,022	12.7%	8,021
Blaydon	5,597	63.9%	2,113	24.1%	1,048	12.0%	8,758
Chopwell and Rowlands Gill	5,758	61.7%	2,341	25.1%	1,226	13.1%	9,325
Chowdene	5,093	61.2%	2,131	25.6%	1,100	13.2%	8,324
Crawcrook and Greenside	6,046	64.8%	2,292	24.6%	993	10.6%	9,331
Deckham	4,864	61.7%	1,889	24.0%	1,131	14.3%	7,884
Dunston	6,076	63.1%	2,341	24.3%	1,216	12.6%	9,633
Felling	4,087	56.0%	1,972	27.0%	1,240	17.0%	7,299
High Fell	4,553	56.7%	2,052	25.5%	1,429	17.8%	8,034
Lamesley	4,618	59.1%	2,025	25.9%	1,169	15.0%	7,812
Leam	6,128	61.7%	2,444	24.6%	1,353	13.6%	9,925
Low Fell	6,536	68.8%	2,070	21.8%	890	9.4%	9,496
Pelaw and Heworth	4,856	60.5%	2,081	25.9%	1,089	13.6%	8,026
Ryton	6,032	65.4%	2,213	24.0%	974	10.6%	9,219
Saltwell	5,136	63.1%	1,972	24.2%	1,033	12.7%	8,141
Teams	5,511	59.6%	2,330	25.2%	1,400	15.1%	9,241
Whickham North	6,432	64.5%	2,378	23.8%	1,166	11.7%	9,976
Whickham South	7,147	69.3%	2,254	21.9%	911	8.8%	10,312
Winlaton	4,610	61.1%	1,896	25.1%	1,039	13.8%	7,545
Wrekendyke	6,480	63.3%	2,464	24.1%	1,296	12.7%	10,240

Source: Census 2001 Neighbourhood Statistics (<http://neighbourhood.statistics.gov.uk/>), Office of National Statistics

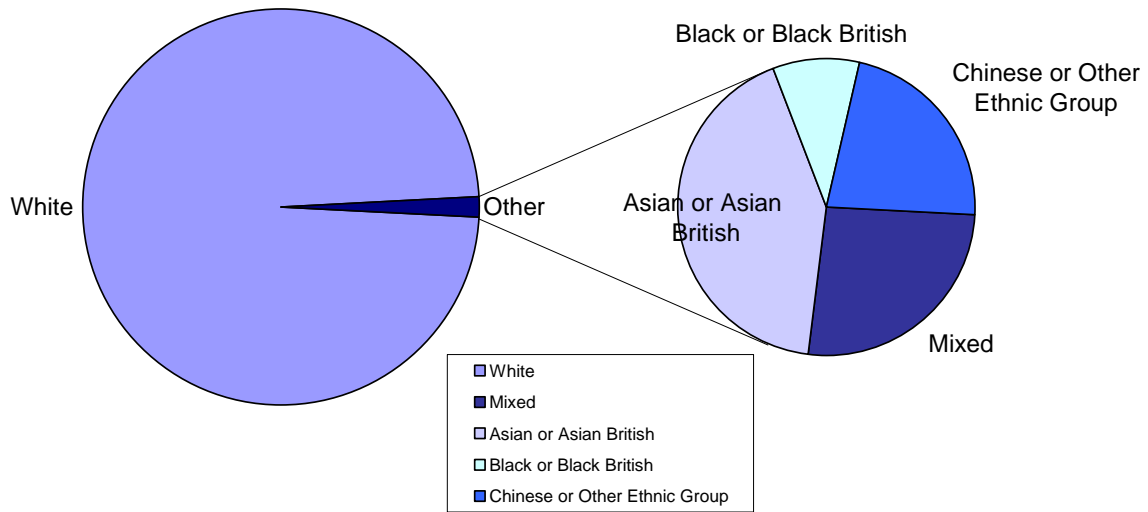
Ethnicity

Ethnicity in Gateshead, Census 2001

Ethnic Group		Count	Percentage
White	British	185,260	96.92%
	Irish	546	0.29%
	Other White	2,292	1.20%
	Total	188,098	98.40%
Mixed	White and Black Caribbean	238	0.12%
	White and Black African	85	0.04%
	White and Asian	284	0.15%
	Other Mixed	191	0.10%
	Total	798	0.42%
Asian or Asian British	Indian	490	0.26%
	Pakistani	491	0.26%
	Bangladeshi	120	0.06%
	Other Asian	188	0.10%
	Total	1,289	0.67%
Black or Black British	Caribbean	50	0.03%
	African	208	0.11%
	Other Black	31	0.02%
	Total	289	0.15%
Chinese or Other Ethnic Group	Chinese	364	0.19%
	Other Ethnic Group	313	0.16%
	Total	677	0.35%
ALL PEOPLE		191,151	

Source: Census 2001 Neighbourhood Statistics (<http://neighbourhood.statistics.gov.uk/>), Office of National Statistics

Gateshead Ethnicity Breakdown



Source: Census 2001 Neighbourhood Statistics (<http://neighbourhood.statistics.gov.uk/>), Office of National Statistics

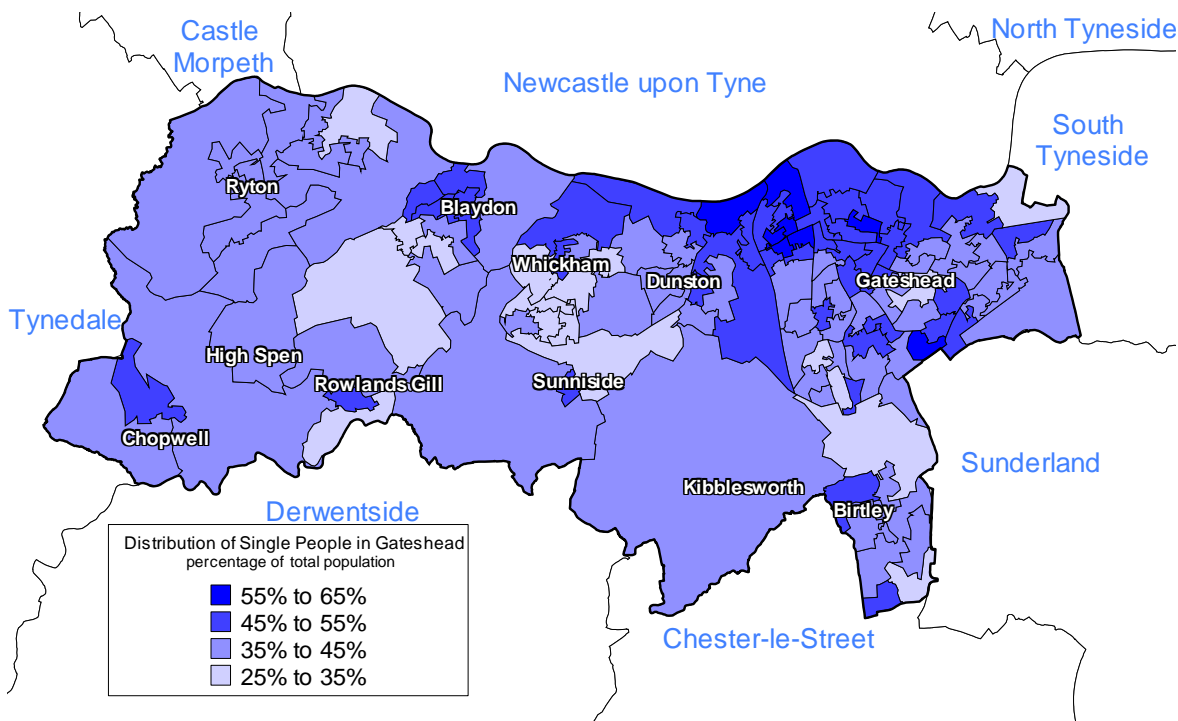
Marital Status

Marital Status

	ALL PEOPLE	Single (never married)		Married (first marriage)		Re-married		Separated (still legally married)		Divorced		Widowed	
		Count	Percentage	Count	Percentage	Count	Percentage	Count	Percentage	Count	Percentage	Count	Percentage
Gateshead	191,151	82,294	43.1%	66,829	35.0%	9,715	5.1%	3,883	2.0%	13,386	7.0%	15,044	7.9%
Newcastle upon Tyne	259,536	129,030	49.7%	78,085	30.1%	10,444	4.0%	5,826	2.2%	17,092	6.6%	19,059	7.3%
North Tyneside	191,659	78,534	41.0%	68,204	35.6%	11,409	6.0%	4,144	2.2%	14,024	7.3%	15,344	8.0%
South Tyneside	152,785	66,276	43.4%	51,879	34.0%	7,727	5.1%	3,304	2.2%	11,037	7.2%	12,562	8.2%
Sunderland	280,807	125,507	44.7%	98,672	35.1%	13,302	4.7%	4,842	1.7%	18,411	6.6%	20,073	7.1%
North East	2,515,442	1,081,999	43.0%	887,236	35.3%	137,904	5.5%	48,960	1.9%	171,451	6.8%	187,892	7.5%
England	49,138,831	21,763,102	44.3%	17,069,491	34.7%	2,885,186	5.9%	941,911	1.9%	3,219,984	6.6%	3,259,157	6.6%
England & Wales	52,041,916	22,999,751	44.2%	18,101,011	34.8%	3,057,652	5.9%	985,731	1.9%	3,420,978	6.6%	3,476,793	6.7%

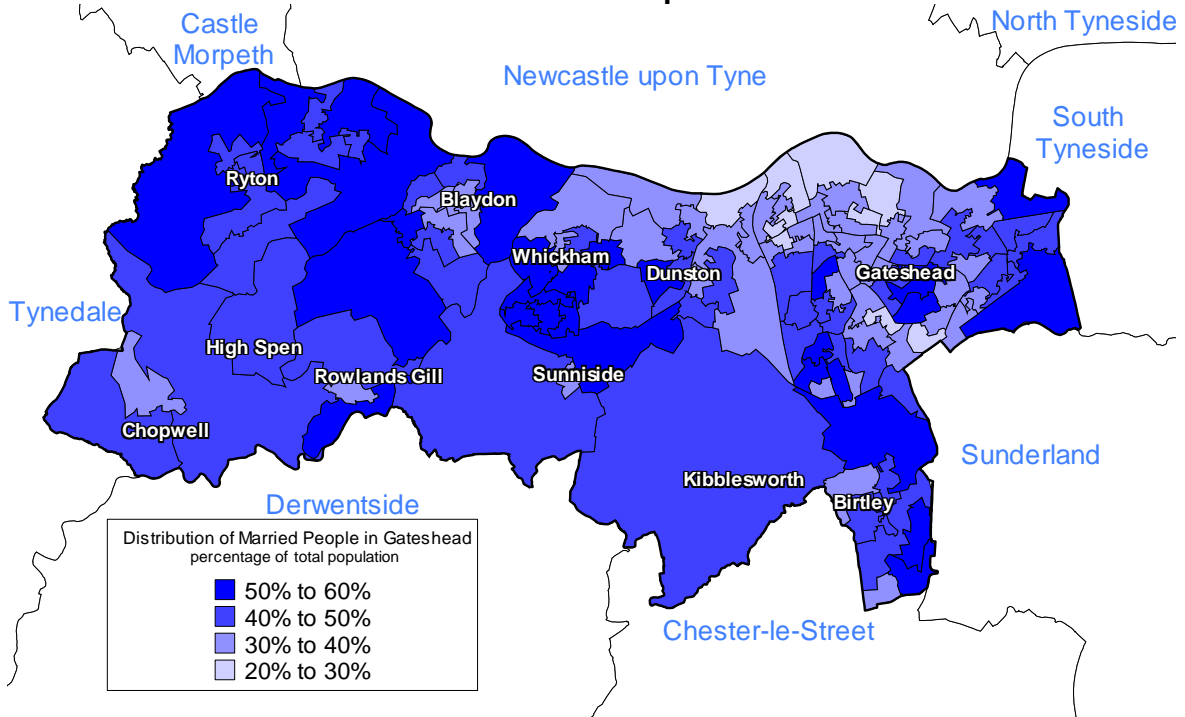
Source: Census 2001 Neighbourhood Statistics (<http://neighbourhood.statistics.gov.uk/>), Office of National Statistics

Distribution of Single People in Gateshead

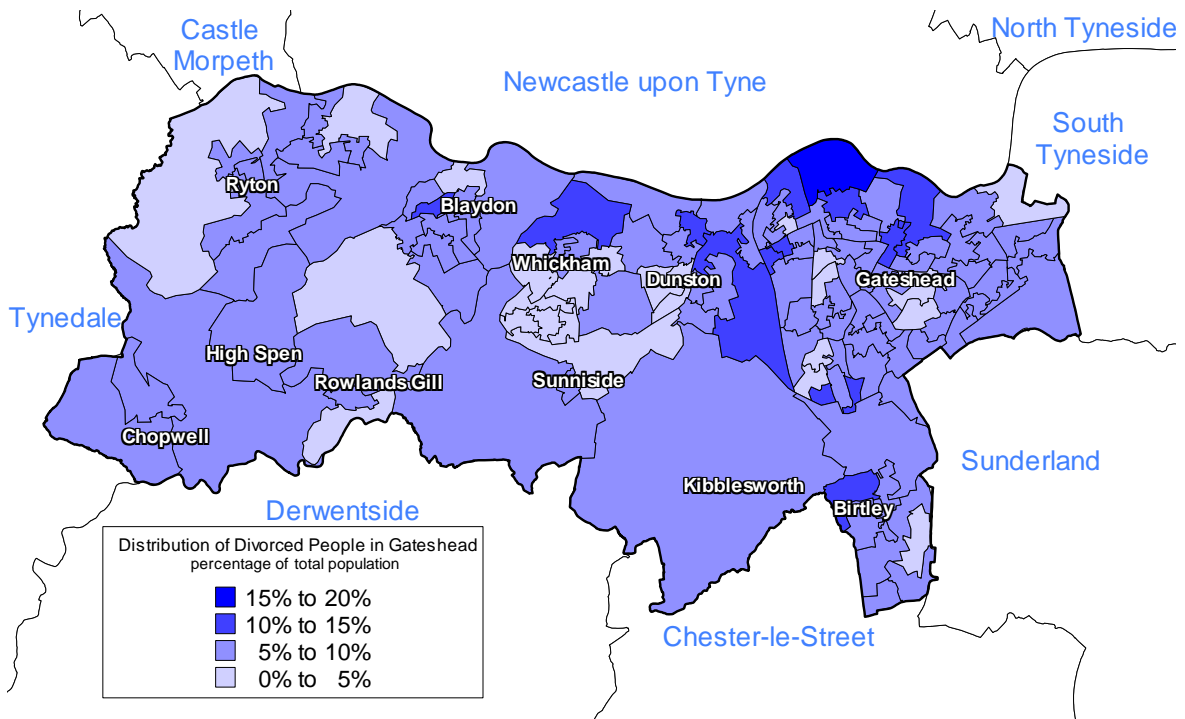


Source: Census 2001 Neighbourhood Statistics (<http://neighbourhood.statistics.gov.uk/>), Office of National Statistics

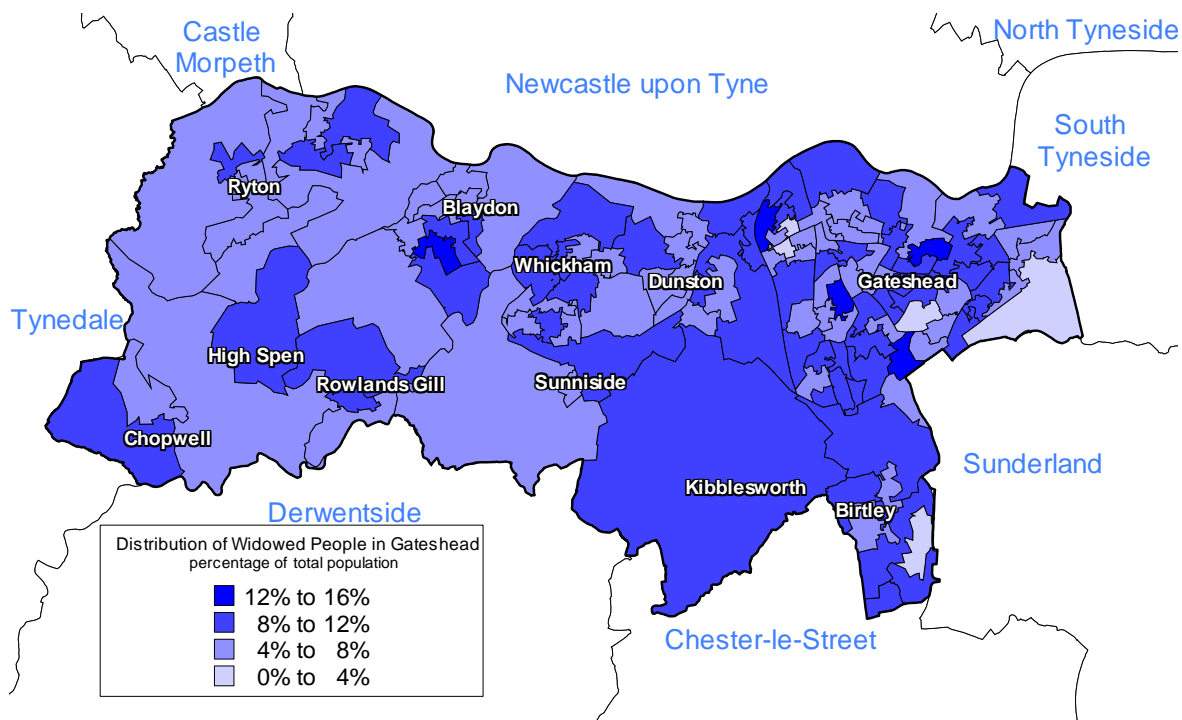
Distribution of Married People in Gateshead



Distribution of Divorced People in Gateshead



Distribution of Widowed People in Gateshead

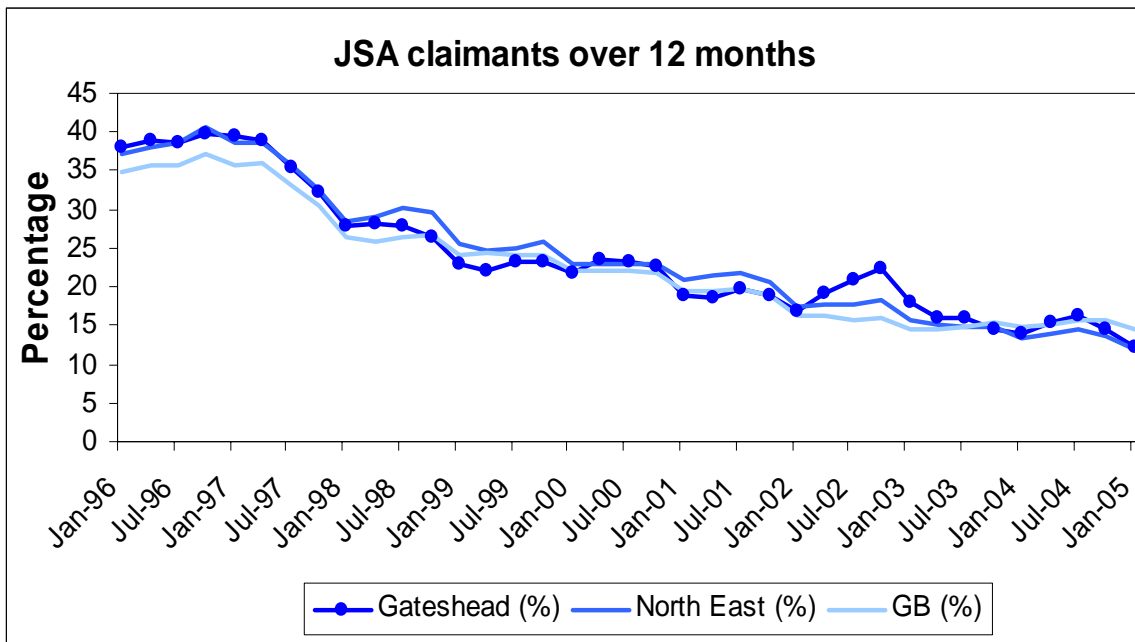


Source: Census 2001 Neighbourhood Statistics (<http://neighbourhood.statistics.gov.uk/>), Office of National Statistics

JSA Claimants over 12 months

	Gateshead	Gateshead (%)	North East (%)	GB (%)
Jan-96	3735	37.90	37.10	34.70
Apr-96	3665	38.80	38.10	35.70
Jul-96	3405	38.70	38.70	35.60
Oct-96	3140	39.70	40.60	37.10
Jan-97	2990	39.50	38.70	35.70
Apr-97	2720	38.80	38.70	36.00
Jul-97	2325	35.40	35.70	33.10
Oct-97	1925	32.20	32.50	30.40
Jan-98	1780	27.80	28.50	26.30
Apr-98	1660	28.10	29.10	25.90
Jul-98	1550	27.90	30.30	26.40
Oct-98	1390	26.50	29.60	26.80
Jan-99	1315	23.00	25.60	24.20
Apr-99	1260	22.20	24.80	24.40
Jul-99	1250	23.10	25.10	24.20
Oct-99	1130	23.20	25.80	24.10
Jan-00	1145	21.90	22.90	22.00
Apr-00	1135	23.40	23.00	22.20
Jul-00	1065	23.20	22.90	22.00
Oct-00	940	22.70	23.00	21.80
Jan-01	850	19.00	20.90	19.40
Apr-01	785	18.60	21.50	19.40
Jul-01	760	19.60	21.70	19.60
Oct-01	715	18.90	20.60	19.00
Jan-02	775	16.80	17.40	16.30
Apr-02	870	19.20	17.80	16.20
Jul-02	855	20.80	17.70	15.80
Oct-02	810	22.40	18.20	16.00
Jan-03	725	17.90	15.60	14.50
Apr-03	615	16.00	15.00	14.50
Jul-03	570	16.00	14.90	14.80
Oct-03	485	14.40	14.70	15.40
Jan-04	515	13.90	13.30	14.80
Apr-04	520	15.40	13.90	15.20
Jul-04	525	16.40	14.40	15.80
Oct-04	445	14.60	13.60	15.70
Jan-05	445	12.30	11.90	14.40

Source: ONS



Source: ONS

House Price/Earnings Affordability Ratio

House prices, household incomes and house price to income ratios.	1998 prices 4/5 room dwellings £	2002 prices 4/5 room dwellings £	Working household incomes £	House price to income ratio
Gateshead	42,384	61,626	28,874	2.13
Newcastle Upon Tyne	46,365	67,415	30,555	2.21
North Tyneside	42,965	62,471	28,119	2.22
South Tyneside	39,751	57,798	27,592	2.09
Sunderland	40,313	58,615	25,780	2.27
North East	-	62,089	27,405	2.27
England		115,181	34,197	3.37

Source: Joseph Rowntree Foundation

Ratio analysis

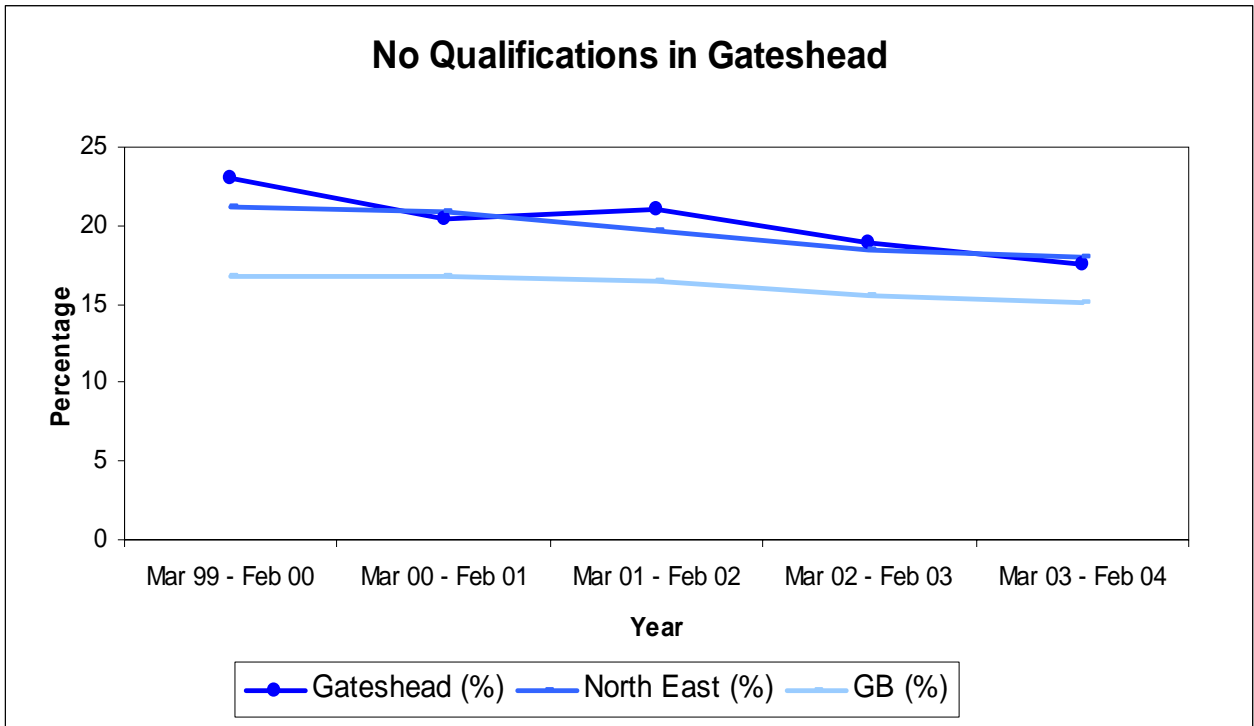
This computes house price area to income ratios for every local authority in England. These are based on average house prices for 4/5 room dwellings, and average household incomes for working households with a household representative aged from 20 to 39 inclusive.

House prices are taken from specially commissioned data set obtained from Halifax plc.

Number of people with no qualifications in Gateshead

	Gateshead	Gateshead (%)	North East (%)	GB (%)
Mar 99 - Feb 00	28,000	23.00	21.20	16.80
Mar 00 - Feb 01	24,000	20.50	20.90	16.70
Mar 01 - Feb 02	24,000	21.00	19.70	16.50
Mar 02 - Feb 03	22,000	18.90	18.40	15.60
Mar 03 - Feb 04	20,000	17.50	18.00	15.10

Source: Local area labour force survey
 Percentage figures are based on working age population



Number of economically active people in Gateshead

	Gateshead	Gateshead (%)	North East (%)	GB (%)
Mar 99 - Feb 00	81,000	67.10	66.60	73.80
Mar 00 - Feb 01	82,000	70.30	68.40	74.10
Mar 01 - Feb 02	82,000	70.90	68.40	74.30
Mar 02 - Feb 03	85,000	73.30	68.60	74.20
Mar 03 - Feb 04	85,000	72.80	68.50	74.30

Source: Local area labour force survey

Percentage figures are based on working age population

