

# Disease Prevalence in Primary Care

Compendium of Health Related Statistics  
April 2005

## Disease Prevalence in Primary Care

### Introduction:

Since the implementation of the new GMS contract in April 2004, Gateshead practices have been automatically uploading disease specific information to a central administration system known as QMAS (Quality Management and Analysis system). Using this facility we are able to derive regional prevalence figures for the most common diseases. In addition, QMAS has calculated a national prevalence level for each of these diseases.

At present further information on QMAS is available only to NHS staff (see [www.qmastraining.nhs.uk](http://www.qmastraining.nhs.uk)). However, it is due to become publicly available on the Health and Social Care Information Centre website ([www.ic.nhs.uk](http://www.ic.nhs.uk)) in June 2005. Until that time, requests for QMAS data, facilitated under the Freedom of Information Act (2000), should be addressed to [information.governance@ic.nhs.uk](mailto:information.governance@ic.nhs.uk).

The figures and charts provided below give a snapshot of prevalence levels in Gateshead compared to national levels as at the end of the 2004-5 financial year.

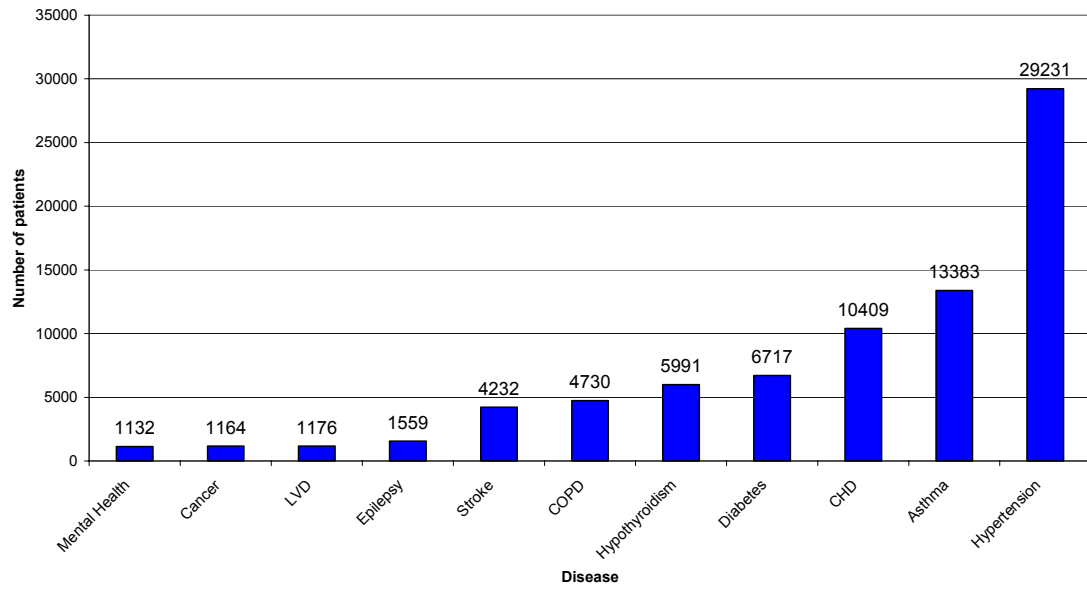
Disease prevalence has also been monitored via QMAS on a monthly basis. Charts are included to display the trends in this data across the 2004-5 financial year. By measuring prevalence over time we can identify increases or decreases in key diseases as well as highlighting issues relating to the recording of diagnoses.

### Primary Care Patients: March 2005

	Number of patients on practice registers - Gateshead PCT	PCT prevalence	National Prevalence
Mental Health	1132	0.56%	0.86%
Cancer	1164	0.57%	0.48%
Left Ventricular Dysfunction (LVD)	1176	0.58%	0.44%
Epilepsy	1559	0.77%	0.58%
Stroke	4232	2.08%	1.66%
Chronic Obstructive Pulmonary Disease (COPD)	4730	2.32%	1.32%
Hypothyroidism	5991	2.94%	2.04%
Diabetes	6717	3.30%	3.35%
Coronary Heart Disease (CHD)	10409	5.11%	3.46%
Asthma	13383	6.57%	5.57%
Hypertension	29231	14.35%	10.89%
Total practice population at March 2005	203658		

Source: QMAS end of year report, March 2005

**Number of Patients Listed on Main Diseases Registers in Primary Care:  
March 2005**

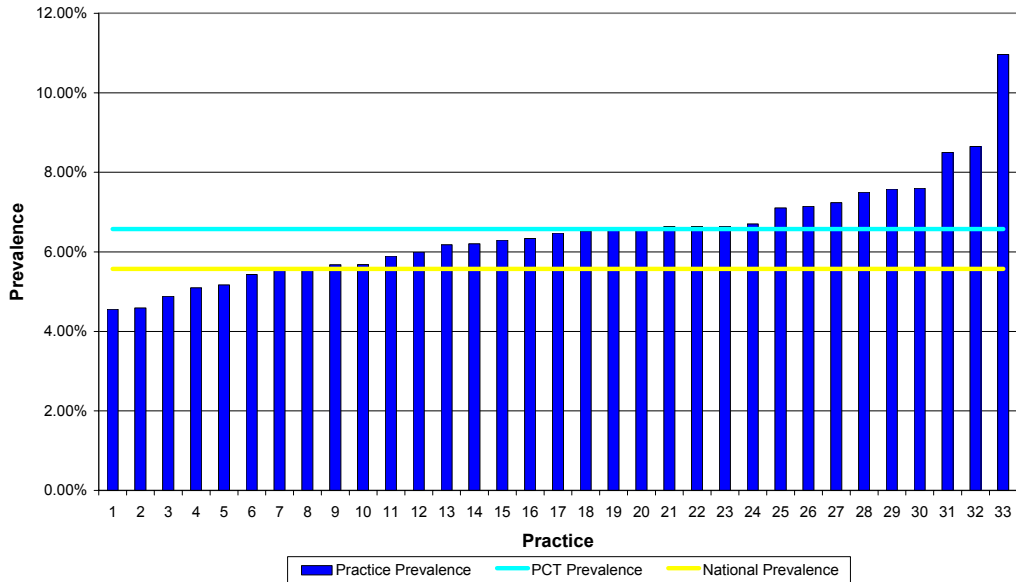


---

Source: QMAS end of year report, March 2005

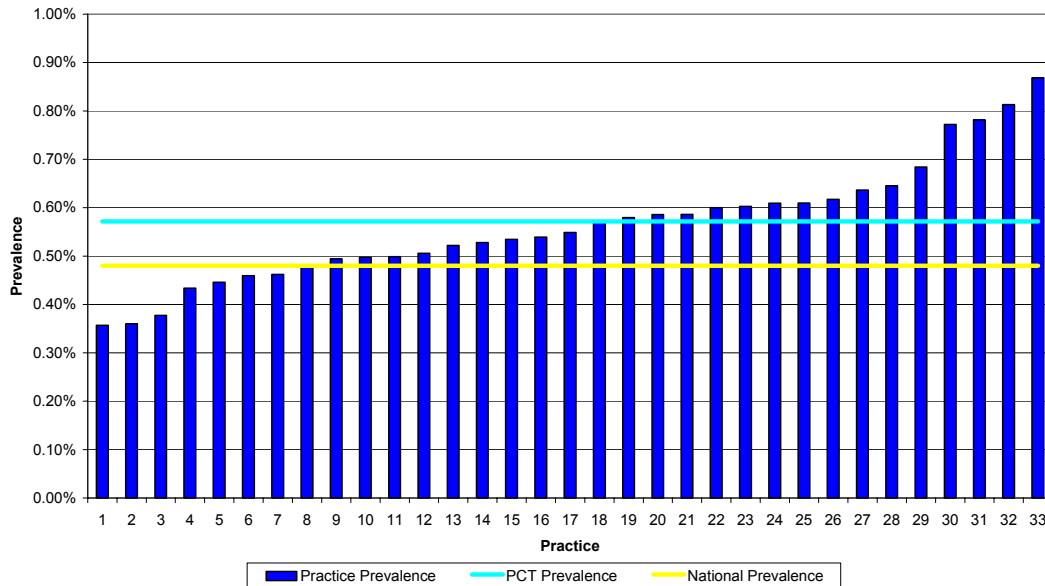
# Prevalence Charts

Prevalence of Asthma in Gateshead, by GP Practice: March 2005



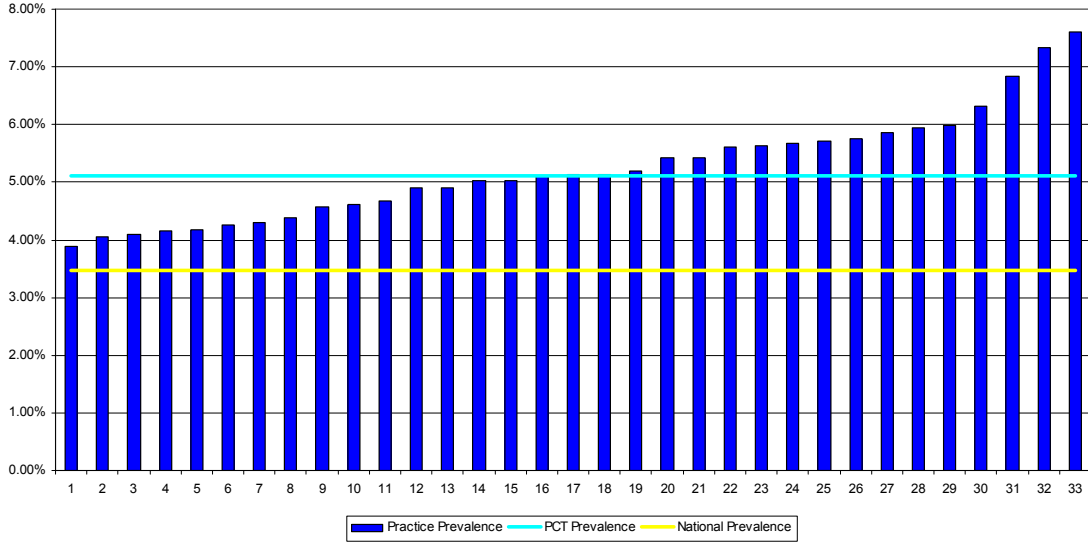
Patients whose clinical record contains READ code(s) within the group H33

Prevalence of Cancer in Gateshead, by GP Practice: March 2005



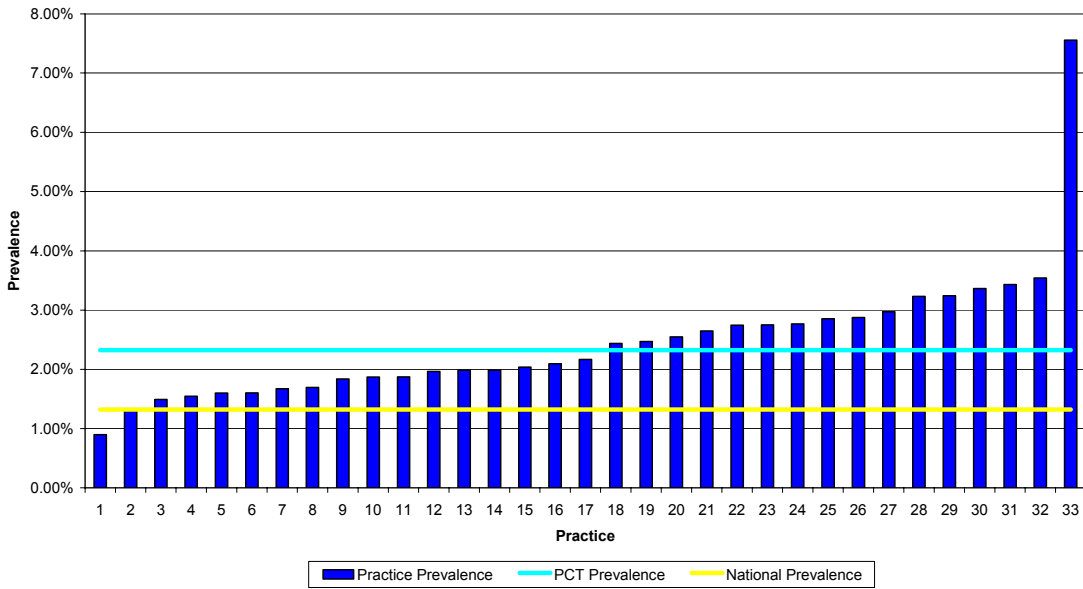
Patients whose clinical record contains READ code(s) within the following groups: B0, B1, B2, B3, B4, B5, B6, Byu0, Byu1, Byu2, Byu3, Byu4, Byu5, Byu6, Byu7, Byu8, Byu9, ByuA, ByuB, ByuC, ByuD, ByuE (excluding B33, Byu42, Byu43)

### Prevalence of CHD in Gateshead, by GP Practice: March 2005



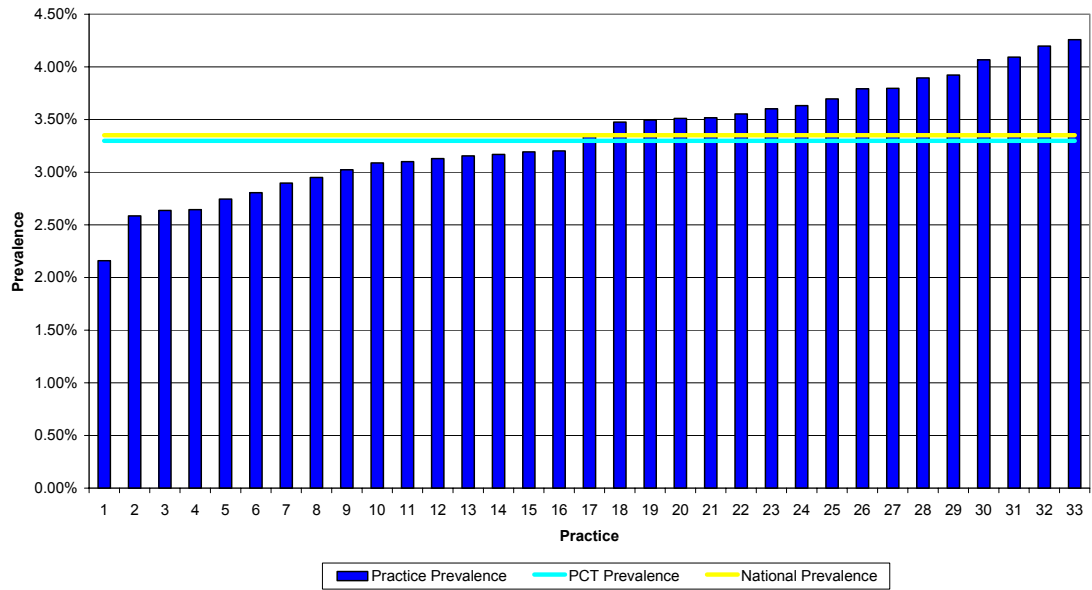
Patients whose clinical record contains READ code(s) within the group G3 (excluding G341, G37)

### Prevalence of COPD in Gateshead, by GP Practice: March 2005



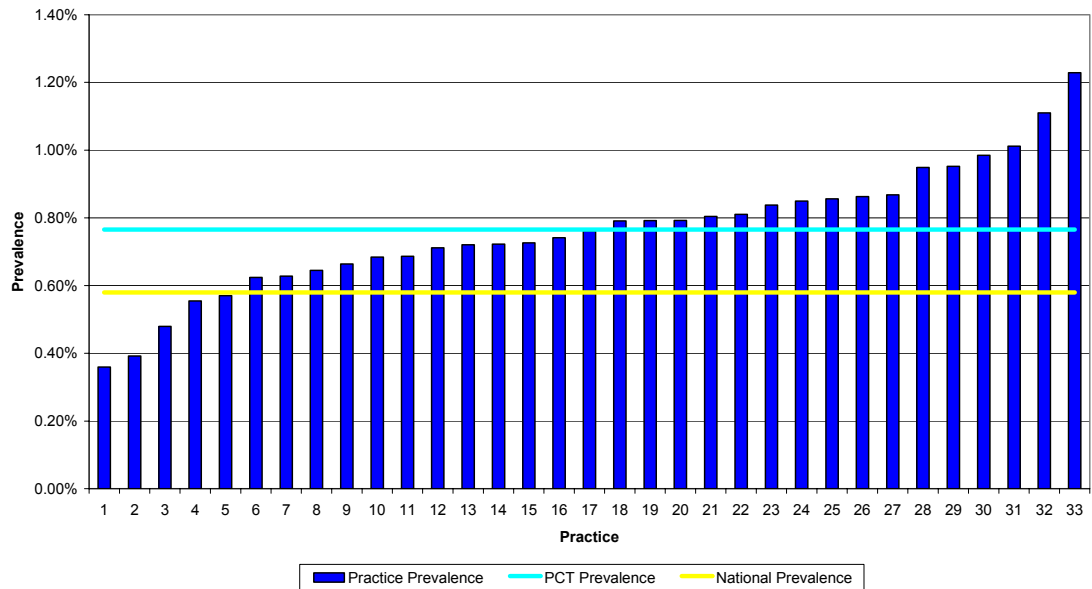
Patients whose clinical record contains READ code(s) within the following groups: H3, H32, H36, H37, H38, H3y, H3z, H31 (excluding H3101, H31y0)

### Prevalence of Diabetes in Gateshead, by GP Practice: March 2005



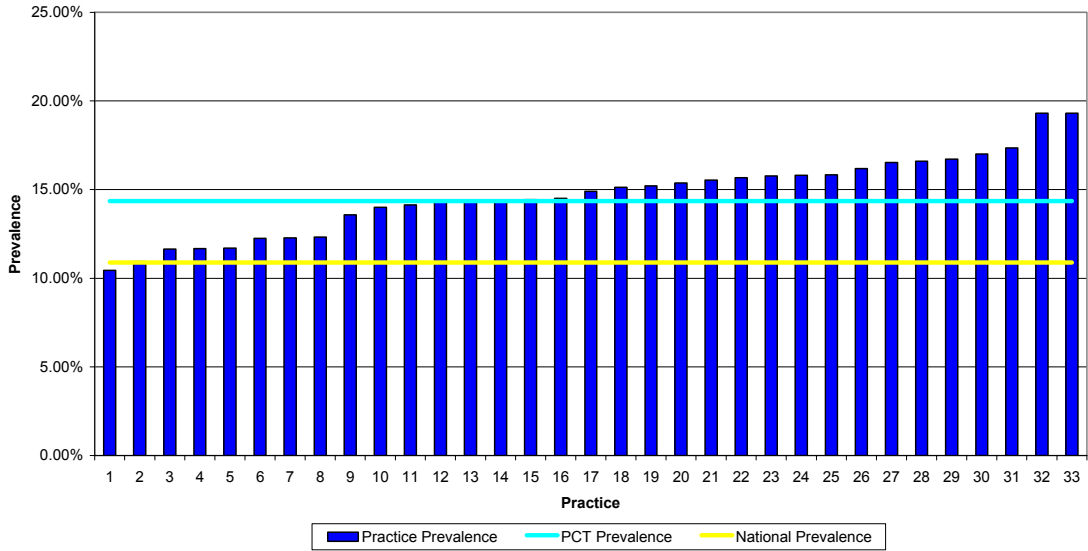
Patients whose clinical record contains READ code(s) within the group C10 and are over the age of 17

### Prevalence of Epilepsy in Gateshead, by GP Practice: March 2005



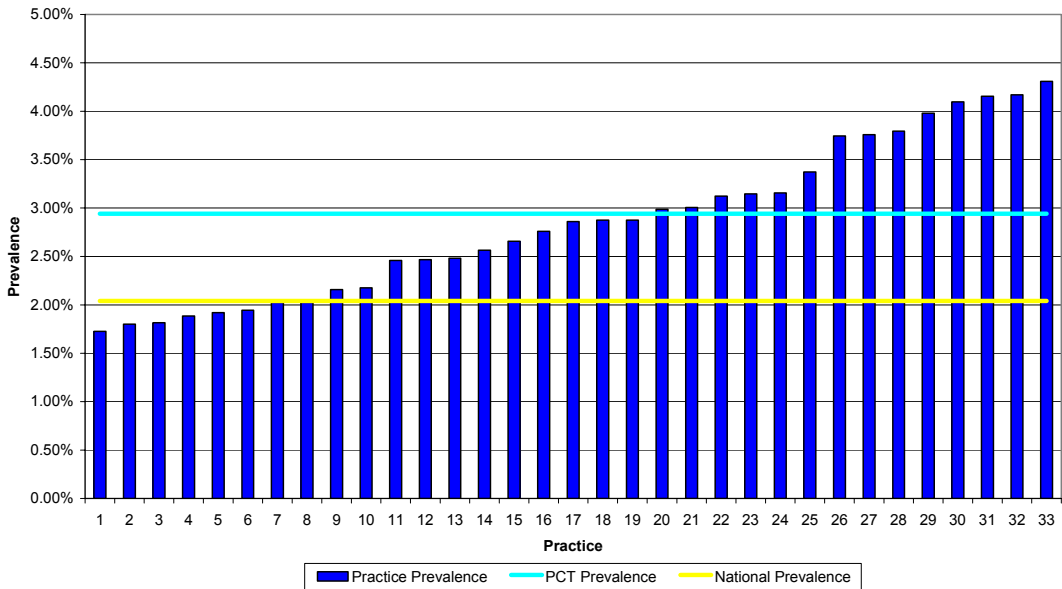
Patients whose clinical record contains READ code(s) within the following groups: F1321, SC200, F25 (excluding F2516)

**Prevalence of Hypertension in Gateshead, by GP Practice:  
March 2005**



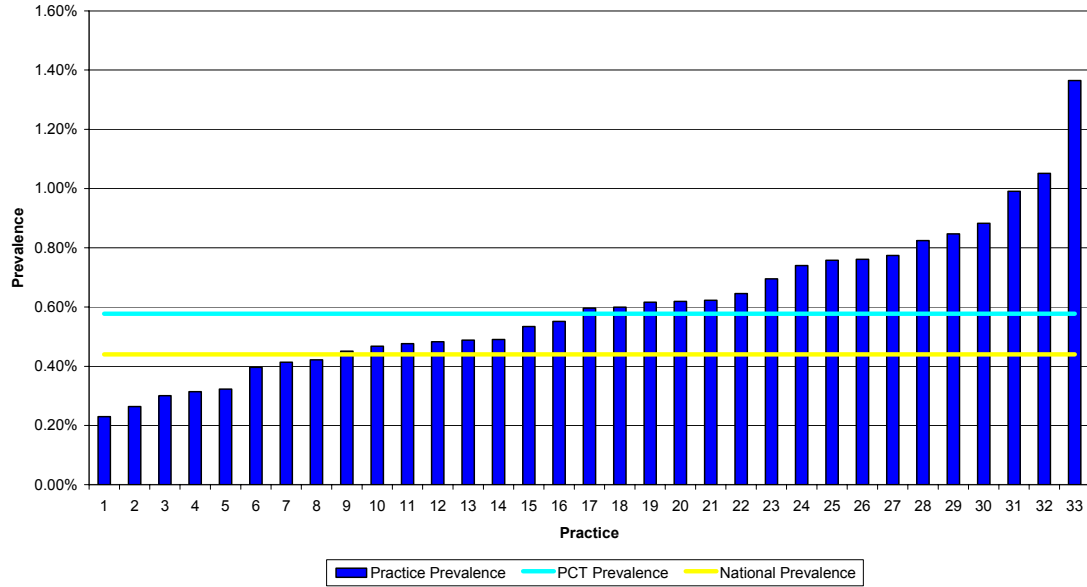
Patients whose clinical record contains READ code(s) within the following groups: G20, G24, G2y, G2z, G2

**Prevalence of Hypothyroidism in Gateshead, by GP Practice:  
March 2005**



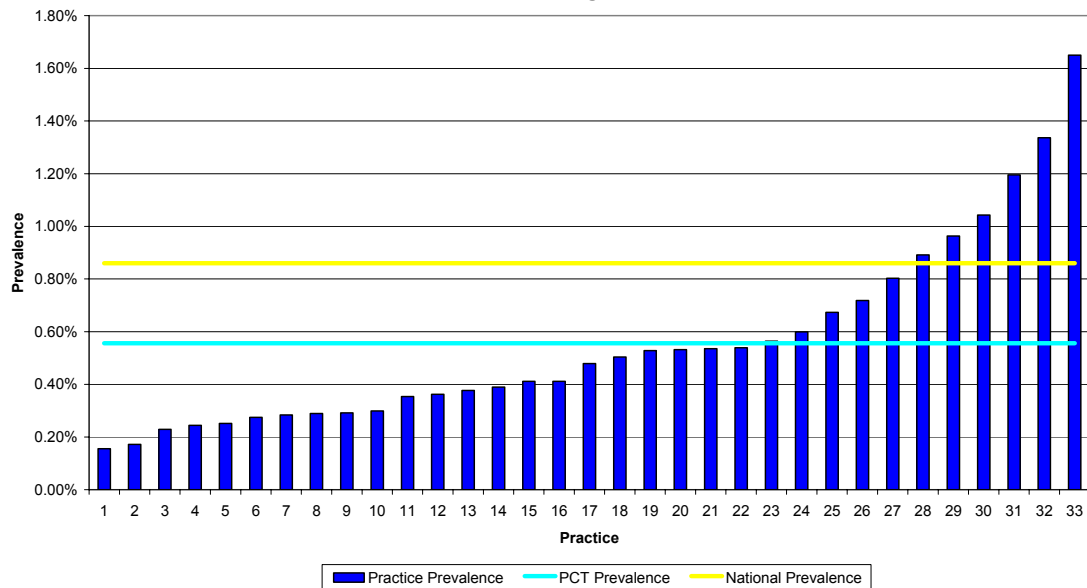
Patients whose clinical record contains READ code(s) within the groups C03, C04

### Prevalence of LVSD in Gateshead, by GP Practice: March 2005



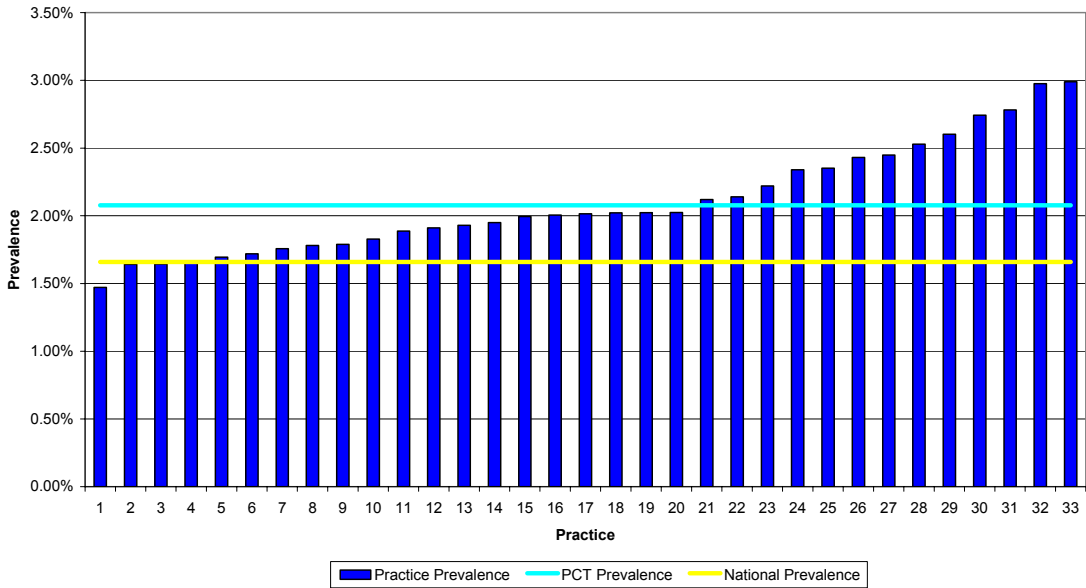
Patients whose clinical record contains READ code(s) within the following groups: G58, G5yy9, G1yz1, G5yyA, G3 (excluding G341, G37)

### Percentage of Gateshead PCT Practice Population listed on Mental Health Registers: March 2005



Patients whose clinical record contains READ code(s) 9H6, 9H8, or have a current prescription for Lithium

### Prevalence of Stroke in Gateshead, by GP Practice: March 2005

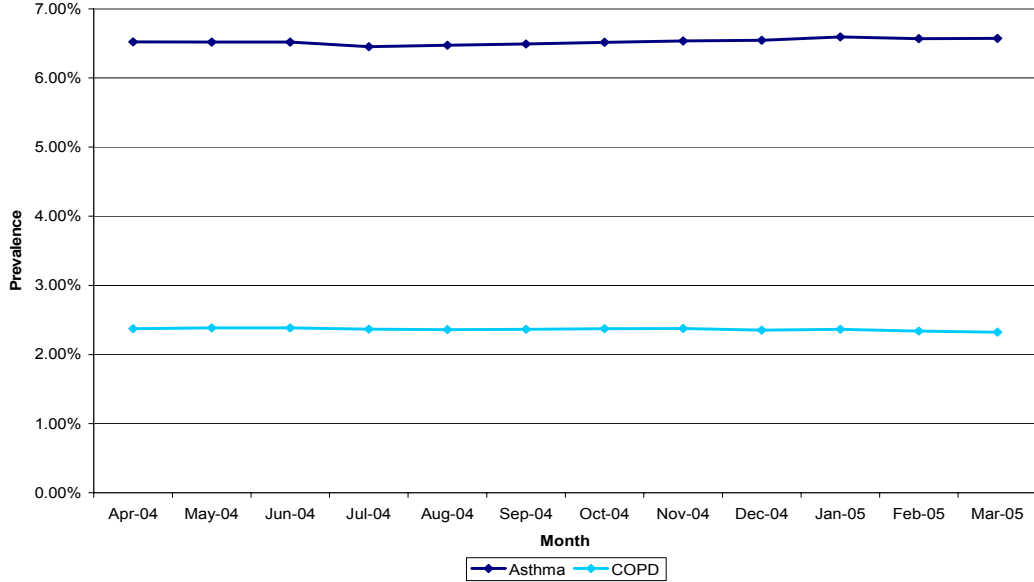


Patients whose clinical record contains READ code(s) within the following groups: G61, G63y0, G63y1, G64, G66, G6760, G6W, G6X, G65 (excluding G655, G617)

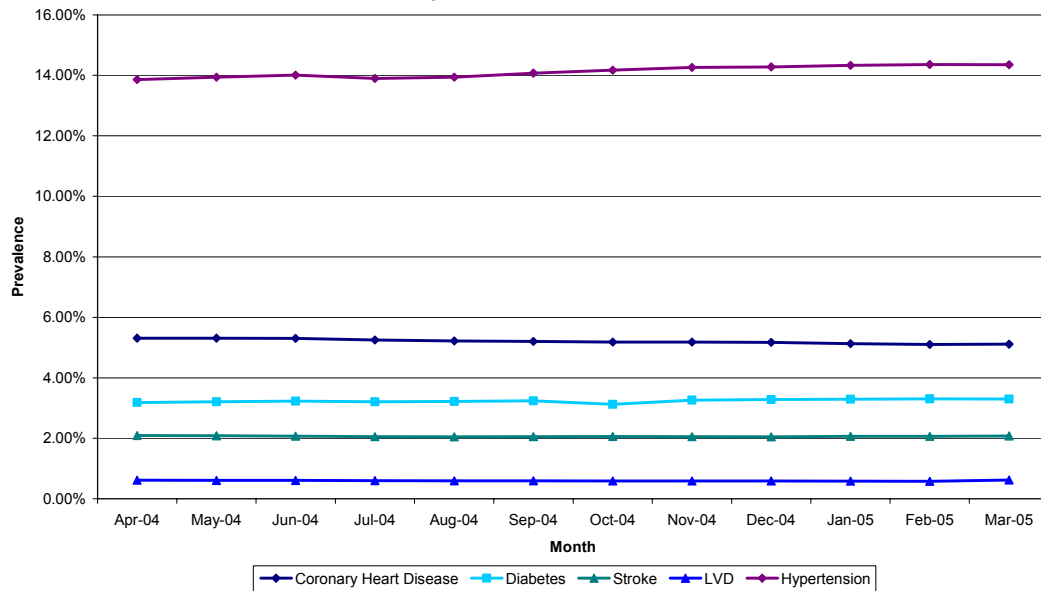
---

Source: QMAS end of year report, March 2005

**Prevalence of Asthma and COPD in Gateshead, Measured Monthly Between April 2004 and March 2005**

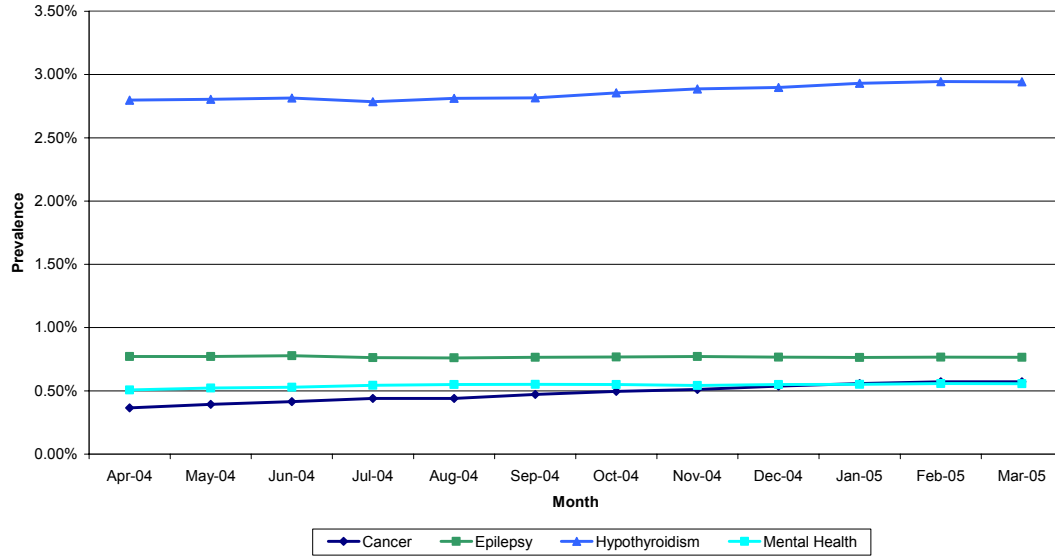


**Prevalence of CHD, Diabetes, Stroke, LVD and Hypertension in Gateshead - Measured Monthly Between April 2004 and March 2005**



Source: QMAS end of year report, March 2005

**Prevalence of Cancer, Epilepsy, Hypothyroidism and Mental Health  
Registration in Gateshead - Measured Monthly Between April 2004 and  
March 2005**



Source: QMAS end of year report, March 2005