

Chapter 3

Cancer

This page is designed to be blank



3 Cancer

Index

Introduction

All Cancers

- 3.1 Mortality from all cancers, directly age-standardised mortality rates, people under 75 years (Our Healthier Nation indicator)
- 3.2 Mortality from all cancers, indirectly age-standardised mortality ratios, people under 75 years
- 3.3 Mortality from all cancers, indirectly age-standardised mortality ratios, people all ages
- 3.4 Mortality from all cancers by Gateshead electoral ward
- 3.5 Mortality from all cancers, number of deaths in Gateshead by type of cancer
- 3.6 Mortality from all cancers, years of life lost in Gateshead by type of cancer
- 3.7 Incidence of all cancers, directly age-standardised registration rate, people of all ages
- 3.8 Incidence of all cancers, registrations in Gateshead by type of cancer
- 3.9 Prevalence of all cancers within primary care
- 3.10 Prevalence of all cancers by location of GP practice

Lung Cancer

- 3.11 Mortality from lung cancer, directly age-standardised mortality rates, people under 75 years
- 3.12 Mortality from lung cancer, directly age-standardised mortality rates, people of all ages
- 3.13 Mortality from lung cancer, indirectly age-standardised mortality ratios due to lung cancer, people under 75 years
- 3.14 Mortality from lung cancer, indirectly age-standardised mortality ratios, people of all ages
- 3.15 Incidence of lung cancer, directly age-standardised registration rate, people of all ages
- 3.16 Incidence of lung cancer, indirectly age-standardised registration ratio, people of all ages
- 3.17 Lung cancer, number of registrations by age band

Colorectal cancer

- 3.18 Mortality from colorectal cancer, indirectly age-standardised mortality ratio, people of all ages
- 3.19 Incidence of colorectal cancer, indirectly age-standardised registration ratio, people of all ages
- 3.20 Colorectal cancer, number of registrations by age band

Breast cancer

- 3.21 Mortality from breast cancer, indirectly age-standardised mortality ratio, people under 75 years
- 3.22 Mortality from breast cancer, indirectly age-standardised mortality ratio, people of all ages
- 3.23 Incidence of breast cancer, indirectly age-standardised registration ratio, people of all ages
- 3.24 Breast cancer, number of registrations by age band
- 3.25 Coverage of breast screening among women ages 53 to 64 years

Stomach cancer

- 3.26 Mortality from stomach cancer, indirectly age-standardised mortality ratio, people of all ages
- 3.27 Incidence of stomach cancer, indirectly age-standardised registration ratio, people of all ages
- 3.28 Stomach cancer, number of registrations by age band

Prostate cancer

- 3.29 Mortality from prostate cancer, indirectly age-standardised mortality ratio, people of all ages
- 3.30 Incidence of prostate cancer, indirectly age-standardised registration ratio, people of all ages
- 3.31 Incidence of prostate cancer, number of registrations by age band

Oesophageal cancer

- 3.32 Mortality from oesophageal cancer, indirectly standardised mortality ratio, people of all ages
- 3.33 Incidence of oesophageal cancer, indirectly standardised registration ratio, people of all ages
- 3.34 Incidence of oesophageal cancer, number of registrations by age band

Cervical cancer

- 3.35 Mortality from cervical cancer, indirectly age-standardised mortality ratio, people of all ages
- 3.36 Incidence of cervical cancer, indirectly age-standardised registration ratio, people of all ages
- 3.37 Coverage of cervical screening among women ages 25 to 64 years

Malignant melanoma (skin cancer)

- 3.38 Mortality from malignant melanoma, indirectly age-standardised mortality ratio, people of all ages
- 3.39 Incidence of malignant melanoma, indirectly age-standardised registration ratio, people of all ages

Glossary of terms

3 Cancer

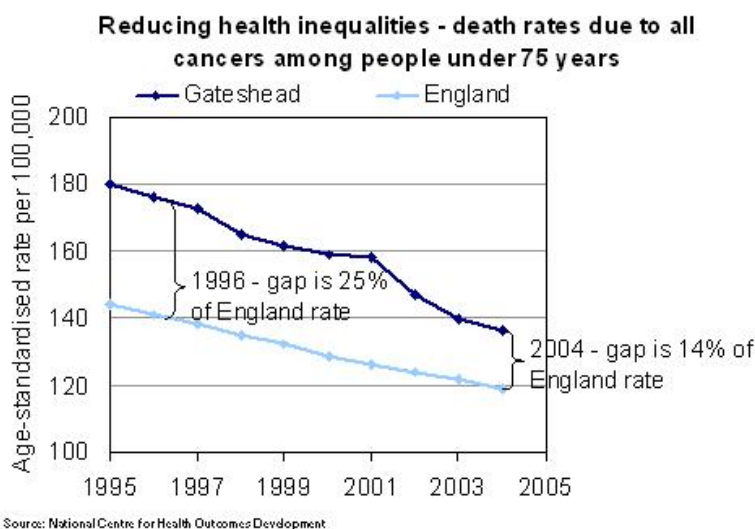
Introduction

Cancer is not a single disease, but is a term for a wide variety of conditions all of which have in common the uncontrolled multiplication of cells. Each different type of cancer has its own causes, vulnerable groups, treatment and severity of impact. This Chapter focuses on those which cause the most loss of years of life.

In 1998 a government report, "Our Healthier Nation"¹ set out a target to reduce premature mortality (deaths under 75 years of age) due to all cancers between 1996 and 2010 by 20%. In Gateshead, as in many other areas of England, the 20% reduction in premature mortality due to cancer has already been realised. Between 1996 and 2004 the rate in Gateshead has fallen by 23% (section 3.1). It is always difficult to establish a direct link between changes in health outcomes and the factors that cause these, but improvements in care, more effective medicines, reduced waiting times for treatment and improved lifestyles will have all contributed to the fall in the number of premature deaths due to cancer. Behaviour in relation to tobacco, food, alcohol, sunlight, lack of exercise and sexual health increases certain risks of cancer.

In 2003, with the publication of "Tackling Health Inequalities: a programme for action"², the government raised the bar for health care organisations in areas with poor health, defined as those local authorities among the 20% of areas with the lowest average life expectancy. Gateshead is among this group. "Tackling Health Inequalities" recognised that there are wide variations in health status across England and set a target for a 10% reduction in the 'health inequalities gap' between areas with poor health and England as a whole by 2010. This gap is to be measured by variations in life expectancy at birth and the infant mortality rate. 40% of all deaths under 75 years of age in Gateshead are due to one of the many

different forms of cancer³. Consequently, any reduction in the premature cancer mortality rate makes a significant contribution to increasing average life expectancy. In 1996 this rate was 25% higher in Gateshead than the rate for England as a whole. By 2004 this gap had fallen to 14% of the England rate. Local success in reducing



¹ Department of Health, 1999, Saving Lives: Our Healthier Nation, The Stationery Office, London

² Department of Health, 2003, Tackling Health Inequalities: A Programme for Action, Department of Health, London

³ National Centre for Health Outcomes Development, 2006, Clinical and Health Outcomes Knowledge Base, internet publication at www.nchod.nhs.uk

premature cancer mortality is contributing to reducing the overall health inequality gap between Gateshead and England.

This positive news must be balanced by noting that mortality and incidence rates due to lung cancer, colorectal cancer and stomach cancer are all significantly higher than rates for England as a whole. The mortality rate due to lung cancer in particular is around 60% higher than the rate for England (section 3.9).

The link between smoking and lung cancer is well established⁴. Smoking is the biggest single cause of cancer and smoking rates remain highest among those who are most disadvantaged. Reducing the number of people who smoke will have a big effect on local cancer mortality rates in the medium to long-term. Gateshead has an NHS Stop Smoking Service which offers support to people who wish to give up smoking but are finding it difficult. Over a three year period between 2004 and 2006 the service has supported over 4,000 people in Gateshead to successfully give up smoking as measured by smoking status four weeks after giving up. In addition, it is hoped that the change in legislation, which will ban smoking in enclosed public places across England from 1st July 2007, will encourage more people to give up. A similar legislative change which came into effect in Scotland in 2006 was accompanied by a sharp increase in demand for Stop Smoking Services.

The main aim for this Chapter is to provide an overview of health outcomes in Gateshead relating to the most common types of cancer and to provide comparative figures for the North East region and England as a benchmark. The chapter focuses on those types of cancer which are most commonly diagnosed. The two exceptions to this are cervical cancer, included in order to monitor the effects of the cervical cancer screening service over time, and malignant melanoma, included due to the recent rise in diagnoses and concern about inappropriate use of sunbeds. Some items describe inequalities in health within Gateshead, such as the ward level cancer mortality rates illustrated in section 3.4. Two items also monitor the uptake of screening services for cervical and breast cancer.

The content is evolving and so the interested reader is encouraged to respond to Gateshead PCT via the reply form in the Compendium Introduction if there are useful indicators and statistics which have been overlooked.

For further information contact:

Public Health Analyst, Gateshead PCT, Team View, 5th Avenue Business Park, Gateshead, NE11 0NB Tel: 0191 491 5713

⁴Department of Health, 1998, Smoking Kills, The Stationery Office, London

Acknowledgements

This chapter of the Gateshead Compendium of Health Related Statistics contains data from a range of partner agencies. Sources of data are detailed at the foot of each individual data item. Thanks are extended to the following organisations for providing and allowing use of their information:

Department of Health

The Information Centre

National Centre for Health Outcomes Development, London School of Hygiene and Tropical Medicine

North East Public Health Observatory

Northern and Yorkshire Cancer Information Service and Registry

Office for National Statistics



All Cancers

3.1 Mortality from all cancers, directly age-standardised mortality rates, people under 75 years

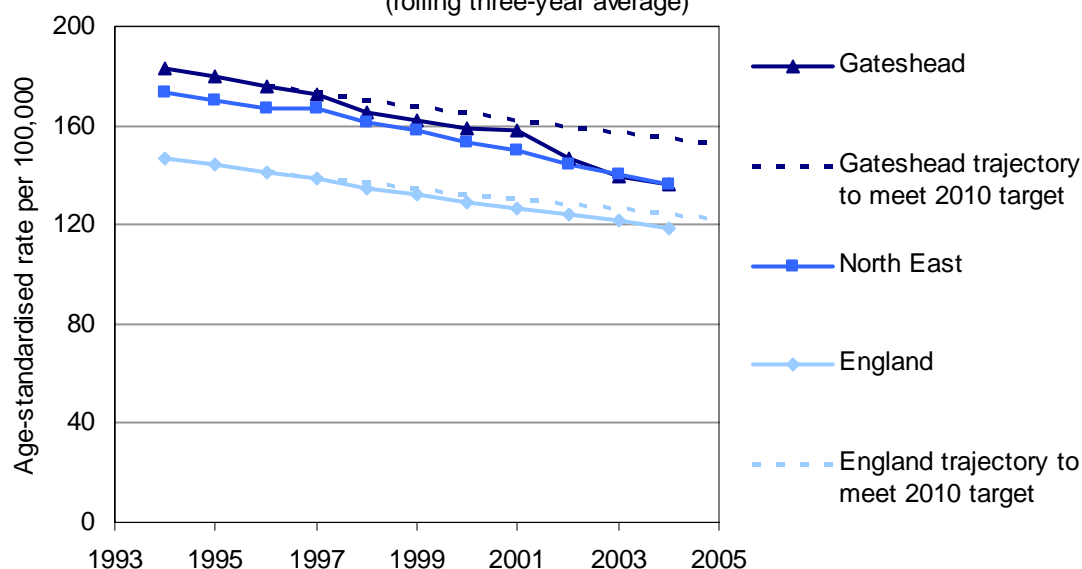
Our Healthier Nation target: To reduce deaths from all cancers among persons under 75 years of age by at least 20% by the year 2010

Directly age-standardised mortality rate (DMR) due to all malignant neoplasms (ICD9 390-459 adjusted, ICD10 C00-C97) per 100,000 population.

		Baseline Rate 1995-97		Rate 2003-05 (Pooled)			% Reduction	Target 2010 Rate	
		No. of deaths	Rate	No. of deaths	Rate	Lower confidence interval			Upper confidence interval
Gateshead	Males	682	211.5	500	156.3	142.5	170.1	26.1	169.2
	Females	511	145.3	413	118.0	106.4	129.6	18.8	116.2
	Persons	1192	176.0	913	136.2	127.2	145.1	22.6	140.8
NE	Males	7934	196.3	6410	154.4	150.6	158.2	21.3	157.1
	Females	6265	142.6	5309	119.9	116.7	123.2	15.9	114.1
	Persons	14199	167.3	11719	136.2	133.7	138.7	18.6	133.8
England	Males	116615	160.8	101923	132.6	131.8	133.5	17.5	128.6
	Females	97464	124.5	86423	106.6	105.9	107.3	14.4	99.6
	Persons	214079	141.2	188346	119.0	118.4	119.5	15.8	113.0

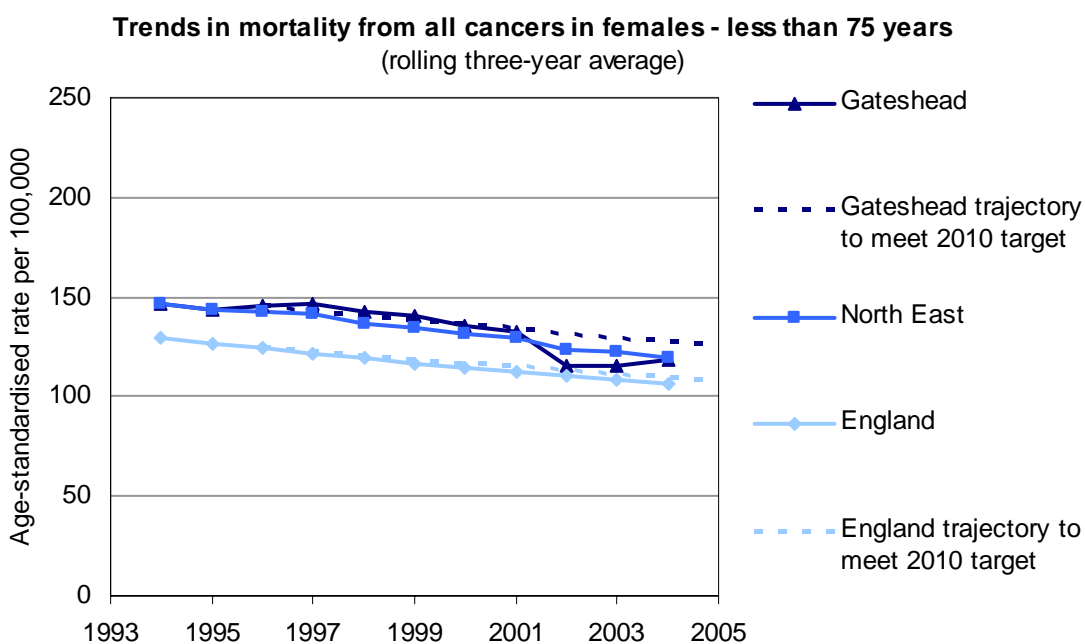
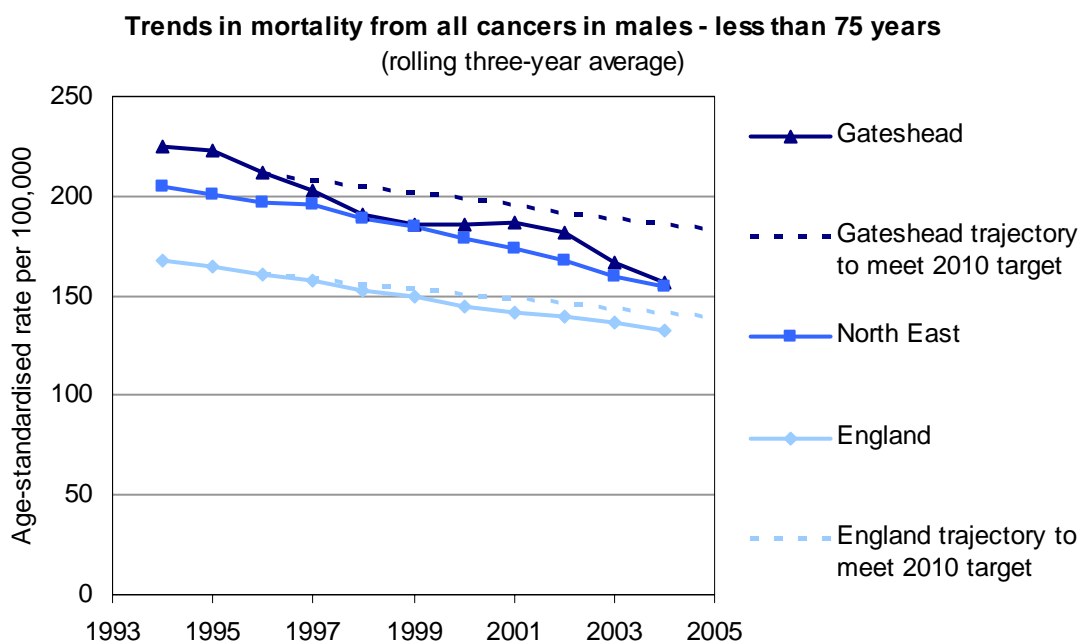
Source: Clinical and Health Outcomes Knowledge Base at www.nchod.nhs.uk

Trends in mortality from all cancers in people - less than 75 years
(rolling three-year average)



Inequalities indicator – in 1996 the Gateshead mortality rate was 25% higher than the rate for England. In 2004 it was only 14% higher. Not only is the mortality rate in Gateshead falling but the health inequalities gap between Gateshead and England is getting smaller.

3.1 Mortality from all cancers, directly age-standardised mortality rates, people under 75 years (cont.)



Local neighbours at a glance

Directly standardised mortality rate per 100,000 population among people ages under 75 due to all cancers, 2003-2005

PCT	Rate
South Tyneside	150
Newcastle	145
North Tyneside	137
Gateshead	136
Sunderland	136
Northumberland	119

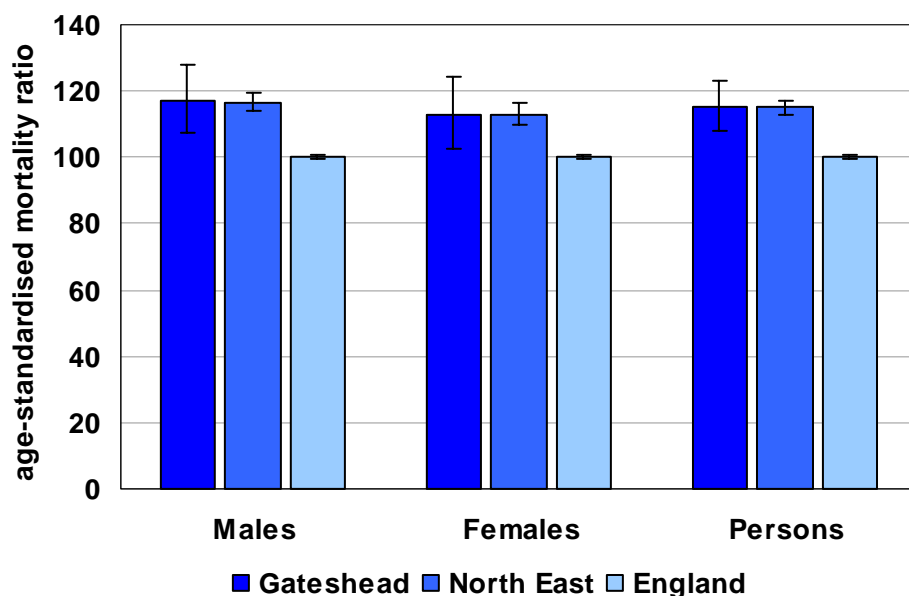
3.2 Mortality from all cancers, indirectly age-standardised mortality ratios, people under 75 years

Indirectly age-standardised mortality ratios (SMR) due to all cancers (ICD10 C00-C97) among people under 75 years, three year pooled.

		2003-05 (Pooled)			
		No. of deaths	SMR	Confidence Interval	
				Lower	Upper
Gateshead	Males	500	117	107	128
	Females	413	113	102	125
	Persons	913	115	108	123
North East	Males	6,410	117	114	120
	Females	5,309	113	110	116
	Persons	11,719	115	113	117
England	Males	101,923	100	99	101
	Females	86,423	100	99	101
	Persons	188,346	100	100	100

Source: Clinical and Health Outcomes Knowledge Base at www.nchod.nhs.uk

**Mortality from all cancers (ICD10 C00-C97) 2003-05 (Pooled)
Less than 75 years**
Indirectly standardised ratios (SMR) with 95% confidence intervals



3.3 Mortality from all cancers, indirectly age-standardised mortality ratios, people all ages

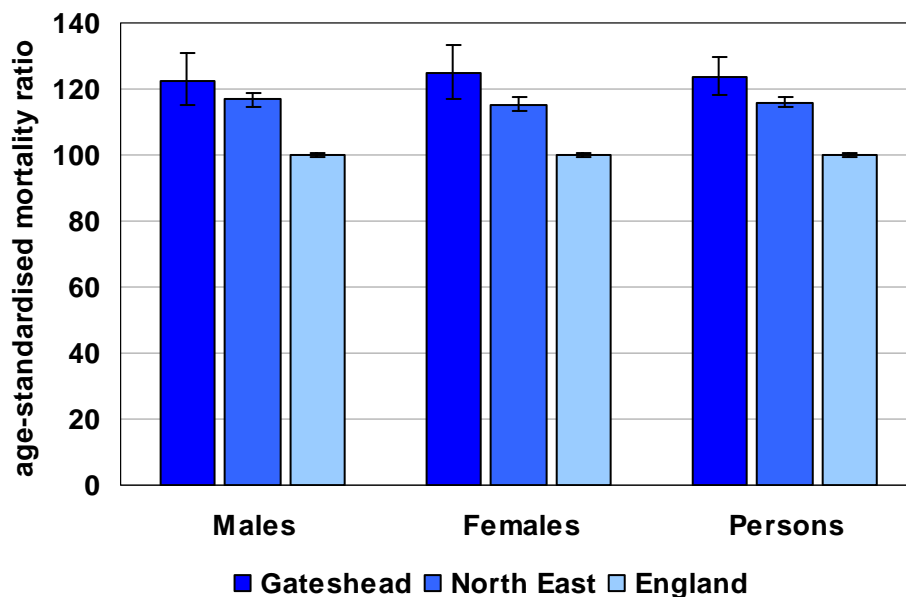
Indirectly age-standardised mortality ratios (SMR) due to all cancers (ICD10 C00-C97) among people of all ages, three year pooled.

		2003-05 (Pooled)			
		No. of deaths	SMR	Confidence Interval	
				Lower	Upper
Gateshead	Males	968	123	115	131
	Females	918	125	117	133
	Persons	1,886	124	118	129
North East	Males	11,942	117	115	119
	Females	10,984	115	113	118
	Persons	22,926	116	115	118
England	Males	197,982	100	100	100
	Females	181,598	100	100	100
	Persons	379,580	100	100	100

Source: Clinical and Health Outcomes Knowledge Base at www.nchod.nhs.uk

Mortality from all cancers (ICD10 C00-C97) 2003-05 (Pooled) All ages

Indirectly standardised ratios (SMR) with 95% confidence intervals



3.4 Mortality from all cancers by Gateshead electoral ward

Directly age-standardised mortality rate due to all cancers (ICD10 C00-C97) per 100,000 population, people of all ages, 2001-2003, three year pooled.

Ward	Rate	Observations	H/L
Bensham	298	80	H
Felling	297	96	H
Saltwell	289	79	H
Bede	254	65	
High Fell	246	95	
Deckham	245	74	
Leam	243	92	
Birtley	240	90	
Blaydon	233	71	
Pelaw and Heworth	222	88	
Dunston	221	88	
Whickham North	220	106	
Teams	217	80	
Chowdene	217	96	
Wrekendyke	216	96	
Winlaton	214	87	
Ryton	203	89	
Whickham South	199	91	
Lamesley	198	76	
Crawcrook and Greenside	190	76	L
Chopwell and Rowlands Gill	186	85	L
Low Fell	176	91	L
Gateshead PCT	224	1,891	
North East	215	23,154	
ENGLAND	186	383,024	

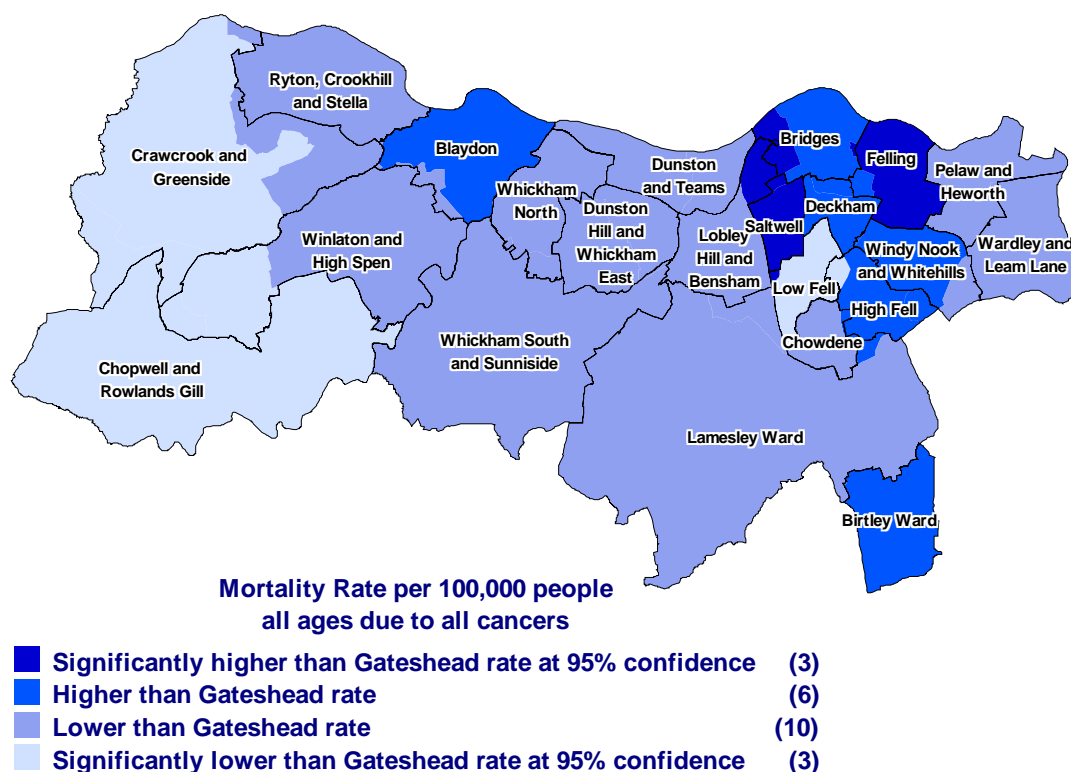
Source: North East Public Health Observatory at www.nepho.org.uk

H/L – significantly higher or lower than the Gateshead rate at the 95% level of significance

3.4 Mortality from all cancers by Gateshead electoral ward (cont.)

Mortality due to all cancers among people of all ages, directly age-standardised ward rates, 2001-2003, three year pooled.

Rates were calculated for the electoral wards in place **prior to June 2004**. The map below shows these rates superimposed over the new Gateshead ward boundaries.



Inequalities indicators, ward mortality rates, all circulatory disease, all ages

a) Interquartile range

The interquartile range measures the spread between the upper and lower quartile values. It measures the spread of values, without being influenced by outlying high or low values. If health inequalities are being reduced, the interquartile range should fall over time.

2001-2003 Lower quartile = 202

2001-2003 Upper quartile = 245

2001-2003 Interquartile range = 43

2000-2002 Interquartile range = 58

b) Average mortality rate among the five poorest performing wards

2001-2003 Average mortality rate = 277

2000-2002 Average mortality rate = 292

3.5 Mortality from all cancers, number of deaths in Gateshead by type of cancer

Persons

	2001	2002	2003	2004	2005
All Cancers	634	624	627	575	678
Lung Cancer	198	167	188	151	204
Colo-rectal Cancer	65	60	74	60	70
Breast Cancer	44	48	32	38	52
Stomach Cancer	29	32	28	30	33
Prostate Cancer	29	34	27	32	26
Oesophageal Cancer	33	31	26	23	24
Cancer of the lip, oral cavity and pharynx	12	9	10	12	8
Cervical Cancer	<5	7	<5	<5	<5
Malignant Melanoma	<5	7	<5	<5	<5

Source: 2005 - Clinical and Health Outcomes Knowledge Base at www.nchod.nhs.uk, 2001-2004 - Northern & Yorkshire Cancer Registry and Information Service at www.nycris.org.uk

Males

	2001	2002	2003	2004	2005
All Cancers	343	339	346	291	328
Lung Cancer	116	109	110	85	97
Colo-rectal Cancer	37	29	45	26	47
Breast Cancer	-	-	-	-	-
Stomach Cancer	16	19	16	16	17
Prostate Cancer	29	34	27	32	26
Oesophageal Cancer	19	18	18	14	15
Cancer of the lip, oral cavity and pharynx	*	*	*	*	*
Cervical Cancer	-	-	-	-	-
Malignant Melanoma	*	*	*	*	*

Source: 2005 - Clinical and Health Outcomes Knowledge Base at www.nchod.nhs.uk, 2001-2004 - Northern & Yorkshire Cancer Registry and Information Service at www.nycris.org.uk

* Numbers of deaths for oral cancer and malignant melanoma are only shown for persons due to small numbers of deaths

Females

	2001	2002	2003	2004	2005
All Cancers	291	285	281	284	350
Lung Cancer	82	58	78	66	107
Colo-rectal Cancer	28	31	29	34	23
Breast Cancer	44	48	32	38	52
Stomach Cancer	13	13	12	14	16
Prostate Cancer	-	-	-	-	-
Oesophageal Cancer	14	13	8	9	9
Cancer of the lip, oral cavity and pharynx	*	*	*	*	*
Cervical Cancer	<5	7	<5	<5	<5
Malignant Melanoma	*	*	*	*	*

Source: 2005 - Clinical and Health Outcomes Knowledge Base at www.nchod.nhs.uk, 2001-2004 - Northern & Yorkshire Cancer Registry and Information Service at www.nycris.org.uk

* Numbers of deaths for oral cancer and malignant melanoma are only shown for persons due to small numbers of deaths

3.5 Mortality from all cancers, numbers of deaths in Gateshead by type of cancer (cont.)

Definitions

All cancers – all malignant neoplasms, ICD10 C00-C97

Lung cancer – cancers of the trachea, bronchus and lung, ICD10 C33 & C34

Colorectal cancer – ICD10 C17-C21

Breast cancer – ICD10 C50

Stomach cancer – ICD10 C16

Prostate cancer – ICD10 C61

Oesophageal cancer – ICD10 C15

Cancer of the lip, oral cavity and pharynx – ICD10 C00-C14

Cervical cancer – ICD10 C53

Malignant melanoma – ICD10 C43

3.6 Mortality from all cancers, years of life lost in Gateshead by type of cancer

Years of life lost (YLL) is the total number of years of life lost under the age of 75. 75 years is indicative of average life expectancy across England. Figures are calculated by subtracting age of death from 75 and summing over all deaths under 75 years. Figures are pooled over three years and are shown in descending order of total years of life lost in 2003-2005.

Persons

	Average annual years of life lost		
	2001-2003	2002-2004	2003-2005
All Cancers	3644	3484	3230
Lung Cancer	1019	902	871
Breast Cancer	309	326	314
Colo-rectal Cancer	289	307	307
Stomach Cancer	135	132	147
Oesophageal Cancer	189	152	137
Prostate Cancer	89	63	60

Source: Clinical and Health Outcomes Knowledge Base at www.nchod.nhs.uk

Males

	Average annual years of life lost		
	2001-2003	2002-2004	2003-2005
All Cancers	2155	1965	1743
Lung Cancer	661	565	502
Colo-rectal Cancer	206	199	202
Oesophageal Cancer	142	111	98
Stomach Cancer	90	86	86
Prostate Cancer	89	63	60
Breast Cancer	-	-	-

Source: Clinical and Health Outcomes Knowledge Base at www.nchod.nhs.uk

Females

	Average annual years of life lost		
	2001-2003	2002-2004	2003-2005
All Cancers	1489	1518	1487
Lung Cancer	359	337	370
Breast Cancer	309	326	314
Colo-rectal Cancer	83	108	106
Stomach Cancer	45	46	61
Oesophageal Cancer	47	41	40
Prostate Cancer	-	-	-

Source: Clinical and Health Outcomes Knowledge Base at www.nchod.nhs.uk

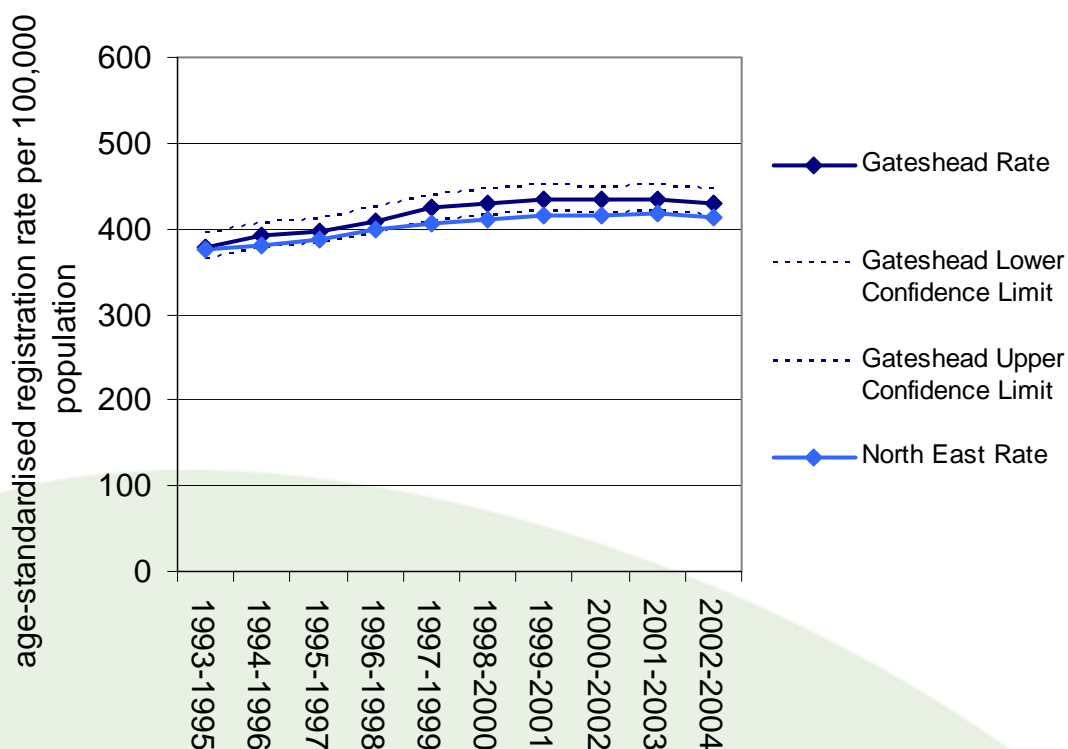
3.7 Incidence of all cancers, directly age-standardised registration rate, people of all ages

Directly age-standardised registration rate (DRR) per 100,000 population due to all cancers (ICD10 C00-C97 excl. C44 non-melanoma skin cancers) among people of all ages. The rate is standardised using the European standard population.

Persons

Year	Gateshead Cases per year	Gateshead Rate	Gateshead Lower Confidence Limit	Gateshead Upper Confidence Limit	North East Rate
1993-1995	933	379	364	394	377
1994-1996	977	392	377	407	381
1995-1997	991	397	382	411	387
1996-1998	1023	410	395	425	400
1997-1999	1052	424	409	440	406
1998-2000	1075	431	415	446	412
1999-2001	1085	435	420	451	415
2000-2002	1094	434	418	449	416
2001-2003	1106	435	420	451	417
2002-2004	1102	430	414	445	412

Source: Northern & Yorkshire Cancer Registry and Information Service at www.nycris.org.uk

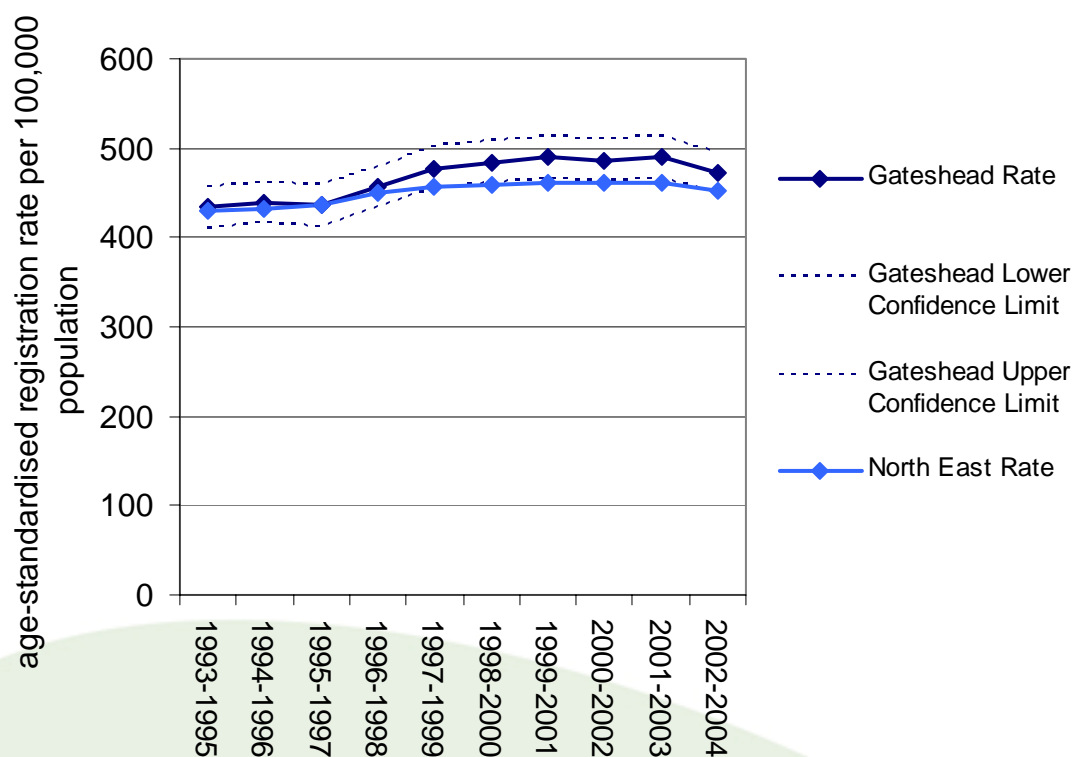


3.7 Incidence of all cancers, directly age-standardised registration rate, people of all ages (cont.)

Males

Year	Gateshead Cases per year	Gateshead Rate	Gateshead Lower Confidence Limit	Gateshead Upper Confidence Limit	North East Rate
1993-1995	478	433	411	456	430
1994-1996	488	439	417	462	431
1995-1997	488	435	413	458	436
1996-1998	516	457	434	480	450
1997-1999	539	477	454	501	456
1998-2000	547	484	461	508	459
1999-2001	554	490	466	513	461
2000-2002	558	486	463	510	461
2001-2003	572	490	466	513	461
2002-2004	556	472	449	495	451

Source: Northern & Yorkshire Cancer Registry and Information Service at www.nycris.org.uk

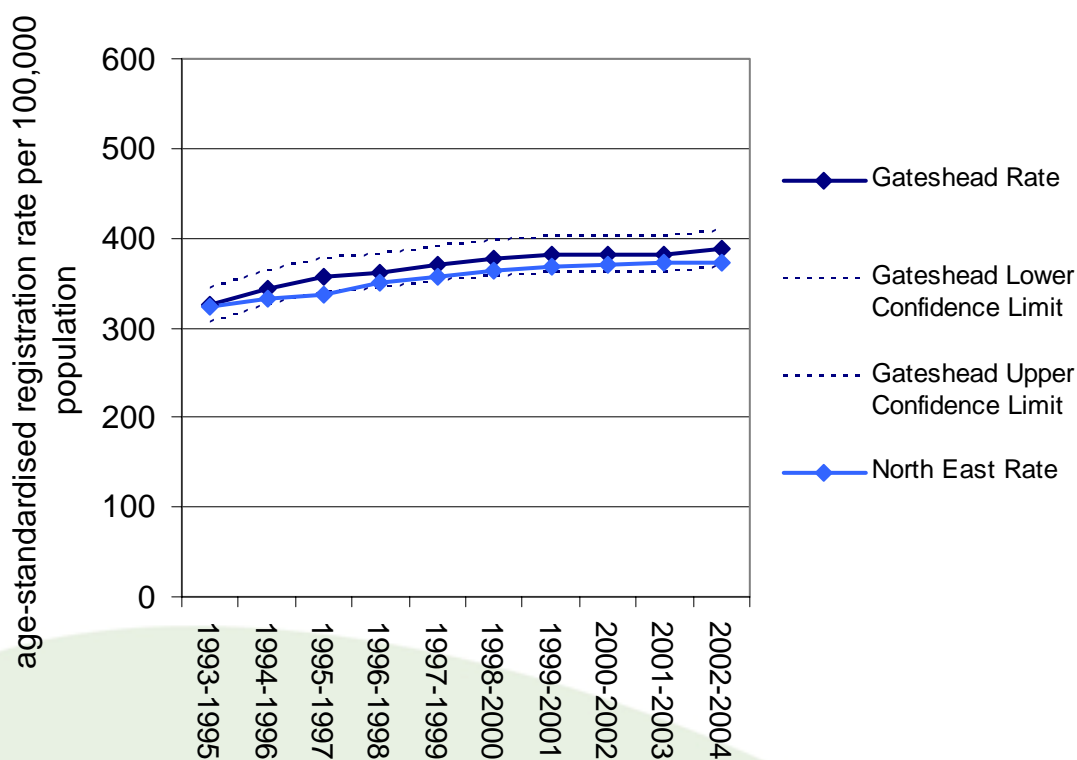


3.7 Incidence of all cancers, directly age-standardised registration rate, people of all ages (cont.)

Females

Year	Gateshead Cases per year	Gateshead Rate	Gateshead Lower Confidence Limit	Gateshead Upper Confidence Limit	North East Rate
1993-1995	455	325	306	343	323
1994-1996	489	345	326	363	332
1995-1997	503	358	338	377	337
1996-1998	507	362	343	381	350
1997-1999	513	371	352	391	357
1998-2000	527	377	357	397	364
1999-2001	531	381	361	400	368
2000-2002	537	382	362	401	370
2001-2003	534	381	361	401	373
2002-2004	546	387	367	407	373

Source: Northern & Yorkshire Cancer Registry and Information Service at www.nycris.org.uk



3.8 Incidence of all cancers, registrations in Gateshead by type of cancer

All diagnosed cancers are registered with regional cancer registries. Gateshead is part of the area covered by the Northern & Yorkshire Cancer Registry and Information Service (NYCRIS), based in Leeds. The service has a website at www.nycris.org.uk. Figures below are for the most commonly diagnosed types of cancer and are listed in descending order of number of registrations in 2004, the most recent year for which data is currently available.

Persons

	Number of registrations			
	2001	2002	2003	2004
All Cancers	1331	1377	1393	1355
Lung Cancer	210	192	202	186
Breast Cancer	*	*	*	*
Colo-rectal Cancer	135	138	145	151
Prostate Cancer	115	126	120	100
Stomach Cancer	42	59	38	50
Cancer of the lip, oral cavity and pharynx	18	22	18	27
Malignant Melanoma	26	30	23	17
Oesophageal Cancer	32	31	32	16
Cervical Cancer	12	9	8	10

Source: Northern & Yorkshire Cancer Registry and Information Service at www.nycris.org.uk

* Due to small numbers of breast cancer registrations among males, figures are only shown for females

Males

	Number of registrations			
	2001	2002	2003	2004
All Cancers	686	682	734	686
Lung Cancer	131	112	111	111
Prostate Cancer	115	126	120	100
Colo-rectal Cancer	76	72	86	89
Stomach Cancer	22	40	22	26
Cancer of the lip, oral cavity and pharynx	9	16	**	16
Oesophageal Cancer	19	18	19	10
Malignant Melanoma	10	15	14	5
Breast Cancer	*	*	*	*

Source: Northern & Yorkshire Cancer Registry and Information Service at www.nycris.org.uk

* Due to small numbers of breast cancer registrations among males, figures are only shown for females

** Figure not shown due to small numbers of registrations

3.8 Incidence of all cancers, number of registrations by type of cancer (cont.)

Females

	Number of registrations			
	2001	2002	2003	2004
All Cancers	645	695	659	669
Breast Cancer	128	146	166	165
Lung Cancer	79	80	91	75
Colo-rectal Cancer	59	66	59	62
Stomach Cancer	20	19	16	24
Malignant Melanoma	16	15	9	12
Cancer of the lip, oral cavity and pharynx	9	6	**	11
Cervical Cancer	12	9	8	10
Oesophageal Cancer	13	13	13	6

Source: Northern & Yorkshire Cancer Registry and Information Service at www.nycris.org.uk

** Figure not shown due to small numbers of registrations

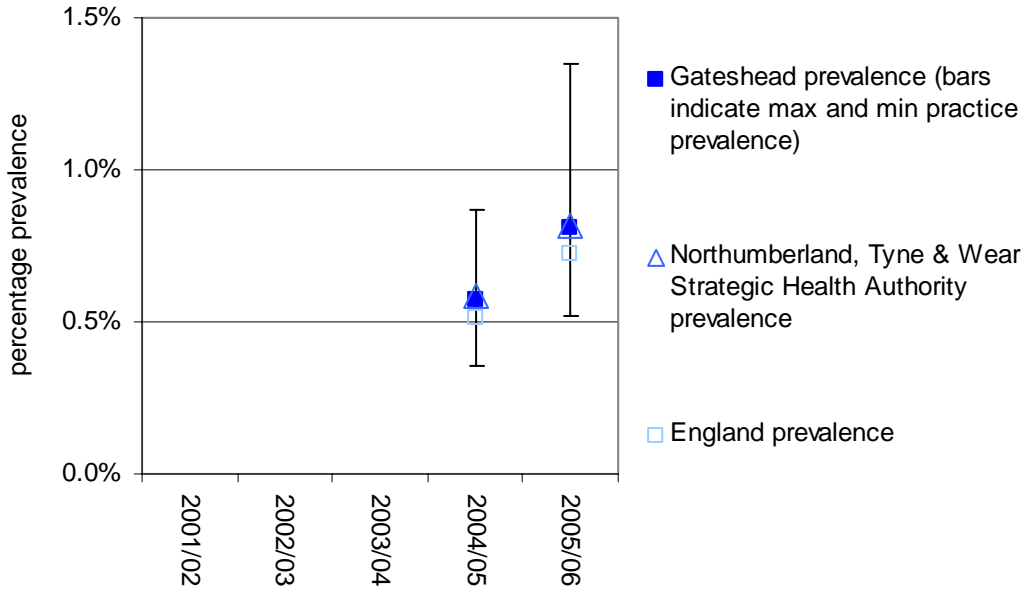
3.9 Prevalence of all cancers within primary care

Unadjusted⁵ prevalence of all cancers among people of all ages.

Year	Gateshead					NTW StHA	England
	no. on disease register	prevalence	minimum practice prevalence	maximum practice prevalence	practice prevalence interquartile range	prevalence	prevalence
2001/02	n/a	n/a	n/a	n/a	n/a	n/a	n/a
2002/03	n/a	n/a	n/a	n/a	n/a	n/a	n/a
2003/04	n/a	n/a	n/a	n/a	n/a	n/a	n/a
2004/05	1164	0.57%	0.36%	0.87%	0.13%	0.59%	0.51%
2005/06	1650	0.81%	0.52%	1.35%	0.29%	0.82%	0.72%

Source: NHS Information Centre at www.ic.nhs.uk, prevalence is calculated from a census of primary care records at the financial year end.

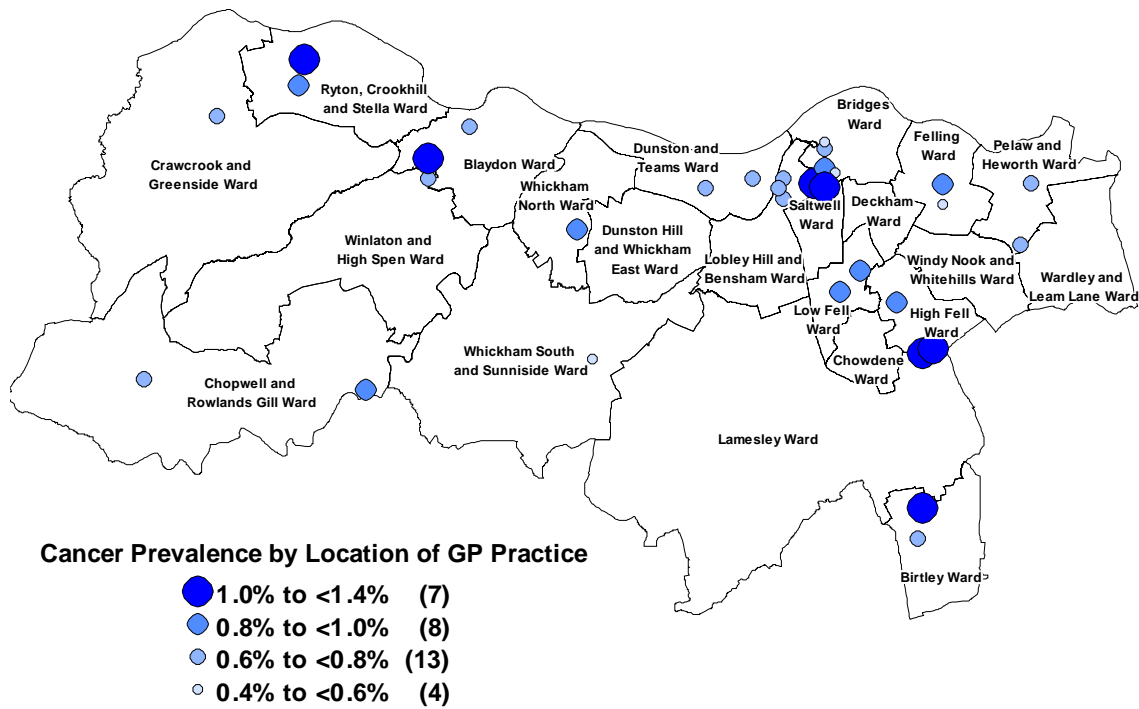
n/a = not available, NTW StHA = Northumberland, Tyne & Wear Strategic Health Authority



⁵ Unadjusted prevalence is the number of people registered with a Gateshead GP with a diagnosis of cancer (excluding non-melanotic skin cancers) expressed as a percentage of the total number of people registered with a Gateshead GP.

3.10 Prevalence of all cancers by location of GP practice

Prevalence data down to GP practice level is now published on the NHS Information Centre website (see link below). The map below shows levels of prevalence by location of GP practice, with a larger dot in a darker shade of blue representing higher prevalence. This measure is not perfect as GP practice lists are typically drawn from a wide geographical area and overlap, particularly in central Gateshead. Also figures are unadjusted prevalence i.e. they are not adjusted to compensate for variations in the age or sex composition of each GP practice population.



Source: NHS Information Centre at www.ic.nhs.uk/qof

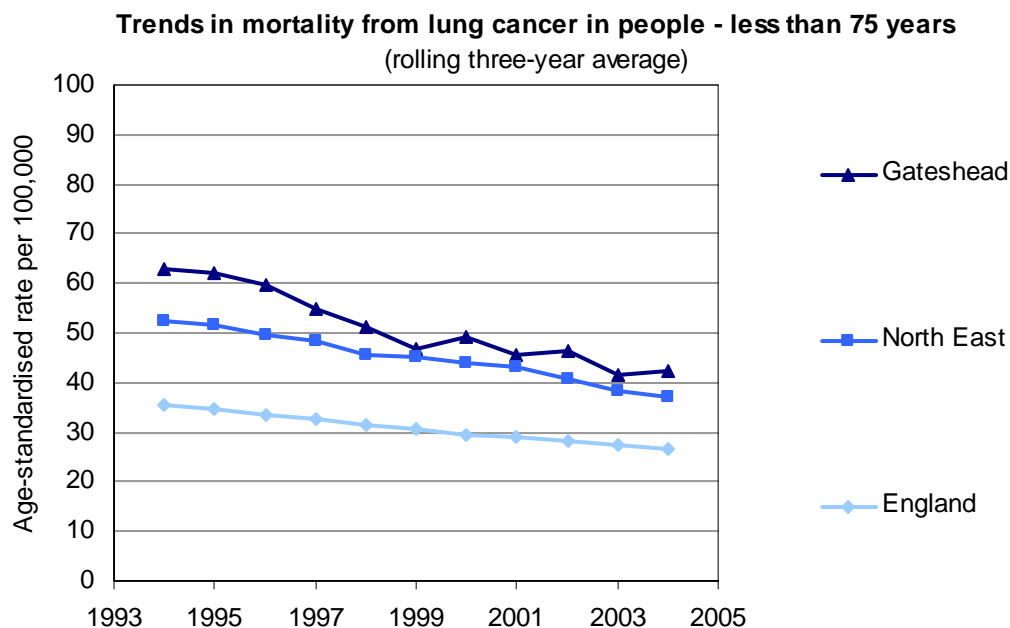
Lung Cancer

3.11 Mortality from lung cancer, directly age-standardised mortality rates, people under 75 years

Directly age-standardised mortality rate (DMR) due to lung cancer (ICD10 C33 & C34), three year pooled.

		2003-05 (Pooled)			
		No. of deaths	DSR	Confidence Interval	
				Lower	Upper
Gateshead	Males	172	52.6	44.7	60.5
	Females	116	33.1	26.9	39.2
	Persons	288	42.2	37.3	47.2
North East	Males	1855	44.3	42.2	46.3
	Females	1389	30.5	28.9	32.1
	Persons	3244	37.0	35.8	38.3
England	Males	26127	33.8	33.4	34.3
	Females	16641	20.1	19.8	20.5
	Persons	42768	26.7	26.5	27.0

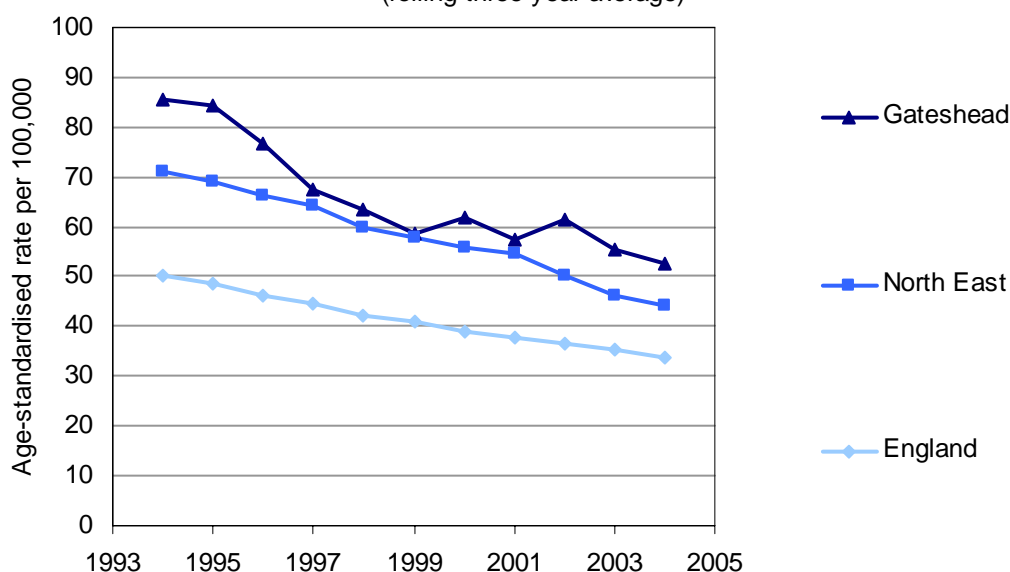
Source: Clinical and Health Outcomes Knowledge Base at www.nchod.nhs.uk



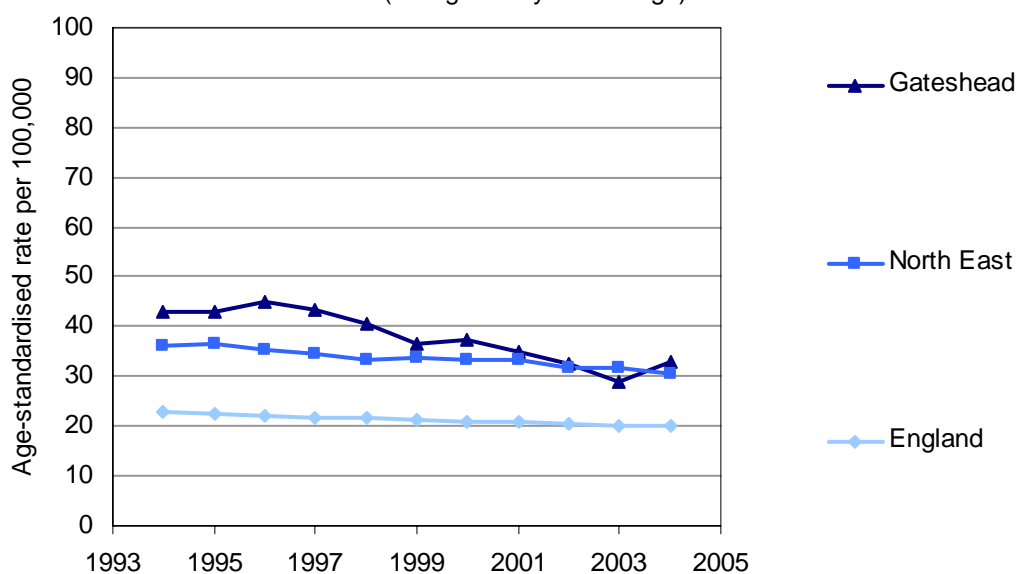
Inequalities indicator – in 1996 the Gateshead mortality rate due to lung cancer among people under 75 years was 79% higher than the rate for England. In 2004 it was only 58% higher. The health inequalities gap between Gateshead and England is getting smaller but the mortality rate in Gateshead is still much higher than the rate for England. In real terms this equates to an additional 36 deaths each year.

3.11 Mortality from lung cancer, directly age-standardised mortality rates, people under 75 years (cont.)

Trends in mortality from lung cancer in males - less than 75 years
(rolling three-year average)



Trends in mortality from lung cancer in females - less than 75 years
(rolling three-year average)



Local neighbours at a glance

Directly standardised mortality rate per 100,000 population among people ages under 75 due to lung cancer, 2003-2005

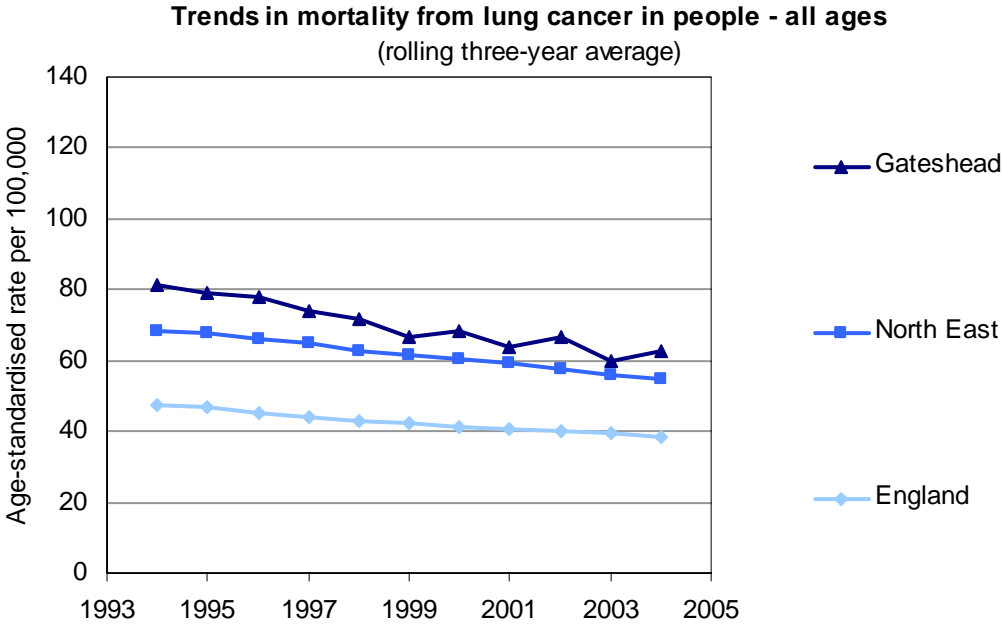
PCT	Rate
Newcastle PCT	44.3
Gateshead PCT	42.2
North Tyneside PCT	39.4
South Tyneside PCT	43.4
Sunderland Teaching PCT	34.1
Northumberland Care Trust	29.2

3.12 Mortality from lung cancer, directly age-standardised mortality rates, people of all ages

Directly age-standardised mortality rate (DMR) due to lung cancer (ICD10 C33 & C34), three year pooled.

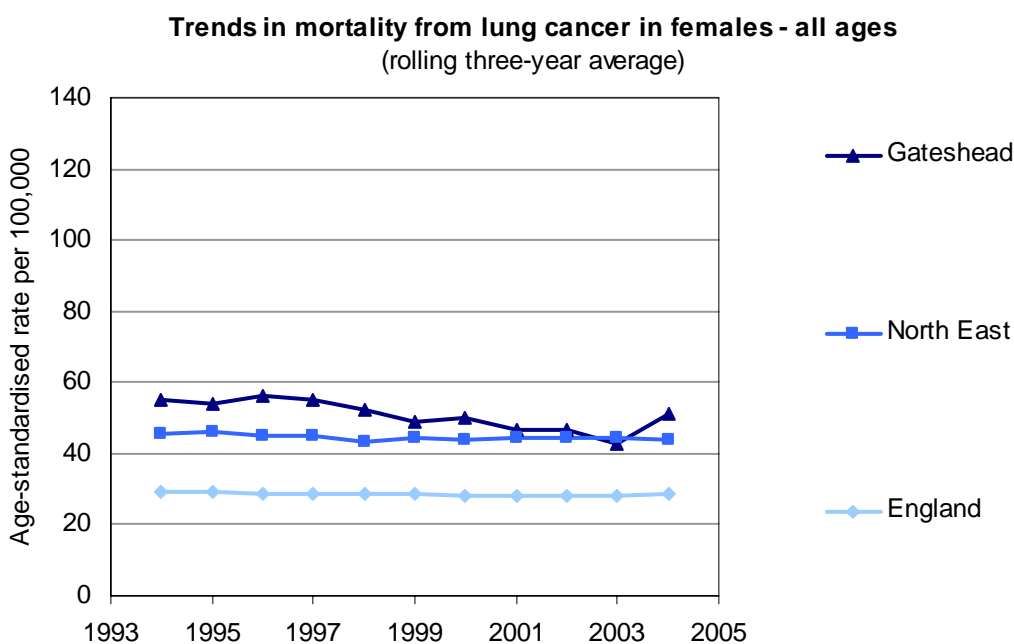
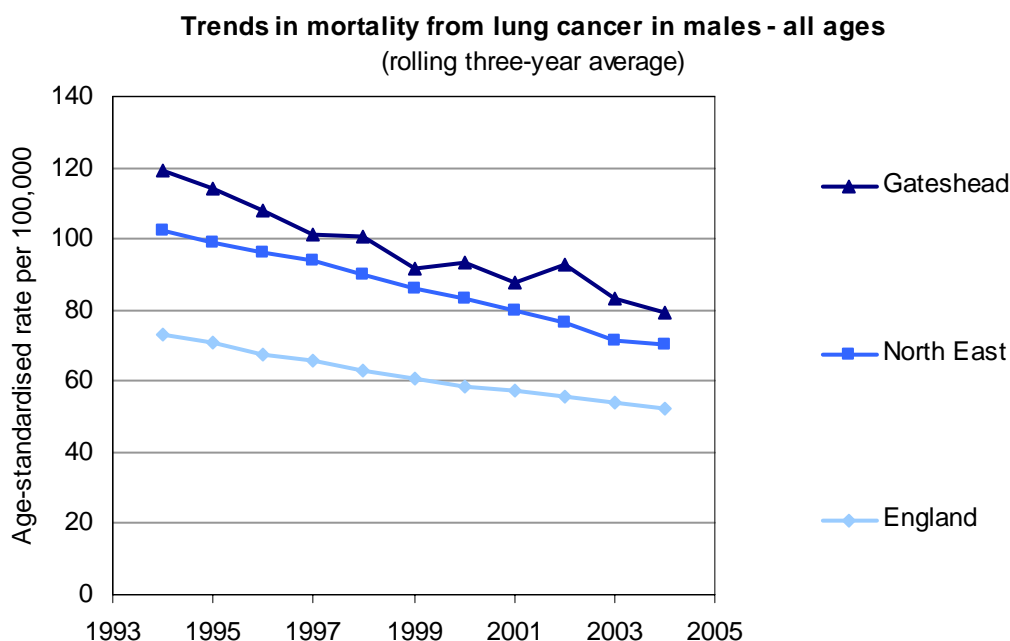
		2003-05 (Pooled)			
		No. of deaths	DSR	Confidence Interval	
				Lower	Upper
Gateshead	Males	291	79.4	70.1	88.8
	Females	251	51.1	44.3	57.8
	Persons	542	62.9	57.4	68.4
North East	Males	3372	70.1	67.6	72.5
	Females	2730	44.0	42.3	45.8
	Persons	6102	54.9	53.4	56.3
England	Males	47501	52.1	51.6	52.5
	Females	32703	28.4	28.1	28.8
	Persons	80204	38.6	38.4	38.9

Source: Clinical and Health Outcomes Knowledge Base at www.nchod.nhs.uk



Inequalities indicator – in 1996 the Gateshead mortality rate due to lung cancer among people of all ages was 72% higher than the rate for England. In 2004 it was only 63% higher. The health inequalities gap between Gateshead and England is narrowing but the mortality rate in Gateshead is still much higher than the rate for England. In real terms this equates to an additional 46 deaths each year.

3.12 Mortality from lung cancer, directly age-standardised mortality rates, people all ages (cont.)



Local neighbours at a glance

Directly standardised mortality rate per 100,000 population among people ages under 75 due to lung cancer, 2003-2005

PCT	Rate
Newcastle PCT	63.6
Gateshead PCT	62.9
South Tyneside PCT	62.4
North Tyneside PCT	57.5
Sunderland Teaching PCT	52.3
Northumberland Care Trust	44.8

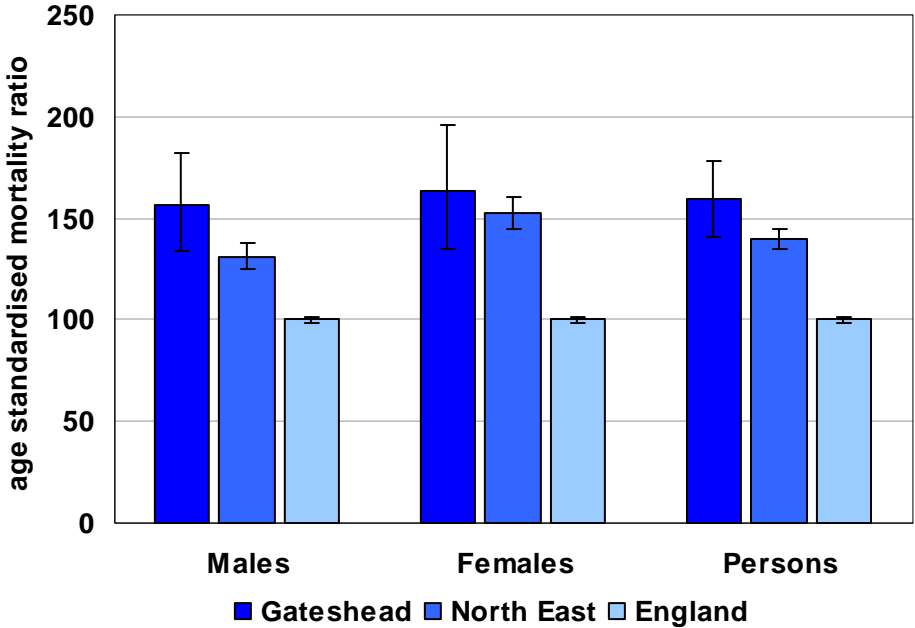
3.13 Mortality from lung cancer, indirectly age-standardised mortality ratios, people under 75 years

Indirectly age-standardised mortality ratio (SMR) due to lung cancer (ICD10 C33 & C34), three year pooled.

		2003-05 (Pooled)			
		No. of deaths	SMR	Confidence Interval	
				Lower	Upper
Gateshead	Males	172	156	134	182
	Females	116	163	135	195
	Persons	288	159	141	178
North East	Males	1,855	131	125	137
	Females	1,389	153	145	161
	Persons	3,244	140	135	145
England	Males	26,127	100	99	101
	Females	16,641	100	98	102
	Persons	42,768	100	99	101

Source: Clinical and Health Outcomes Knowledge Base at www.nchod.nhs.uk

**Mortality from lung cancer (ICD10 C33-C34) 2003-05 (Pooled)
Less than 75 years**



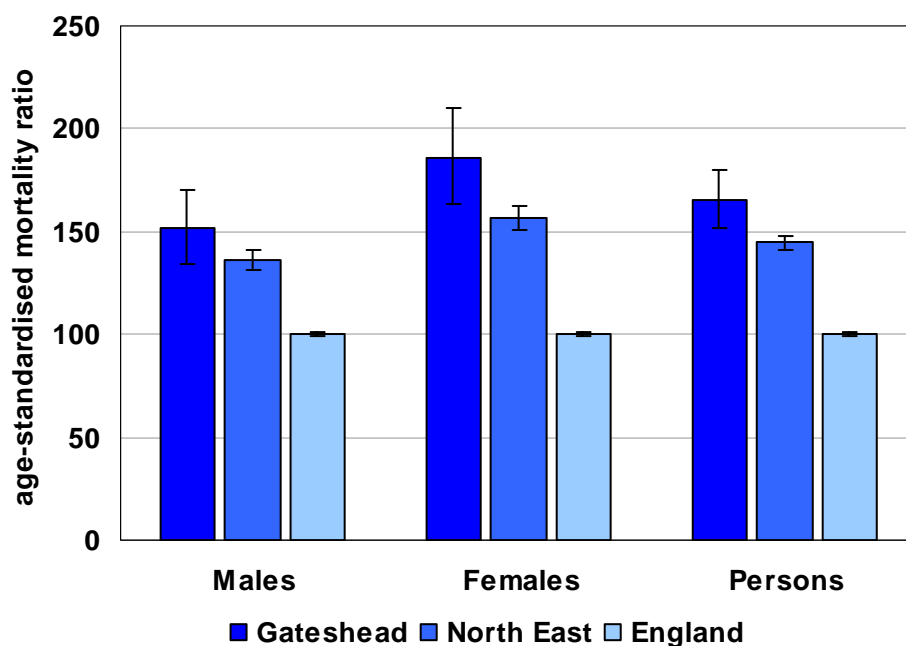
3.14 Mortality from lung cancer, indirectly age-standardised mortality ratios, people of all ages

Indirectly age-standardised mortality ratio (SMR) due to lung cancer (ICD10 C33 & C34) among people of all ages, three year pooled.

		2003-05 (Pooled)			
		No. of deaths	SMR	Confidence Interval	
				Lower	Upper
Gateshead	Males	291	151	135	170
	Females	251	186	164	211
	Persons	542	166	152	180
North East	Males	3,372	136	131	141
	Females	2,730	157	151	163
	Persons	6,102	145	141	148
England	Males	47,501	100	99	101
	Females	32,703	100	99	101
	Persons	80,204	100	99	101

Source: Clinical and Health Outcomes Knowledge Base at www.nchod.nhs.uk

Mortality from lung cancer (ICD10 C33-C34) 2003-05 (Pooled) All ages



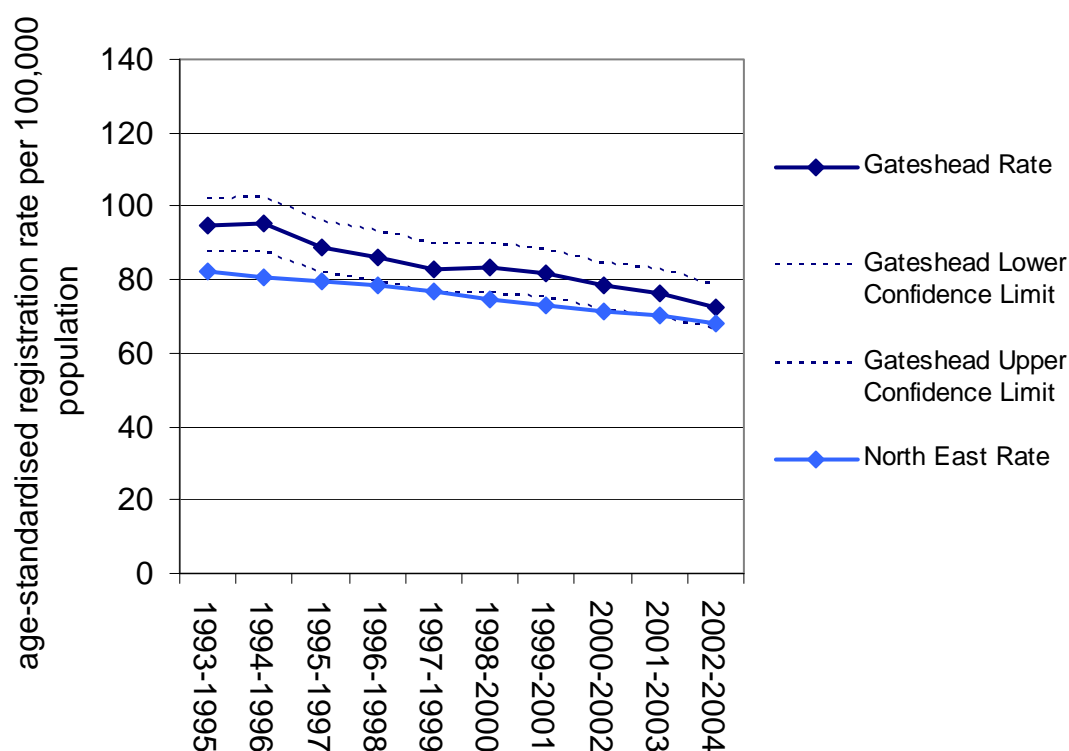
3.15 Incidence of lung cancer, directly age-standardised registration rate, people of all ages

Directly age-standardised registration rate per 100,000 population due to lung (ICD10 C33 & C34) among people of all ages. The rate is standardised using the European standard population.

Persons

Year	Gateshead Cases per year	Gateshead Rate	Gateshead Lower Confidence Limit	Gateshead Upper Confidence Limit	North East Rate
1993-1995	240	95	88	102	82
1994-1996	238	95	88	102	81
1995-1997	225	89	82	96	79
1996-1998	219	86	79	93	78
1997-1999	213	83	76	90	77
1998-2000	214	83	77	90	74
1999-2001	210	82	75	89	73
2000-2002	203	78	72	85	71
2001-2003	201	76	70	83	70
2002-2004	193	72	66	79	68

Source: Northern & Yorkshire Cancer Registry and Information Service at www.nycris.org.uk

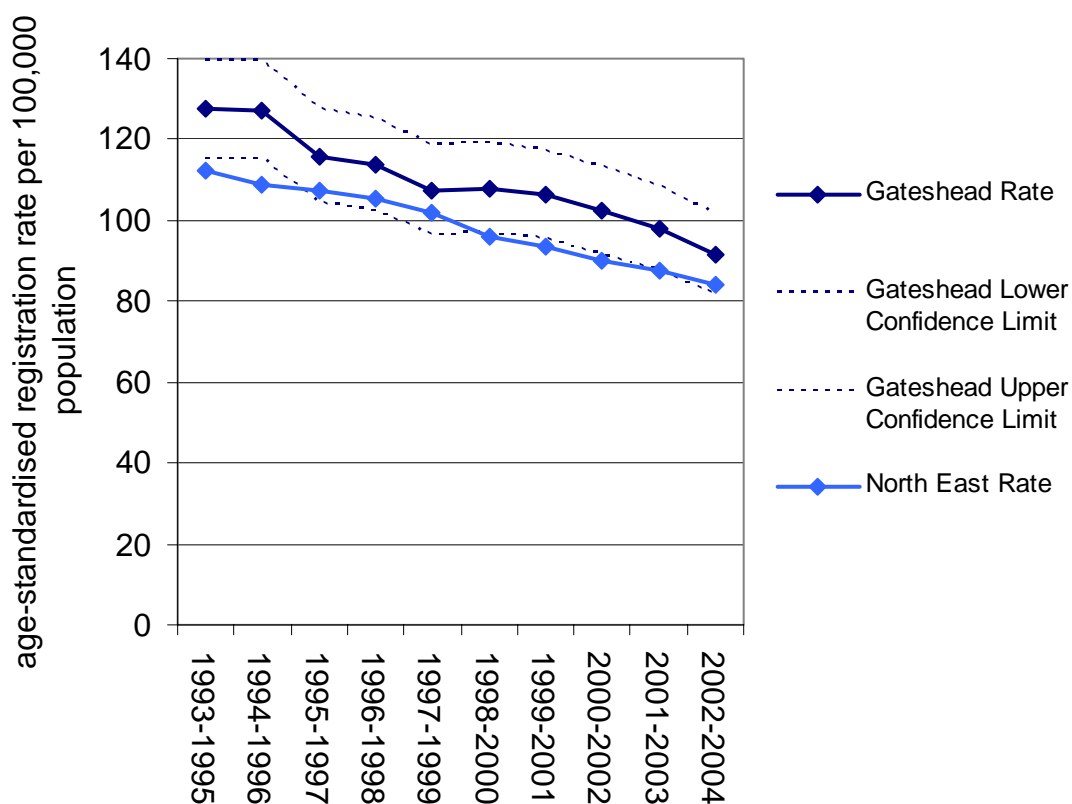


3.15 Incidence of lung cancer, directly age-standardised registration rate, people of all ages (cont.)

Males

Year	Gateshead Cases per year	Gateshead Rate	Gateshead Lower Confidence Limit	Gateshead Upper Confidence Limit	North East Rate
1993-1995	146	128	115	140	112
1994-1996	145	127	115	139	109
1995-1997	133	116	104	127	107
1996-1998	131	114	102	125	105
1997-1999	126	108	97	119	102
1998-2000	125	108	97	119	96
1999-2001	123	106	95	117	93
2000-2002	120	102	92	113	90
2001-2003	118	98	88	108	88
2002-2004	111	91	82	101	84

Source: Northern & Yorkshire Cancer Registry and Information Service at www.nycris.org.uk

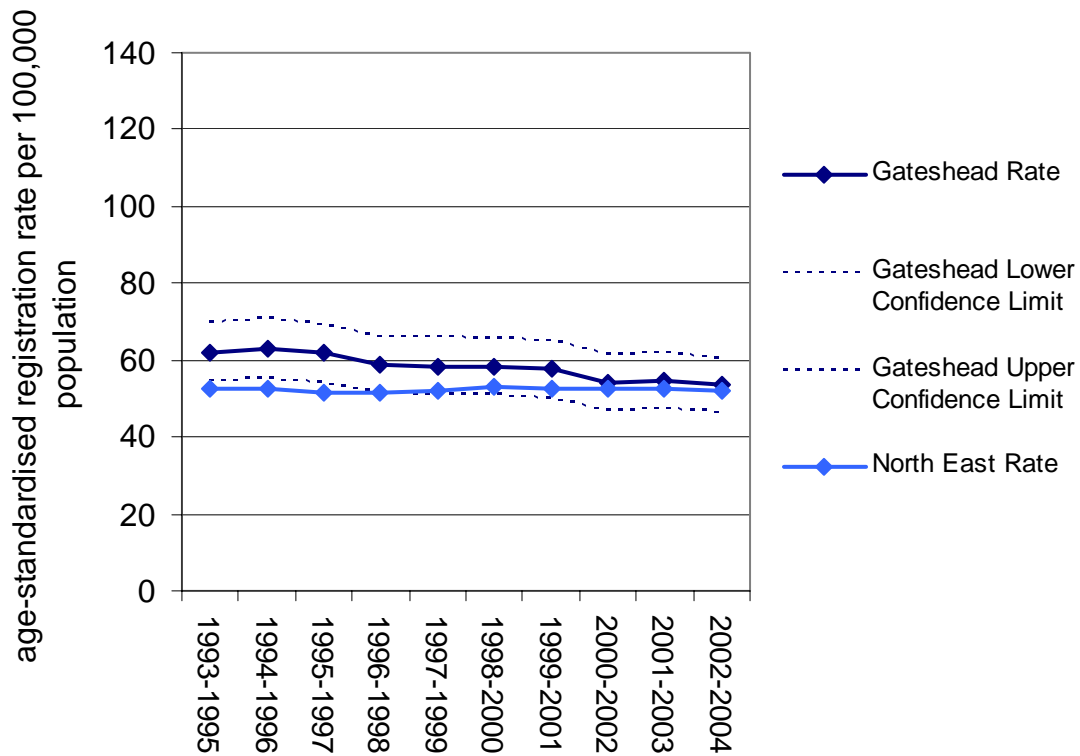


3.15 Incidence of lung cancer, directly age-standardised registration rate, people of all ages (cont.)

Females

Year	Gateshead Cases per year	Gateshead Rate	Gateshead Lower Confidence Limit	Gateshead Upper Confidence Limit	North East Rate
1993-1995	94	62	55	70	52
1994-1996	94	63	55	71	53
1995-1997	91	62	54	69	52
1996-1998	88	59	51	66	51
1997-1999	87	58	51	66	52
1998-2000	89	58	51	66	53
1999-2001	87	58	50	65	53
2000-2002	83	54	47	61	53
2001-2003	83	55	47	62	53
2002-2004	82	53	46	61	52

Source: Northern & Yorkshire Cancer Registry and Information Service at www.nycris.org.uk



3.16 Incidence of lung cancer, indirectly age-standardised registration ratio, people of all ages

Indirectly age-standardised registration ratio (SRR) due to lung cancer (ICD10 C33 & C34), three year pooled.

		2001-03* (Pooled)			
		Cases per year	SRR	Confidence Interval	
				Lower	Upper
Gateshead	Males	118	157	141	174
	Females	83	161	142	183
	Persons	201	159	146	172
North East	Males	1,345	140	135	144
	Females	1,017	154	149	160
	Persons	2,362	146	142	149
England	Males	18,351	100	99	101
	Females	12,305	100	99	101
	Persons	30,656	100	99	101

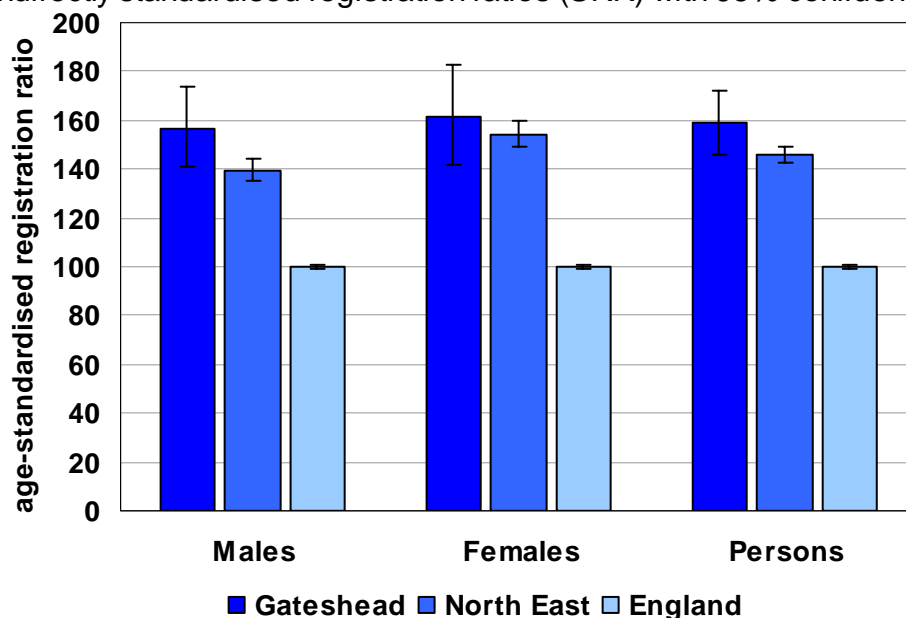
Source: Clinical and Health Outcomes Knowledge Base at www.nchod.nhs.uk

*Data on cancer registrations are gathered by the regional Cancer Registries. Ratios for 2001-03 are currently the most recent available figures that are published nationally.

** SRR = indirectly standardised registration ratio

Incidence of lung cancer (ICD10 C33-C34) 2001-03 (Pooled) All ages

Indirectly standardised registration ratios (SRR) with 95% confidence



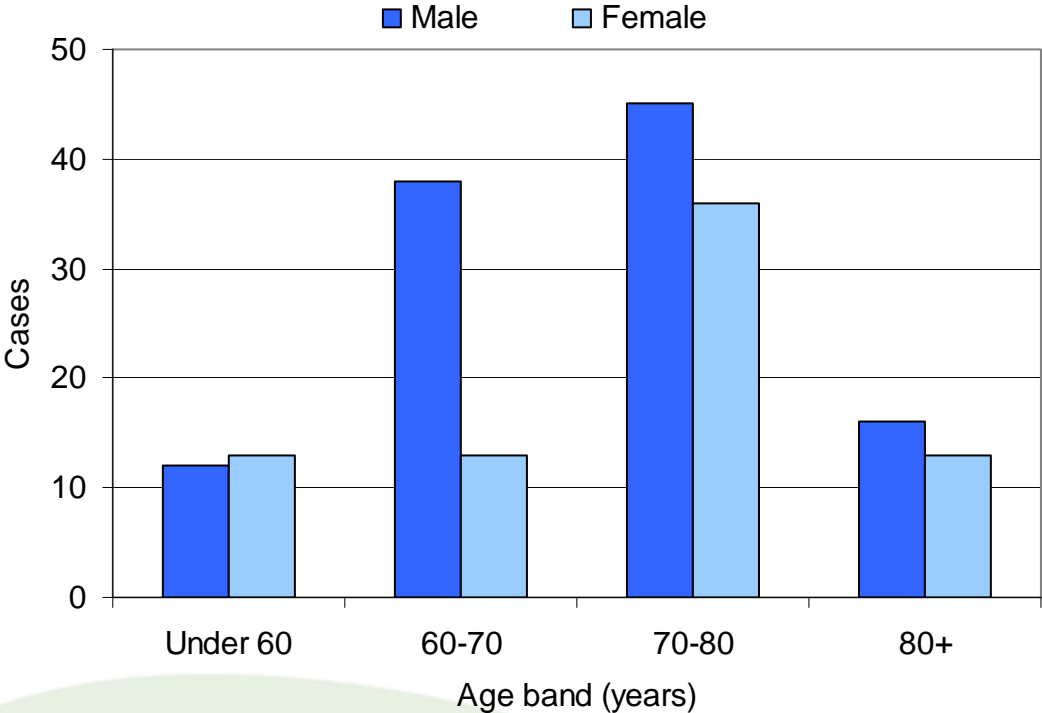
3.17 Lung cancer, number of registrations by age band

Number of lung cancer registrations (ICD10 C33 & C34) in Gateshead.

		2004 Age band (years)					
		All Ages	Under 60	60-69	70-79	80 and over	
Gateshead	Males	111	12	38	45	16	
	Females	75	13	13	36	13	
	Persons	186	25	51	81	29	

Source: Cancer Information Service, Northern & Yorkshire Cancer Registry and Information Service at www.nycris.org.uk

Lung Cancer (ICD10 C33 & C34) Registrations in Gateshead by Age Band, 2004



Colorectal Cancer

3.18 Mortality from colorectal cancer, indirectly age-standardised mortality ratio, people of all ages

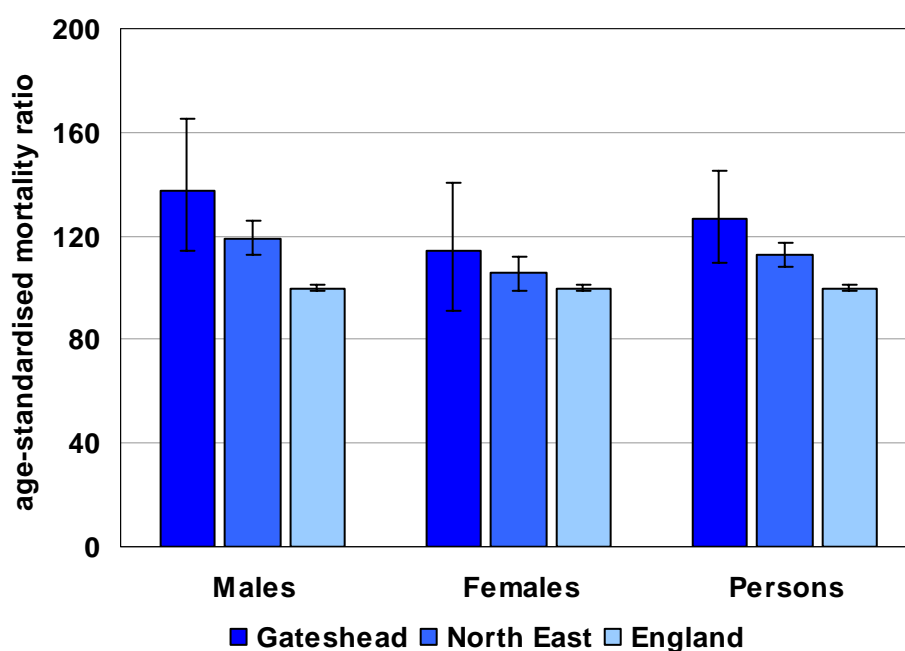
Indirectly age-standardised mortality ratio (SMR) due to colorectal cancer (ICD10 C17-C21), three year pooled.

		2003-05 (Pooled)			
		No. of deaths	SMR	Confidence Interval	
				Lower	Upper
Gateshead	Males	118	138	114	165
	Females	86	114	91	141
	Persons	204	127	110	145
North East	Males	1,323	119	113	126
	Females	1,032	106	99	112
	Persons	2,355	113	108	117
England	Males	21,449	100	99	101
	Females	18,803	100	99	101
	Persons	40,252	100	99	101

Source: Clinical and Health Outcomes Knowledge Base at www.nchod.nhs.uk

Mortality from colorectal cancer (ICD10 C17-C21) 2003-05 (Pooled) All ages

Indirectly standardised ratios (SMR) with 95% confidence intervals



3.19 Incidence of colorectal cancer, indirectly age-standardised registration ratio, people of all ages

Indirectly age-standardised registration ratio (SRR) due to colorectal cancer (ICD10 C17-C20), three year pooled.

		2001-03* (Pooled)			
		Cases per year	SRR	Confidence Interval	
				Lower	Upper
Gateshead	Males	78	121	106	138
	Females	61	110	95	127
	Persons	139	116	105	128
North East	Males	1,015	123	118	127
	Females	773	108	104	113
	Persons	1,788	116	113	119
England	Males	15,810	100	99	101
	Females	13,553	100	99	101
	Persons	29,363	100	99	101

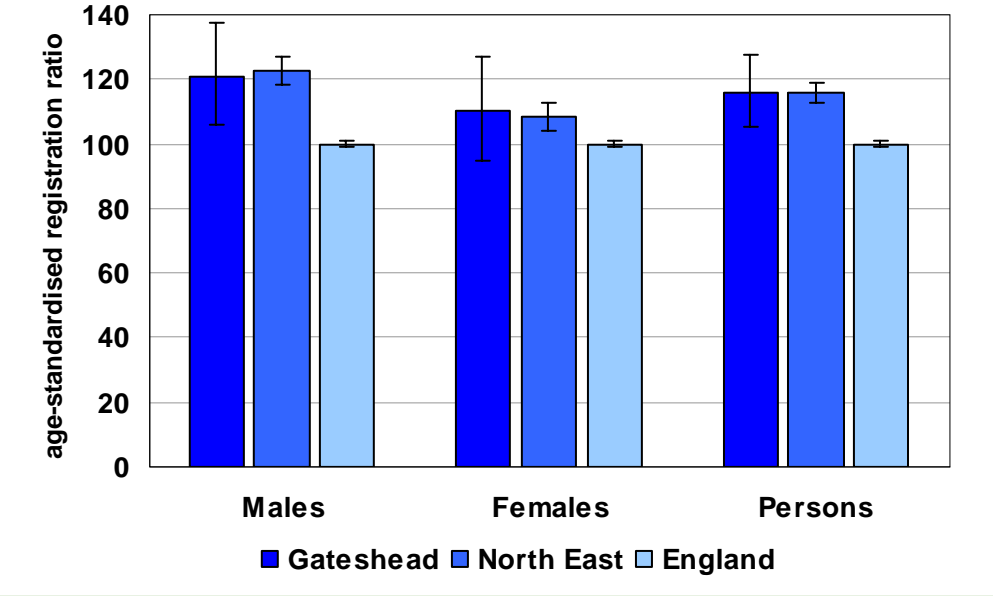
Source: Clinical and Health Outcomes Knowledge Base at www.nchod.nhs.uk

*Data on cancer registrations are gathered by the regional Cancer Registries. Ratios for 2001-03 are currently the most recent available figures that are published nationally.

** SRR = indirectly standardised registration ratio

Incidence of colorectal cancer (ICD10 C17-C21) 2001-03 (Pooled) All ages

Indirectly standardised registration ratios (SRR) with 95% confidence intervals



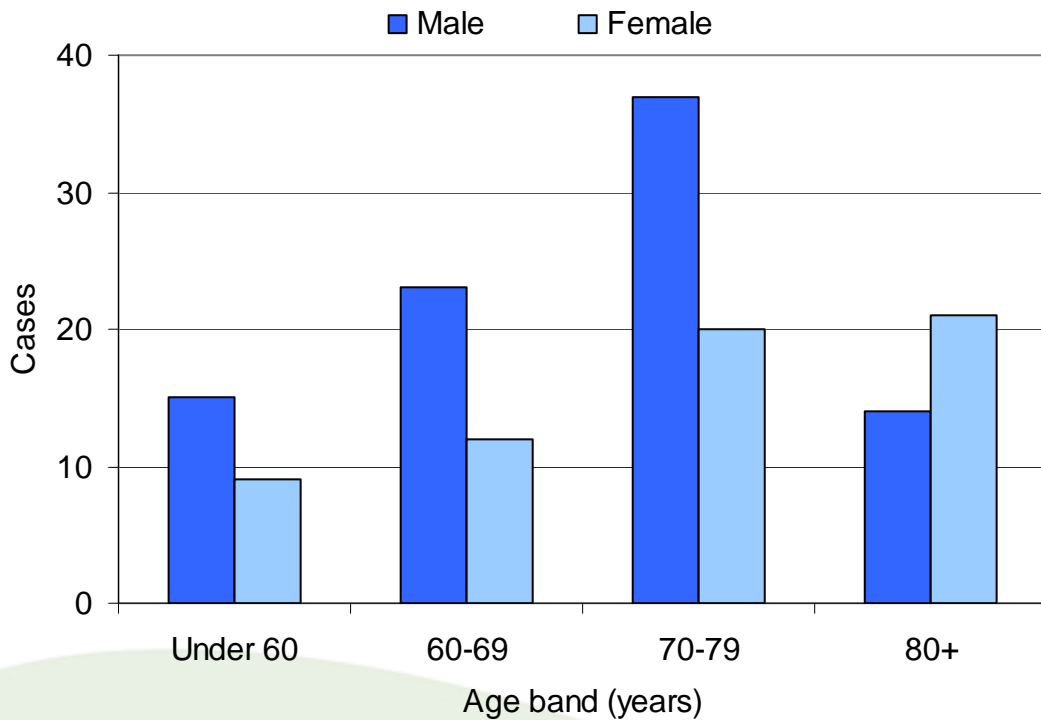
3.20 Colorectal cancer, number of registrations by age band

Number of colorectal cancer registrations (ICD10 C17-C21) in Gateshead by age band.

		2004				
		Age band (years)				
		All Ages	Under 60	60-69	70-79	80 and over
Gateshead	Males	89	15	23	37	14
	Females	62	9	12	20	21
	Persons	151	24	35	57	35

Source: Cancer Information Service, Northern & Yorkshire Cancer Registry and Information Service at www.nycris.org.uk

Colorectal Cancer (ICD10 C17-C21) Registrations in Gateshead by Age Band, 2004



Breast Cancer

3.21 Mortality from breast cancer, indirectly age-standardised mortality ratio, people under 75 years

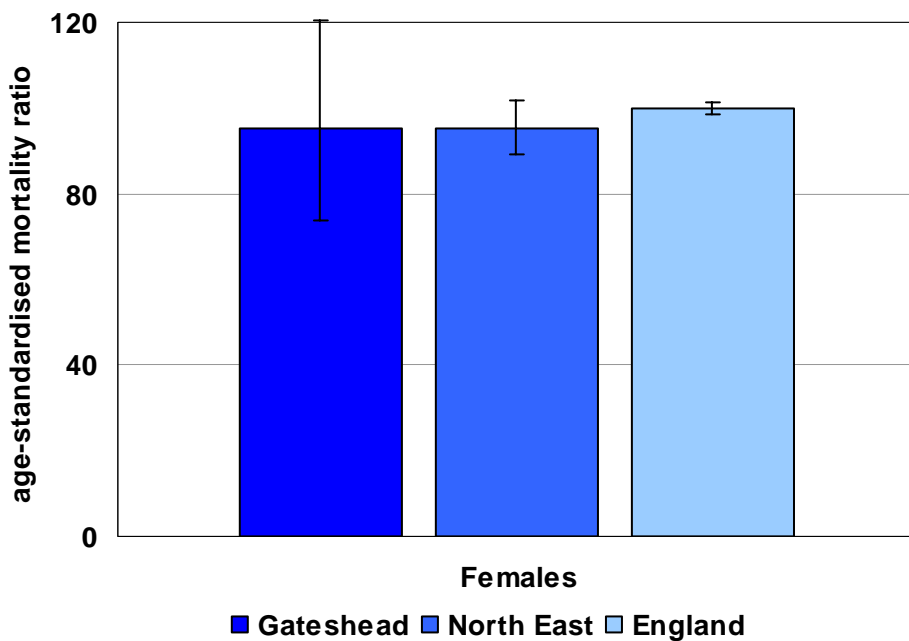
Indirectly age-standardised mortality ratio (SMR) due to breast cancer (ICD10 C50), three year pooled.

		2003-05 (Pooled)			
		No. of deaths	SMR	Confidence Interval	
				Lower	Upper
Gateshead	Females	68	95	74	121
North East	Females	886	95	89	102
England	Females	17,281	100	99	102

Source: Clinical and Health Outcomes Knowledge Base at www.nchod.nhs.uk

Mortality from breast cancer (ICD10 C50) 2003-05 (Pooled) Less than 75 years

Indirectly standardised ratios (SMR) with 95% confidence intervals



3.22 Mortality from breast cancer, indirectly age-standardised mortality ratio, people of all ages

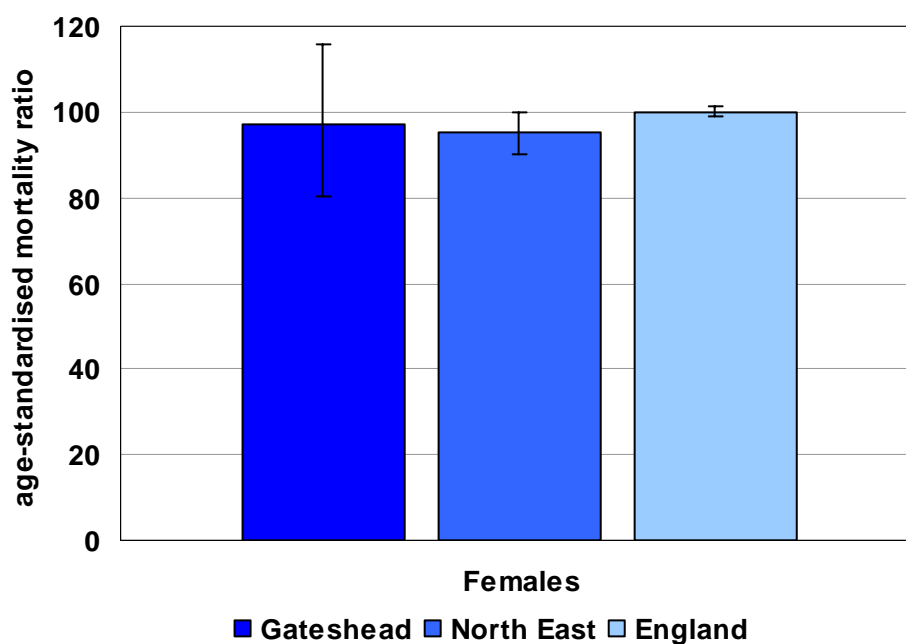
Indirectly age-standardised mortality ratio (SMR) due to breast cancer (ICD10 C50), three year pooled.

		2003-05 (Pooled)			
		No. of deaths	SMR	Confidence Interval	
				Lower	Upper
Gateshead	Females	121	97	80	116
North East	Females	1,543	95	90	100
England	Females	31,086	100	99	101

Source: Clinical and Health Outcomes Knowledge Base at www.nchod.nhs.uk

Mortality from breast cancer (ICD10 C50) 2003-05 (Pooled) All ages

Indirectly standardised ratios (SMR) with 95% confidence intervals



3.23 Incidence of breast cancer, indirectly age-standardised registration ratio, people of all ages

Indirectly age-standardised registration ratio (SRR) due to breast cancer (ICD10 C50), three year pooled.

		2001-03* (Pooled)			
		Cases per year	SRR**	Confidence Interval	
				Lower	Upper
Gateshead	Females	146	101	92	111
North East	Females	1,800	95	93	98
England	Females	35,618	100	99	101

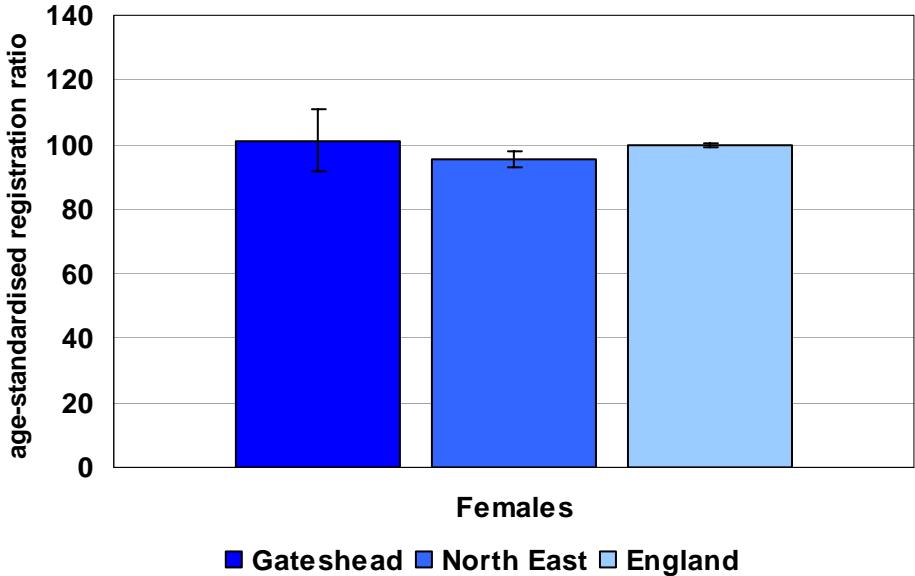
Source: Clinical and Health Outcomes Knowledge Base at www.nchod.nhs.uk

*Data on cancer registrations are gathered by the regional Cancer Registries. Ratios for 2001-03 are currently the most recent available figures that are published nationally.

** SRR = indirectly standardised registration ratio

Incidence of breast cancer (ICD10 C50) 2001-03 (Pooled) All ages

Indirectly standardised registration ratios (SRR) with 95% confidence intervals



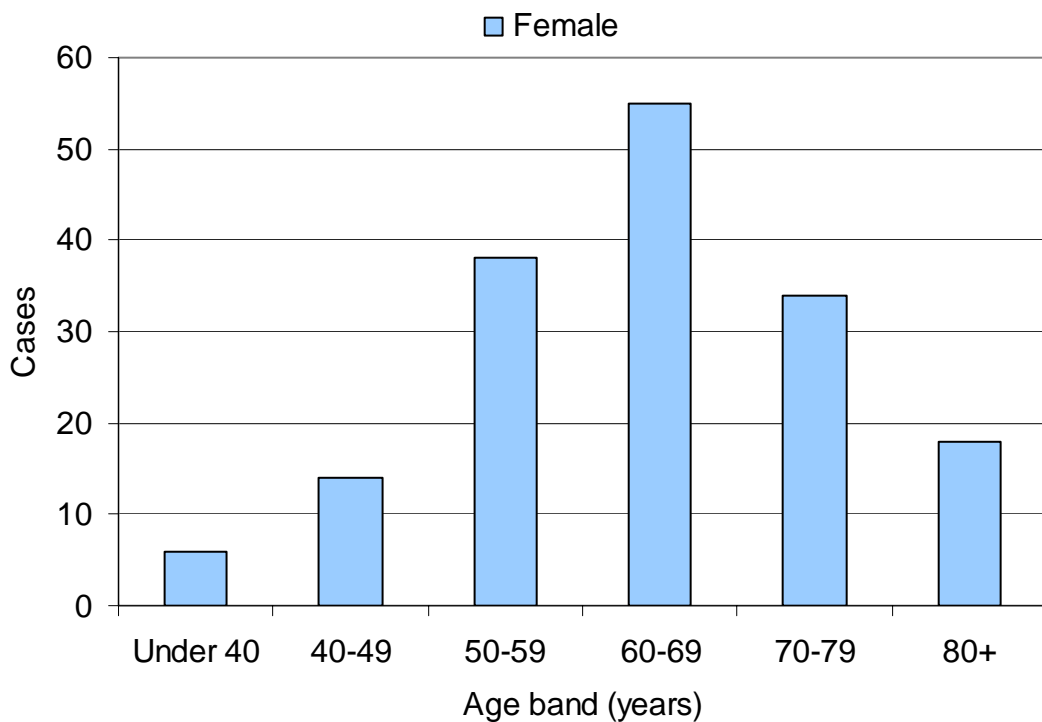
3.24 Breast cancer, number of registrations by age band

Number of breast cancer registrations (ICD10 C50) in Gateshead by age band.

		2004						
		Age band (years)						
		Total	Under 40	40-49	50-59	60-69	70-79	80+
Gateshead	Females	165	6	14	38	55	34	18

Source: Cancer Information Service, Northern & Yorkshire Cancer Registry and Information Service at www.nycris.org.uk

Breast Cancer (ICD10 C50) Registrations in Gateshead by Age Band, 2004

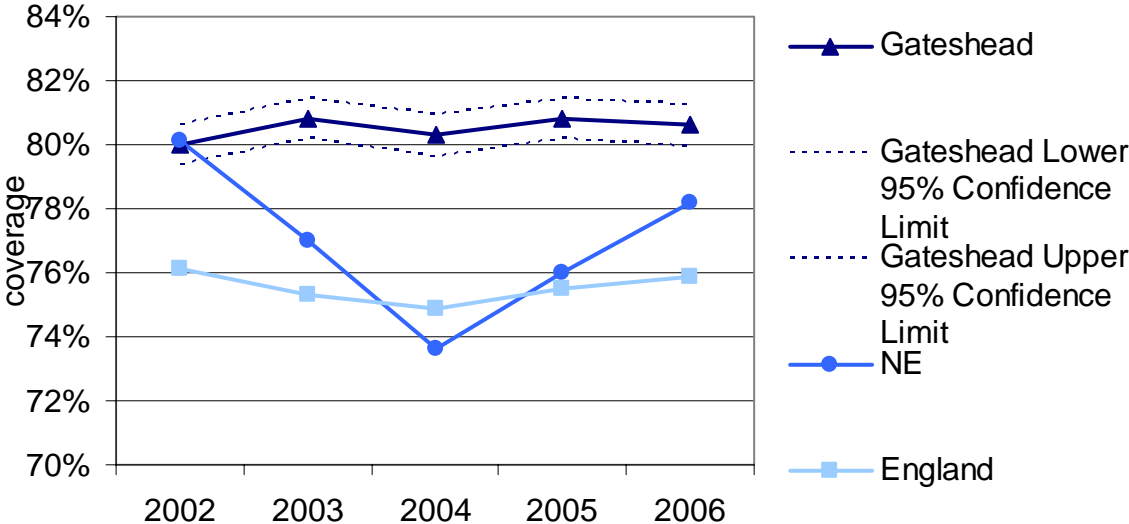


3.25 Coverage of breast screening among women ages 53 to 64 years

Coverage is calculated as the proportion of eligible women between 53 and 64 years of age that have had been screened in the past three years. The Department of Health has set a minimum standard of 70% coverage.

3 year period ending 31-Mar	Eligible women, 53-64 years Gateshead	Coverage Gateshead	Lower 95% Confidence Limit Gateshead	Upper 95% Confidence Limit Gateshead	Coverage NE	Coverage England
2002	14573	80.0%	80.6%	79.4%	80.1%	76.1%
2003	14525	80.8%	81.4%	80.2%	77.0%	75.3%
2004	14384	80.3%	80.9%	79.7%	73.6%	74.9%
2005	14412	80.8%	81.4%	80.2%	76.0%	75.5%
2006	14523	80.6%	81.2%	80.0%	78.2%	75.9%

Source: 2002 to 2004 - Department of Health at www.dh.gov.uk, 2005 & 2006 - Health & Social Care Information Centre at www.ic.nhs.uk



Stomach Cancer

3.26 Mortality from stomach cancer, indirectly age-standardised mortality ratios, people of all ages

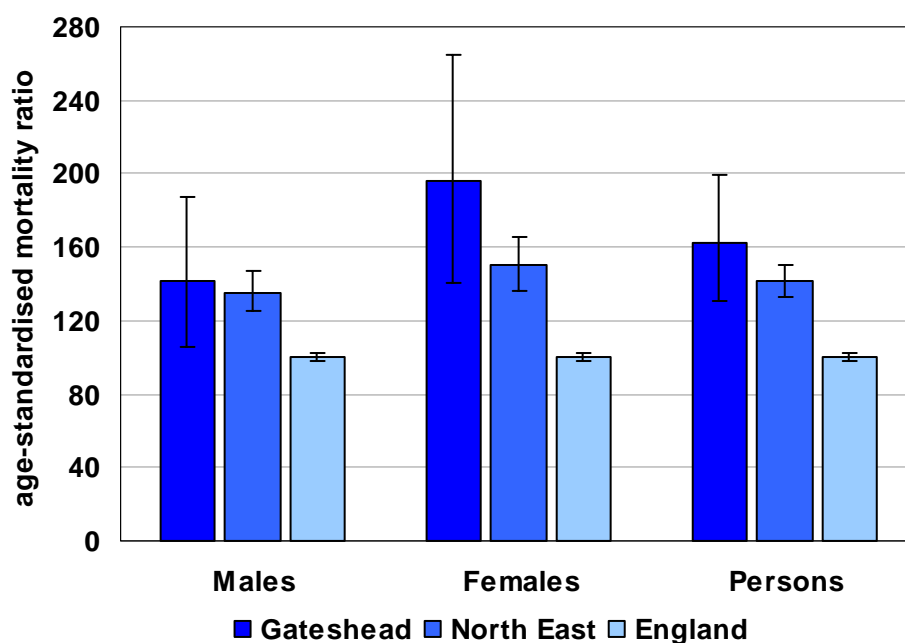
Indirectly age-standardised mortality ratio (SMR) due to stomach cancer (ICD10 C16), three year pooled.

		2003-05 (Pooled)			
		No. of deaths	SMR	Confidence Interval	
				Lower	Upper
Gateshead	Males	50	142	105	187
	Females	42	196	141	264
	Persons	92	162	131	199
North East	Males	618	136	125	147
	Females	417	150	136	165
	Persons	1,035	141	133	150
England	Males	8,808	100	98	102
	Females	5,358	100	97	103
	Persons	14,166	100	98	102

Source: Clinical and Health Outcomes Knowledge Base at www.nchod.nhs.uk

Mortality from stomach cancer (ICD10 C16) 2003-05 (Pooled) All ages

Indirectly standardised ratios (SMR) with 95% confidence intervals



3.27 Incidence of stomach cancer, indirectly age-standardised registration ratio, people of all ages

Indirectly age-standardised registration ratio (SRR) due to stomach cancer (ICD10 C16), three year pooled.

		2001-03* (Pooled)			
		Cases per year	SRR	Confidence Interval	
				Lower	Upper
Gateshead	Males	28	149	119	185
	Females	18	173	131	226
	Persons	46	158	133	186
North East	Males	331	137	129	146
	Females	199	147	136	160
	Persons	531	141	134	148
England	Males	4,623	100	98	102
	Females	2,586	100	98	102
	Persons	7,208	100	99	101

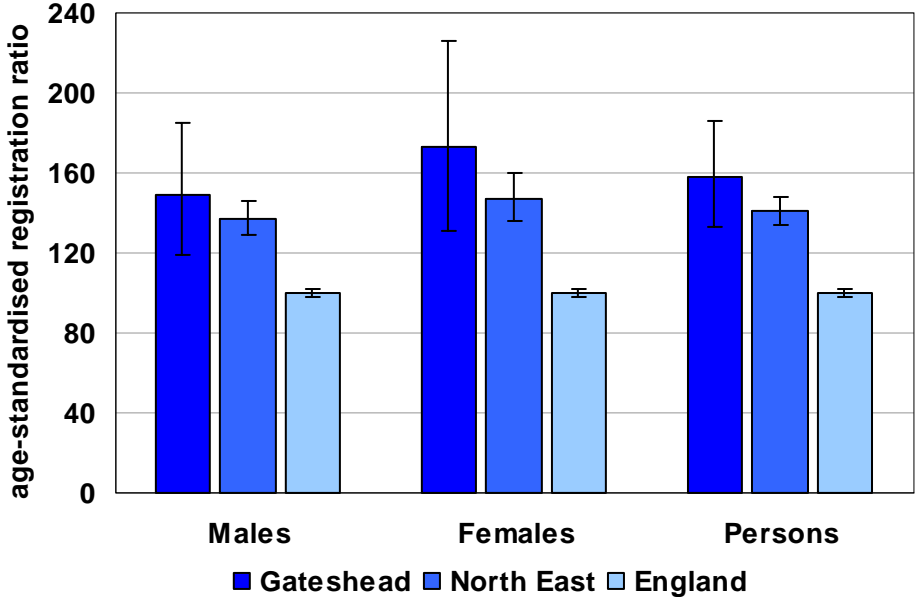
Source: Clinical and Health Outcomes Knowledge Base at www.nchod.nhs.uk

*Data on cancer registrations are gathered by the regional Cancer Registries. Ratios for 2001-03 are currently the most recent available figures that are published nationally.

** SRR = indirectly standardised registration ratio

Incidence of stomach cancer (ICD10 C16) 2001-03 (Pooled) All ages

Indirectly standardised registration ratios (SRR) with 95% confidence intervals



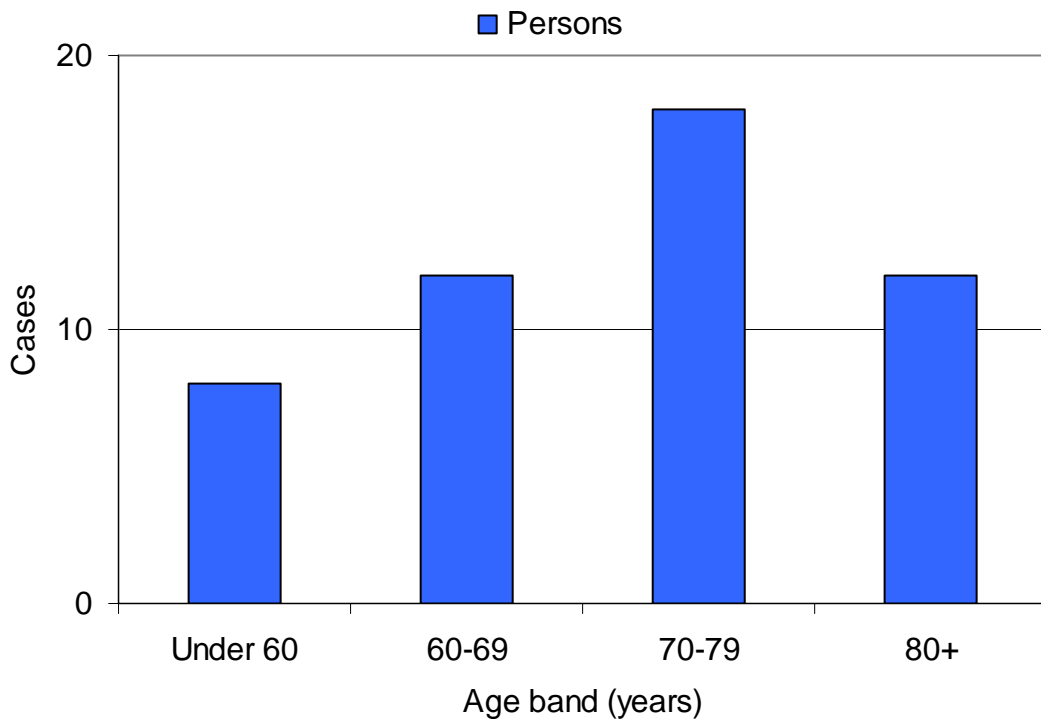
3.28 Stomach cancer, number of registrations by age band

Number of stomach cancer (ICD10 C16) registrations in Gateshead by age band. Due to small numbers of registrations, numbers are shown for persons only.

		2004				
		Age band (years)				
		All Ages	Under 60	60-69	70-79	80 and over
Gateshead	Persons	50	8	12	18	12

Source: Cancer Information Service, Northern & Yorkshire Cancer Registry and Information Service at www.nycris.org.uk

Stomach Cancer (ICD10 C16) Registrations in Gateshead by Age Band, 2004



Prostate Cancer

3.29 Mortality from prostate cancer, indirectly age-standardised mortality ratio, people of all ages

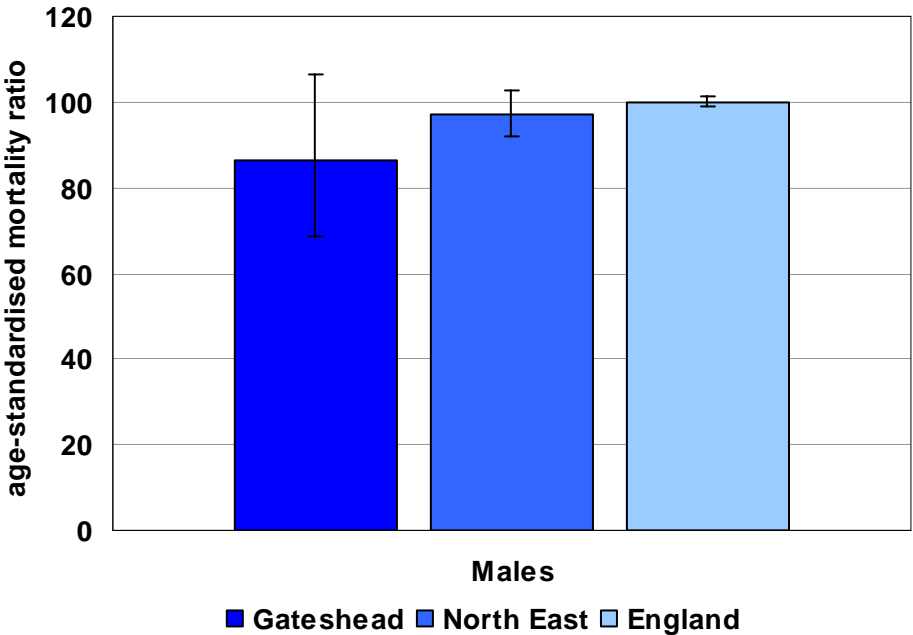
Indirectly age-standardised mortality ratio (SMR) due to prostate cancer (ICD10 C61), three year pooled.

		2003-05 (Pooled)			
		No. of deaths	SMR	Confidence Interval	
				Lower	Upper
Gateshead	Males	85	86	69	107
North East	Males	1,250	97	92	103
England	Males	25,593	100	99	101

Source: Clinical and Health Outcomes Knowledge Base at www.nchod.nhs.uk

Mortality from prostate cancer (ICD10 C61) 2003-05 (Pooled) All ages

Indirectly standardised ratios (SMR) with 95% confidence intervals



3.30 Incidence of prostate cancer, indirectly age-standardised registration ratio, people of all ages

Indirectly age-standardised registration ratio (SRR) due to prostate cancer (ICD10 C61), three year pooled.

		Average cases per year	2001-03* (Pooled)		
			SRR**	Confidence Interval	
				Lower	Upper
Gateshead	Males	120	108	97	119
North East	Males	1,415	99	96	102
England	Males	27,236	100	99	101

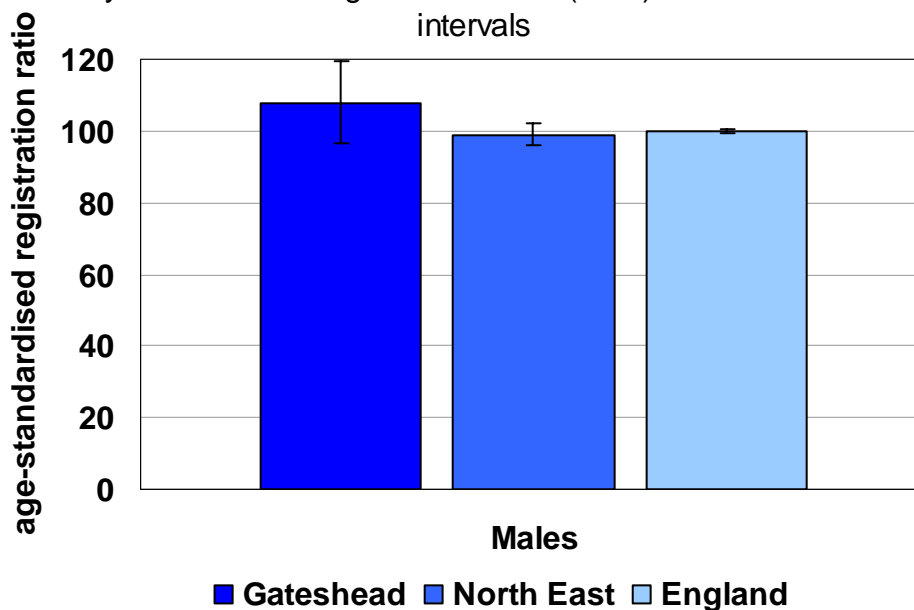
Source: Clinical and Health Outcomes Knowledge Base at www.nchod.nhs.uk

*Data on cancer registrations are gathered by the regional Cancer Registries. Ratios for 2001-03 are currently the most recent available figures that are published nationally.

** SRR = indirectly standardised registration ratio

Incidence of prostate cancer (ICD10 C61) 2001-03 (Pooled) All ages

Indirectly standardised registration ratios (SRR) with 95% confidence intervals



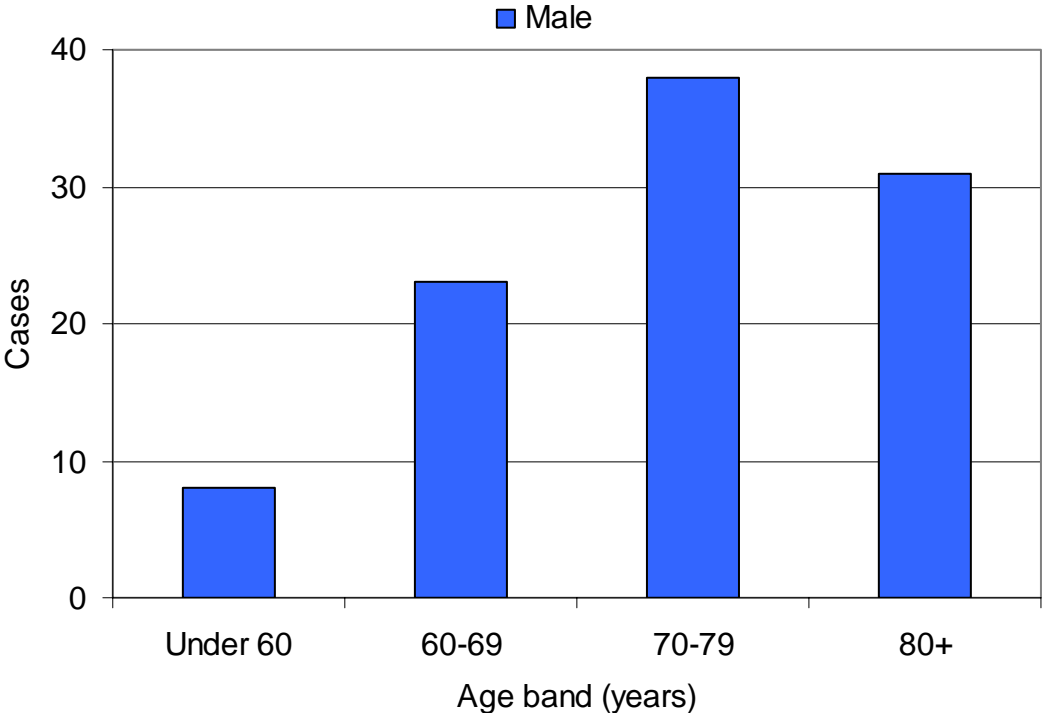
3.31 Incidence of prostate cancer, number of registrations by age band

Number of prostate cancer registrations (ICD10 C61) in Gateshead by age band.

		2004				
		Age band (years)				
Gateshead	Male	Total	Under 60	60-69	70-79	80+
		100	8	23	38	31

Source: Cancer Information Service, Northern & Yorkshire Cancer Registry and Information Service at www.nycris.org.uk

Prostate Cancer (ICD10 C61) Registrations in Gateshead by Age Band, 2004



Oesophageal Cancer

3.32 Mortality from oesophageal cancer, indirectly age-standardised mortality ratios, people of all ages

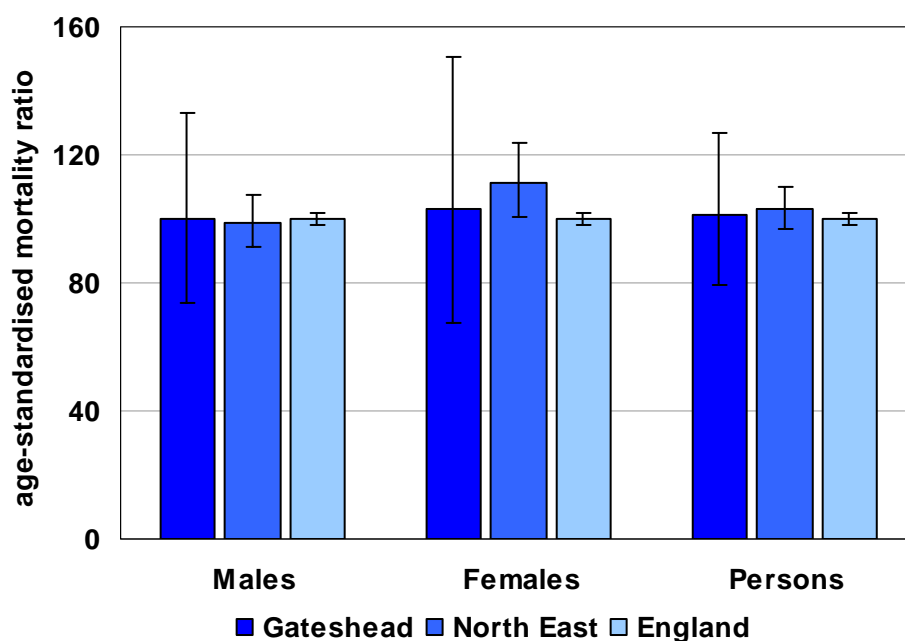
Indirectly age-standardised mortality ratio (SMR) due to oesophageal cancer (ICD10 C15) among people of all ages, three year pooled.

		2003-05 (Pooled)			
		No. of deaths	SMR	Confidence Interval	
				Lower	Upper
Gateshead	Males	47	100	74	133
	Females	26	103	67	151
	Persons	73	101	79	127
North East	Males	603	99	91	107
	Females	365	112	100	124
	Persons	968	103	97	110
England	Males	11,676	100	98	102
	Females	6,275	100	98	103
	Persons	17,951	100	99	101

Source: Clinical and Health Outcomes Knowledge Base at www.nchod.nhs.uk

Mortality from oesophageal cancer (ICD10 C15) 2003-05 (Pooled) All ages

Indirectly standardised ratios (SMR) with 95% confidence intervals



3.33 Incidence of oesophageal cancer, indirectly age-standardised registration ratios, people of all ages

Indirectly age-standardised registration ratio (SRR) due to oesophageal cancer (ICD10 C15) among people of all ages, three year pooled.

		2001-03 (Pooled)			
		Average cases per year	SMR	Confidence Interval	
				Lower	Upper
Gateshead	Males	19	100	74	133
	Females	13	103	67	151
	Persons	32	101	79	127
North East	Males	185	99	91	107
	Females	133	112	100	124
	Persons	319	103	97	110
England	Males	3912	100	98	102
	Females	2282	100	98	103
	Persons	6193	100	99	101

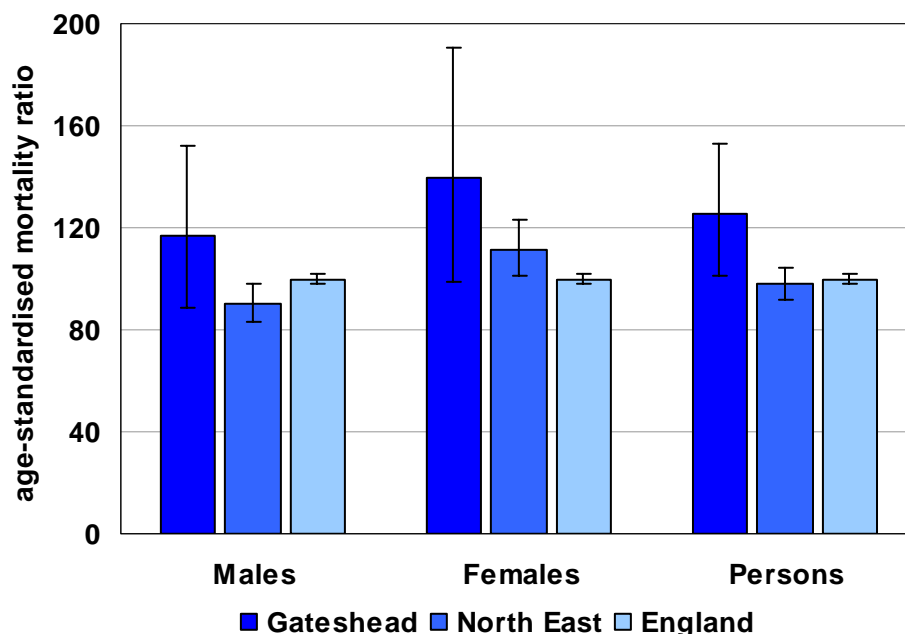
Source: Clinical and Health Outcomes Knowledge Base at www.nchod.nhs.uk

*Data on cancer registrations are gathered by the regional Cancer Registries. Ratios for 2001-03 are currently the most recent available figures that are published nationally.

** SRR = indirectly standardised registration ratio

Incidence of oesophageal cancer (ICD10 C15) 2001-03 (Pooled) All ages

Indirectly standardised registration ratios (SRR) with 95% confidence



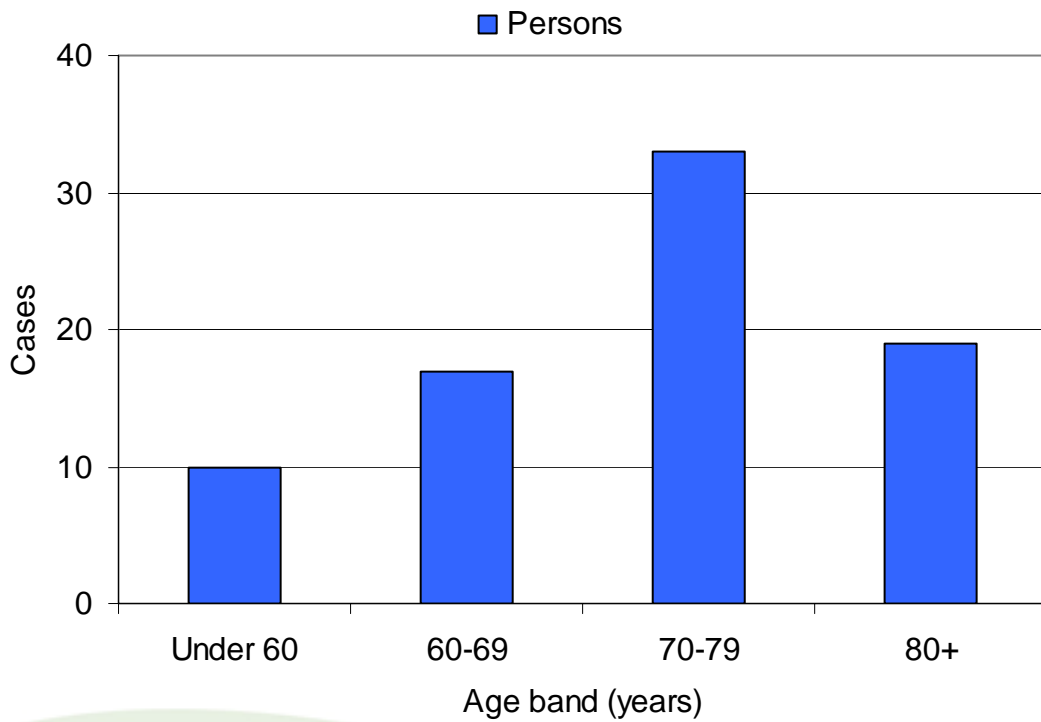
3.34 Incidence of oesophageal cancer, number of registrations by age band

Number of oesophageal cancer registrations (ICD10 C15) in Gateshead by age band.

		2002-2004				
		Age band (years)				
Gateshead	Persons	Total	Under 60	60-69	70-79	80+
		79	10	17	33	19

Source: Cancer Information Service, Northern & Yorkshire Cancer Registry and Information Service at www.nycris.org.uk
Figures are pooled over three years due to small numbers of registrations

Oesophageal Cancer (ICD10 C15) Registrations in Gateshead by Age Band, 2002-2004



Cervical Cancer

3.35 Mortality from cervical cancer, indirectly age-standardised mortality ratio, people of all ages

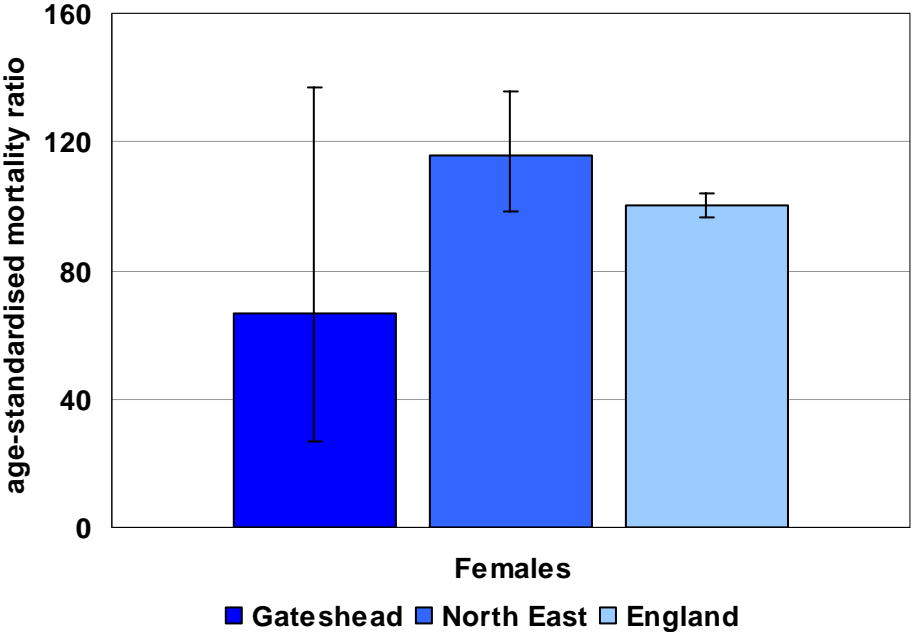
Indirectly age-standardised mortality ratio (SMR) due to cervical cancer (ICD10 C53) among people of all ages, three year pooled.

		2003-05 (Pooled)			
		No. of deaths	SMR	Confidence Interval	
				Lower	Upper
Gateshead	Females	7	67	27	137
North East	Females	159	116	99	135
England	Females	2,624	100	96	104

Source: Clinical and Health Outcomes Knowledge Base at www.nchod.nhs.uk

Mortality from cervical cancer (ICD10 C53) 2003-05 (Pooled) All ages

Indirectly standardised ratios (SMR) with 95% confidence intervals



3.36 Incidence of cervical cancer, indirectly age-standardised registration ratio, people of all ages

Indirectly age-standardised registration ratio (SRR) due to cervical cancer (ICD10 C53) among people of all ages, three year pooled.

		Average cases per year	2001-03* (Pooled)		
			SRR**	Confidence Interval	
				Lower	Upper
Gateshead	Females	10	103	69	148
North East	Females	146	119	108	131
England	Females	2,377	100	98	102

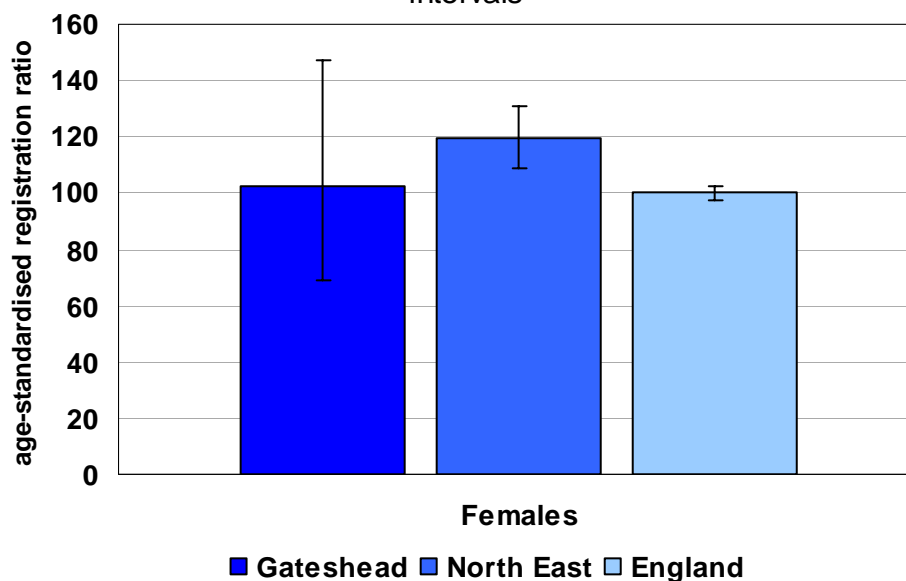
Source: Clinical and Health Outcomes Knowledge Base at www.nchod.nhs.uk

*Data on cancer registrations are gathered by the regional Cancer Registries. Ratios for 2001-03 are currently the most recent available figures that are published nationally.

** SRR = indirectly standardised registration ratio

Incidence of cervical cancer (ICD10 C53) 2001-03 (Pooled) All ages

Indirectly standardised registration ratios (SRR) with 95% confidence intervals

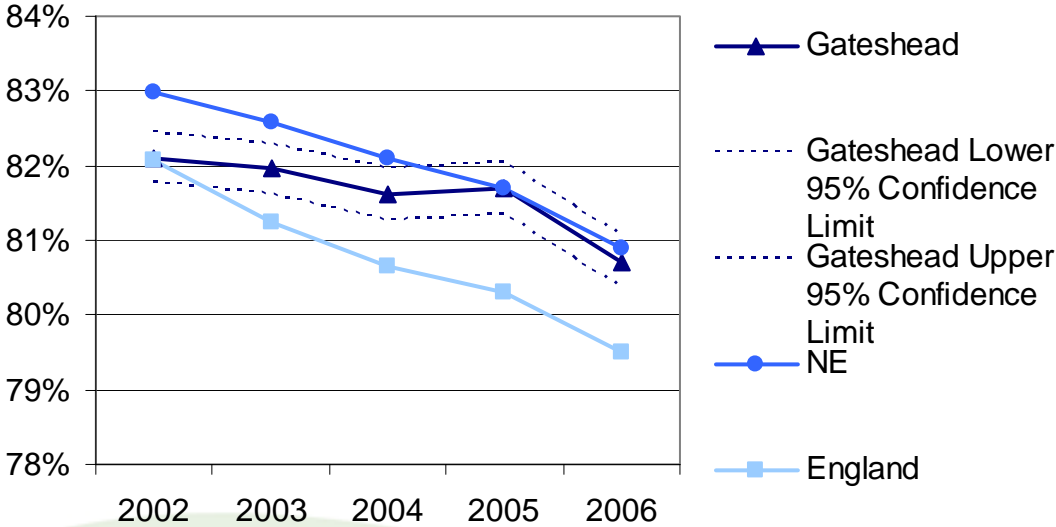


3.37 Coverage of cervical screening among women ages 25 to 64 years

Coverage is calculated as the proportion of eligible women between 25 and 64 years of age who have had an adequate smear test in the past five years. In Gateshead, as for the NE and England as a whole, coverage has been falling in recent years. Evidence for England suggests that uptake is lowest among younger age groups⁶.

5 year period ending 31-Mar	Eligible women, 25-64 years Gateshead	Coverage Gateshead	Lower 95% Confidence Limit Gateshead	Upper 95% Confidence Limit Gateshead	Coverage NE	Coverage England
2002	50287	82.1%	82.4%	81.8%	83.0%	82.1%
2003	49598	82.0%	82.3%	81.6%	82.6%	81.2%
2004	49518	81.6%	82.0%	81.3%	82.1%	80.6%
2005	49700	81.7%	82.0%	81.4%	81.7%	80.3%
2006	50000	80.7%	81.0%	80.4%	80.9%	79.5%

Source: 2002 to 2004 - Department of Health at www.dh.gov.uk, 2005 & 2006 - Health & Social Care Information Centre at www.ic.nhs.uk



⁶ The Information Centre, "Cervical Screening Programme, England 2005-06", p2, The Information Centre, Leeds

Malignant Melanoma (skin cancer)

3.38 Mortality from malignant melanoma, indirectly age-standardised mortality ratio, people of all ages

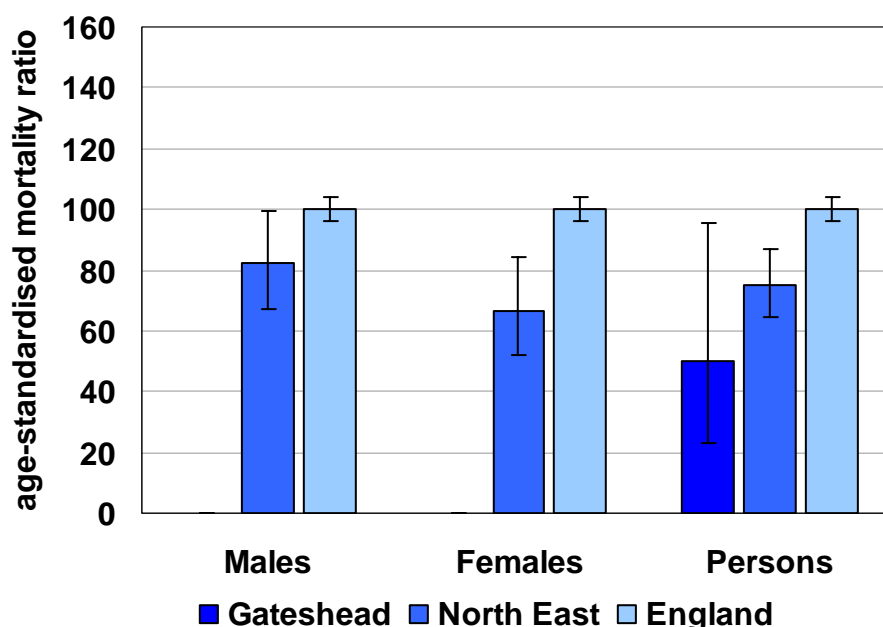
Indirectly age-standardised mortality ratio (SMR) due to malignant melanoma (ICD10 C43) among people of all ages, three year pooled.

		2003-05 (Pooled)			
		Number of deaths	SMR	Confidence Interval	
				Lower	Upper
Gateshead	Males	-	-	-	-
	Females	-	-	-	-
	Persons	9	50	23	95
North East	Males	103	82	67	100
	Females	72	67	52	84
	Persons	175	75	64	87
England	Males	2,411	100	96	104
	Females	2,062	100	96	104
	Persons	4,473	100	97	103

Source: Clinical and Health Outcomes Knowledge Base at www.nchod.nhs.uk
 Figures for Gateshead only shown for persons due to small numbers of deaths

Mortality from malignant melanoma (ICD10 C43) 2003-05 (Pooled) All ages

Indirectly standardised ratios (SMR) with 95% confidence intervals



3.39 Incidence of malignant melanoma, indirectly age-standardised registration ratio, people of all ages

Indirectly age-standardised registration ratio (SRR) due to malignant melanoma (ICD10 C43) among people of all ages, three year pooled.

		2001-03* (Pooled)			
		Cases per year	SRR**	Confidence Interval	
				Lower	Upper
Gateshead	Males	13	113	80	154
	Females	14	93	67	126
	Persons	27	102	81	126
North East	Males	135	90	82	99
	Females	186	97	89	105
	Persons	321	94	88	100
England	Males	2,884	100	98	102
	Females	3,670	100	98	102
	Persons	6,554	100	99	101

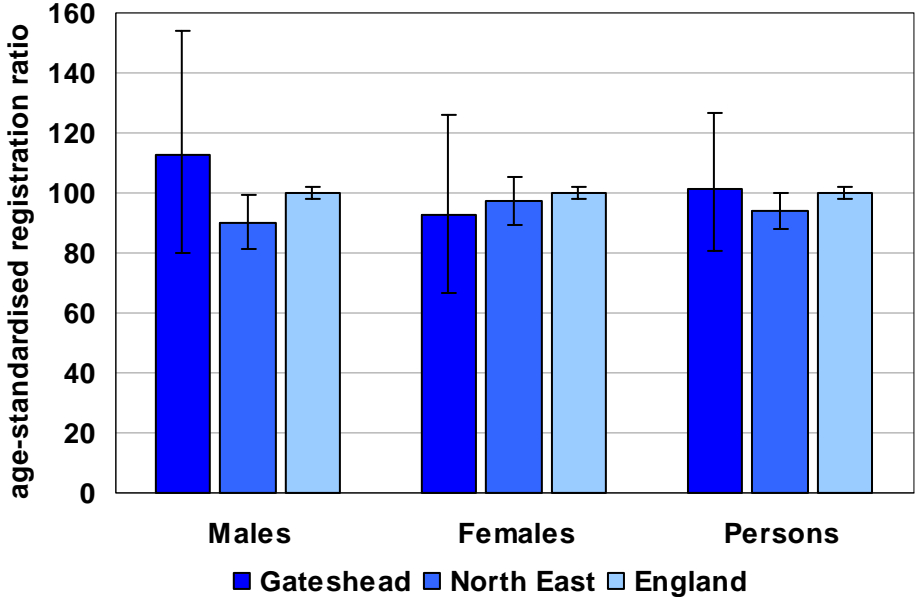
Source: Clinical and Health Outcomes Knowledge Base at www.nchod.nhs.uk

*Data on cancer registrations are gathered by the regional Cancer Registries. Ratios for 2001-03 are currently the most recent available figures that are published nationally.

** SRR = indirectly standardised registration ratio

Incidence of malignant melanoma (ICD10 C43) 2001-03 (Pooled) All ages

Indirectly standardised registration ratios (SRR) with 95% confidence intervals



Glossary

DMR - Directly age-standardised mortality rate

A directly age-standardised mortality rate is calculated by applying the average or crude mortality rates within each five year age band within a study population (here Gateshead, the NE or England) to a standard population structure, here the European standard population of 100,000. The resultant mortality rates are directly comparable.

DRR - Directly age-standardised registration rate

A directly age-standardised registration rate is calculated by applying the average or crude registration rates (number of registrations divided by population) within each five year age band within a study population (here Gateshead, the NE or England) to a standard population structure, here the European standard population of 100,000. The resultant registration rates are directly comparable.

Incidence

The incidence of disease is the rate at which new cases occur in a population during a specified period. It is commonly measured in cases per 100,000 population per year.

Prevalence

The prevalence of disease is the proportion of a population that are cases at a specific point in time. It is commonly measured in as a percentage of the population.

SMR - Indirectly age-standardised mortality ratio

An indirectly age-standardised mortality ratio is a comparison of mortality in England (the reference population) with mortality in the study population, here Gateshead or the NE. A ratio of 100 indicates that the level of mortality in the study population e.g. Gateshead is the same as expected mortality if age-specific mortality rates for England are applied to the Gateshead population. Mortality is standardised to the age structure of the study population. As Gateshead and the NE have different population structures the SMRs for each area are not comparable.

SRR - Indirectly age-standardised registration ratio

An indirectly age-standardised registration ratio is a comparison of registrations in England (the reference population) with registrations in the study population, here Gateshead or the NE. A ratio of 100 indicates that incidence or registration rate in the study population e.g. Gateshead is the same as expected incidence if age-specific registration rates for England are applied to the Gateshead population. Incidence is standardised to the age structure of the study population. As Gateshead and the NE have different population structures, the SRRs for each area are not comparable.

