

# Chapter 5

# Demography

This page is designed to be blank



# 5 Demography

## ***Index – Chapter5***

### **Introduction**

### **Acknowledgements**


### **Population structure**

- 5.1 Population, Census Day 2001
- 5.2 Population by electoral ward, Census Day 2001
- 5.3 Population density
- 5.4 Age distribution
- 5.5 Age distribution by electoral ward
- 5.6 Mid-year population estimates and projections, trends over time
- 5.7 2004 mid-year population estimates by five year age band
- 5.8 Population change, 1981 to 2001
- 5.9 Proportion of the population aged 65 and over
- 5.10 Self-reported health status by electoral ward
- 5.11 Population by ethnic group
- 5.12 Population by marital status

### **Education, employment and income**

- 5.13 Job seekers
- 5.14 House price/earnings affordability ratio
- 5.15 People with no qualifications
- 5.16 People economically active and percentage in employment

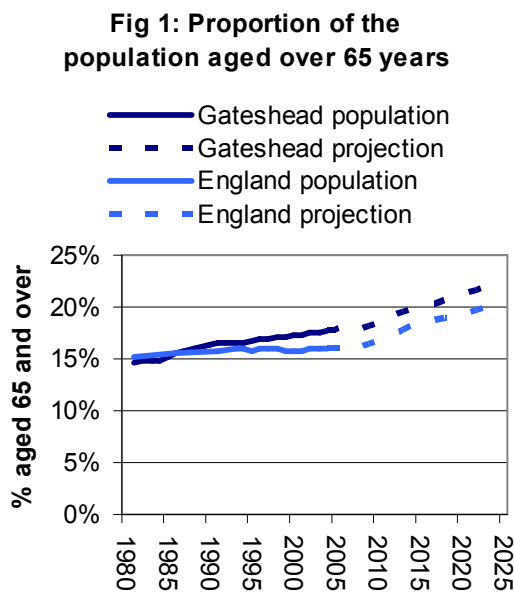
### **Local initiatives to assist people in finding employment**

- 5.17 Connexions
  - 5.18 Pathways to work
- 

# 5 Demography

## Introduction

The size of the Gateshead population is falling over time, in contrast to the population of England as a whole which continues to grow. Gateshead also has an ageing population. In Gateshead, as across England, people are now living longer. This shift towards a greater proportion of the population aged over 65 is compounded in Gateshead as there has been a notable fall in the numbers of young people between 15 and 29 years of age. In 1980 under 15% of Gateshead's population were aged over 65 (Fig 1). By 2004 this figure had risen to 18% and is forecast to rise further to 23% by 2025. This trend has significant economic implications.



It is the population of older people that use health services most frequently and so the forecast population structure is of interest to those planning health services. National survey data<sup>1</sup> suggest that there are currently 550,000 GP consultations each year in Gateshead. Although the total size of the population is forecast to fall by 4% by 2025, assuming GP contact rates remain the same, the number of GP consultations in Gateshead will only fall by 1% due to the increased proportion of older people. This effect will be accentuated in those electoral wards where the proportion of older people is higher than the average for Gateshead (see 5.5 Age distribution by electoral ward).

It is encouraging that both the number of job seekers and the proportion who are long-term job seekers in Gateshead have fallen in recent years. Economic prosperity is an important wider determinant of health, and this was highlighted in the Gateshead Director of Public Health's 2003 Annual Report<sup>2</sup>. Two agencies in Gateshead featured in this article, Connexions and Pathways to Work. These agencies continue to assist young and unemployed people to find meaningful employment and their work is outlined at the end of the chapter (5.18 and 5.19).

For further information contact:

Public Health Analyst, Gateshead PCT, Team View, 5<sup>th</sup> Avenue Business Park, Gateshead, NE11 0NB. Tel: 0191 491 5713

<sup>1</sup> "Morbidity Statistics from General Practice, Fourth National Study 1991-1992", 1995, HMSO available on the internet at [http://www.statistics.gov.uk/downloads/theme\\_health/MB5No3.pdf](http://www.statistics.gov.uk/downloads/theme_health/MB5No3.pdf)

<sup>2</sup> "Public Health: Everything changes it? – Director of Public Health Annual Report for Gateshead 2003", Gateshead Primary Care Trust

## **Acknowledgements**

This chapter of the Gateshead Compendium of Health Related Statistics contains data from a range of partner agencies. Sources of data are detailed at the foot of each individual item. Thanks are extended to the following organisations for providing and allowing use of their information:

Office for National Statistics

Thanks must also go to the following organisations for providing an outline of their work:

Connexions  
Pathways to Work



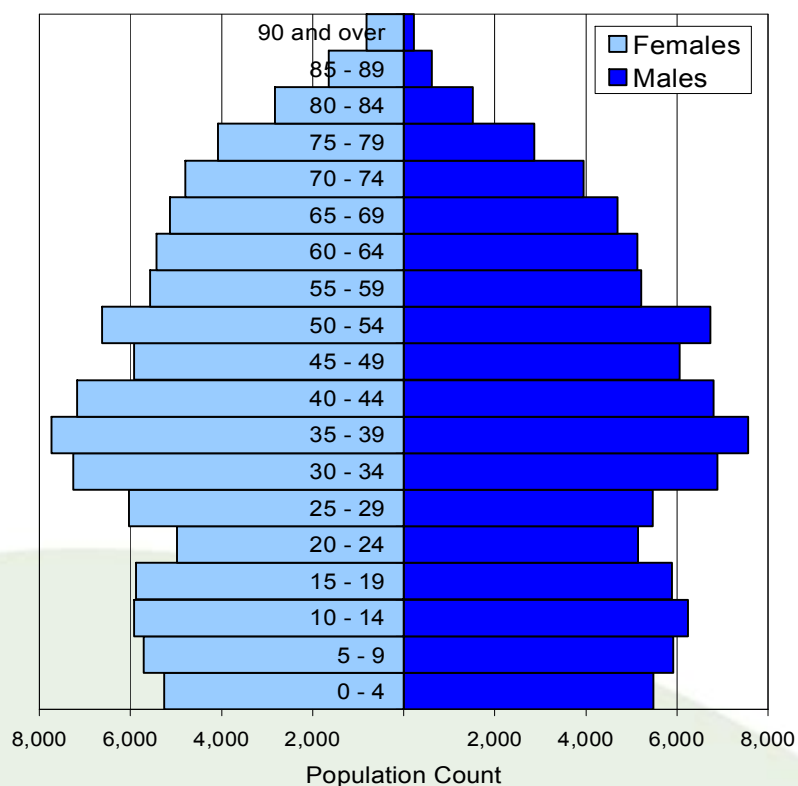
## 5.1 Gateshead population, Census day 2001

### Population at Census Day (29<sup>th</sup> April 2001)

	All people	Males	Females	Living in households	Students away from home
Gateshead	191,151	92,408	98,743	188,703	934
North East	2,515,442	1,218,579	1,296,863	2,472,884	17,862
England	49,138,831	23,922,144	25,216,687	48,248,150	486,829
England & Wales	52,041,916	25,325,926	26,715,990	51,107,639	515,144

Source: Census 2001, Neighbourhood Statistics (<http://neighbourhood.statistics.gov.uk/>), Office for National Statistics

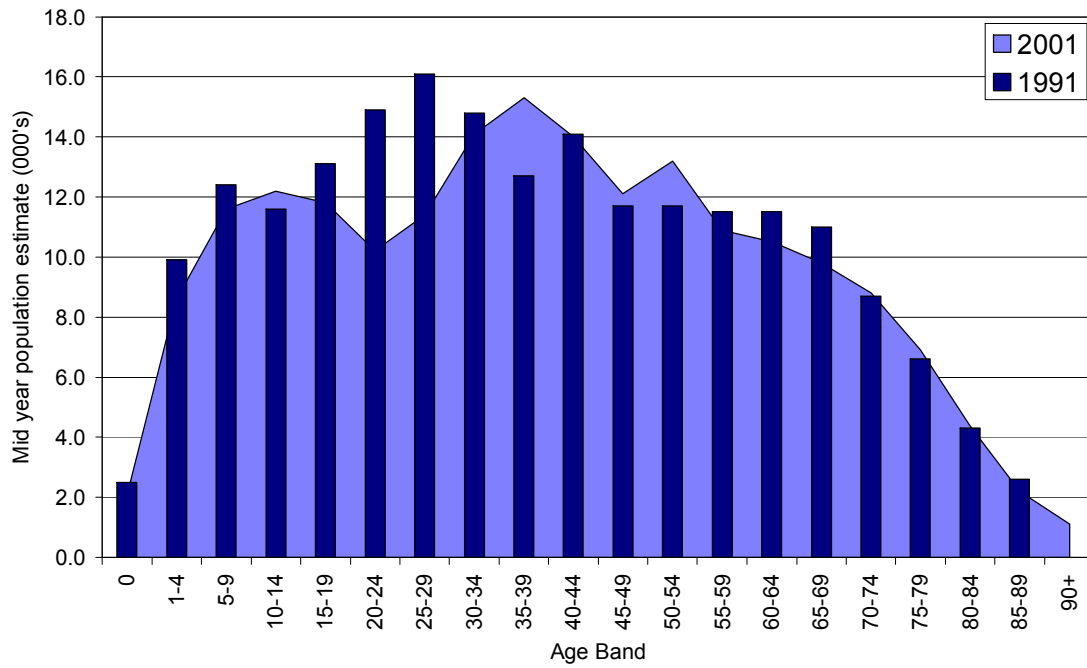
### Population Profile of Gateshead by Age & Sex



Source: Census 2001 Population Estimates, Office for National Statistics ([http://www.statistics.gov.uk/census2001/population\\_data.asp](http://www.statistics.gov.uk/census2001/population_data.asp))

### 5.1 Gateshead population, Census Day 2001 (cont.)

**Distribution of the Gateshead Population by Age  
Mid 1991 and Mid 2001 compared**



Source: Census 2001, Office for National Statistics at [www.statistics.gov.uk](http://www.statistics.gov.uk)

## 5.2 Population by electoral ward, Census Day 2001

Electoral ward boundaries in Gateshead changed in June 2004. These population figures apply to the ward boundaries in place prior to June 2004.

Ward	Persons	Males	Females
Bede	7,122	3,669	3,453
Bensham	7,487	3,749	3,738
Birtley	8,021	3,895	4,126
Blaydon	8,758	4,189	4,569
Chopwell and Rowlands Gill	9,325	4,505	4,820
Chowdene	8,324	3,974	4,350
Crawcrook and Greenside	9,331	4,480	4,851
Deckham	7,884	3,783	4,101
Dunston	9,633	4,704	4,929
Felling	7,299	3,489	3,810
High Fell	8,034	3,782	4,252
Lamesley	7,812	3,712	4,100
Leam	9,925	4,760	5,165
Low Fell	9,496	4,561	4,935
Pelaw and Heworth	8,026	3,782	4,244
Ryton	9,219	4,411	4,808
Saltwell	8,141	4,006	4,135
Teams	9,241	4,495	4,746
Whickham North	9,976	4,850	5,126
Whickham South	10,312	4,993	5,319
Winlaton	7,545	3,640	3,905
Wrekendyke	10,240	4,979	5,261

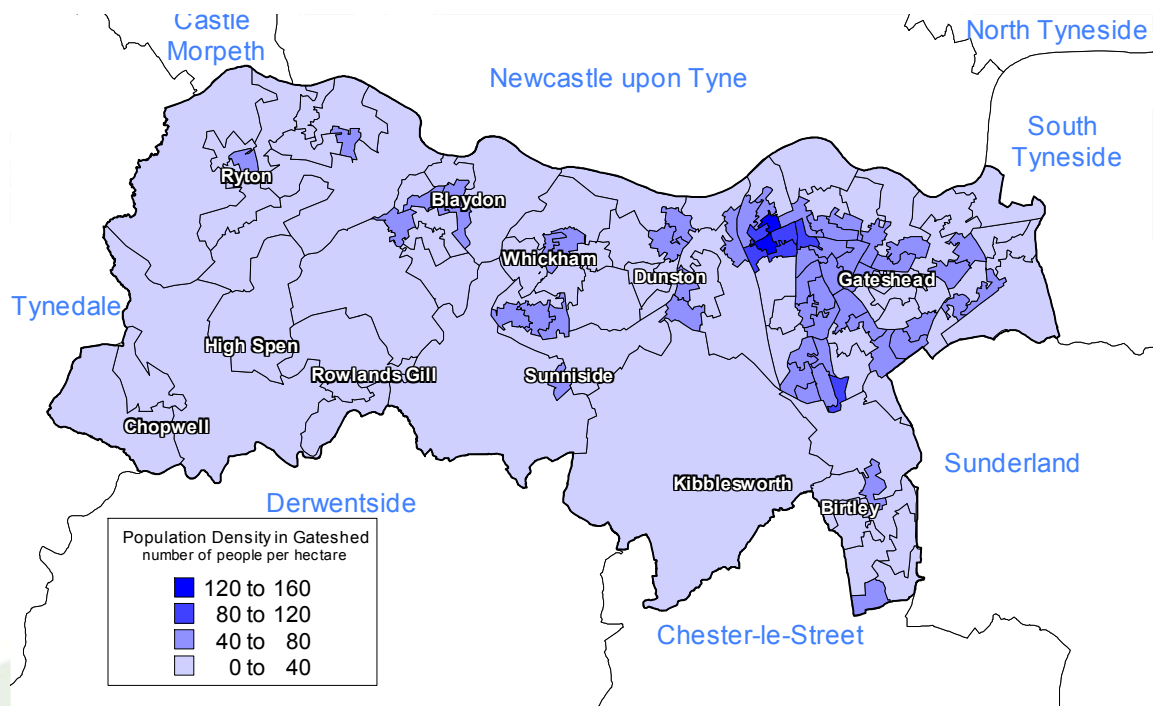
Source: Census 2001, Neighbourhood Statistics (<http://neighbourhood.statistics.gov.uk/>), Office for National Statistics

### 5.3 Population density at Census Day 2001

	Area (hectares)	Population Density (number of people per hectare)
Gateshead	14,235	13.43
North East	857,309	2.93
England	13,027,872	3.77
England & Wales	15,102,075	3.45

Source: Census 2001, Neighbourhood Statistics (<http://neighbourhood.statistics.gov.uk/>), Office for National Statistics

**Population Density in Gateshead**  
**Number of people per hectare, by lower tier super output area**



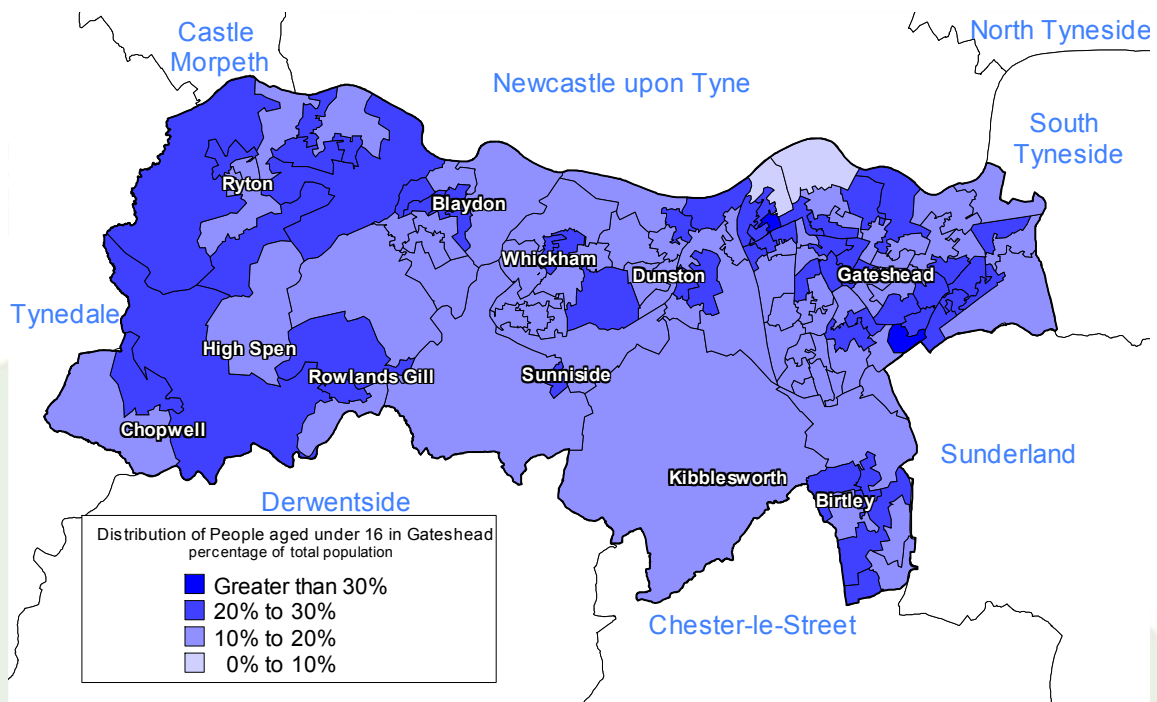
Source: Census 2001, Neighbourhood Statistics (<http://neighbourhood.statistics.gov.uk/>), Office for National Statistics

## 5.4 Age distribution at Census Day 2001

	ALL PEOPLE	Under 16		65 and over		75 and over		85 and over	
	Count	Count	Percentage	Count	Percentage	Count	Percentage	Count	Percentage
<b>Gateshead</b>	<b>191,151</b>	<b>36,937</b>	<b>19.3%</b>	<b>33,144</b>	<b>17.3%</b>	<b>14,573</b>	<b>7.6%</b>	<b>3,295</b>	<b>1.7%</b>
Newcastle	259,536	48,697	18.8%	41,370	15.9%	19,681	7.6%	4,884	1.9%
South Tyneside	152,785	31,049	20.3%	27,246	17.8%	12,428	8.1%	2,547	1.7%
Sunderland	280,807	56,213	20.0%	43,776	15.6%	18,366	6.5%	4,063	1.4%
North East	2,515,442	497,321	19.8%	416,312	16.6%	186,767	7.4%	42,742	1.7%
England	49,138,831	9,901,581	20.2%	7,808,000	15.9%	3,705,159	7.5%	954,024	1.9%
England & Wales	52,041,916	10,488,736	20.2%	8,312,774	16.0%	3,945,742	7.6%	1,012,405	1.9%

Source: Census 2001 Neighbourhood Statistics (<http://neighbourhood.statistics.gov.uk/>), Office of National Statistics

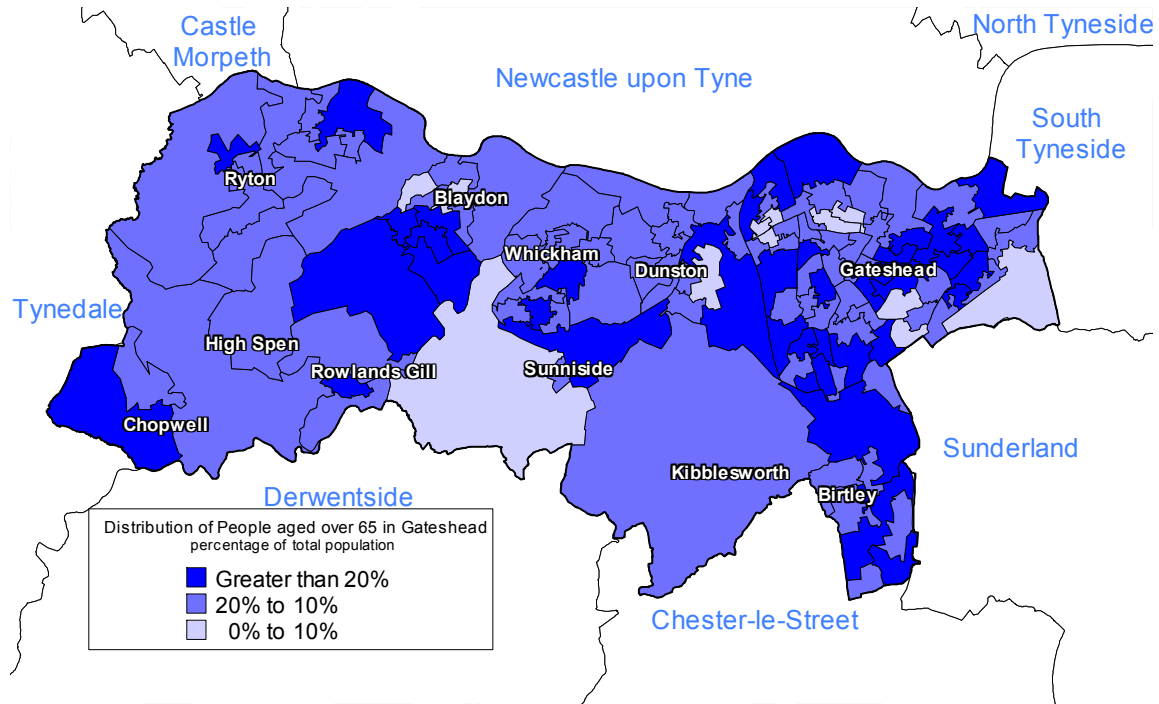
### Distribution of People aged under 16 in Gateshead by lower tier super output area



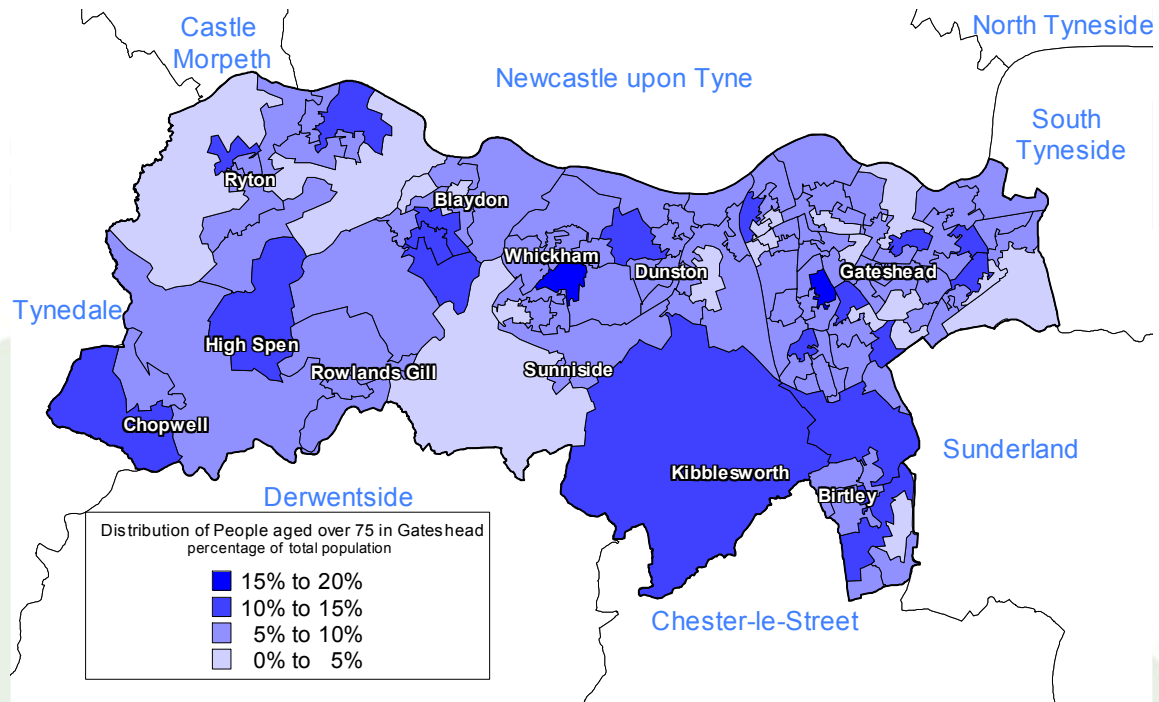
Source: Census 2001, Neighbourhood Statistics (<http://neighbourhood.statistics.gov.uk/>), Office for National Statistics

## 5.4 Age distribution (cont.)

### Distribution of People aged 65 and over in Gateshead by lower tier super output area

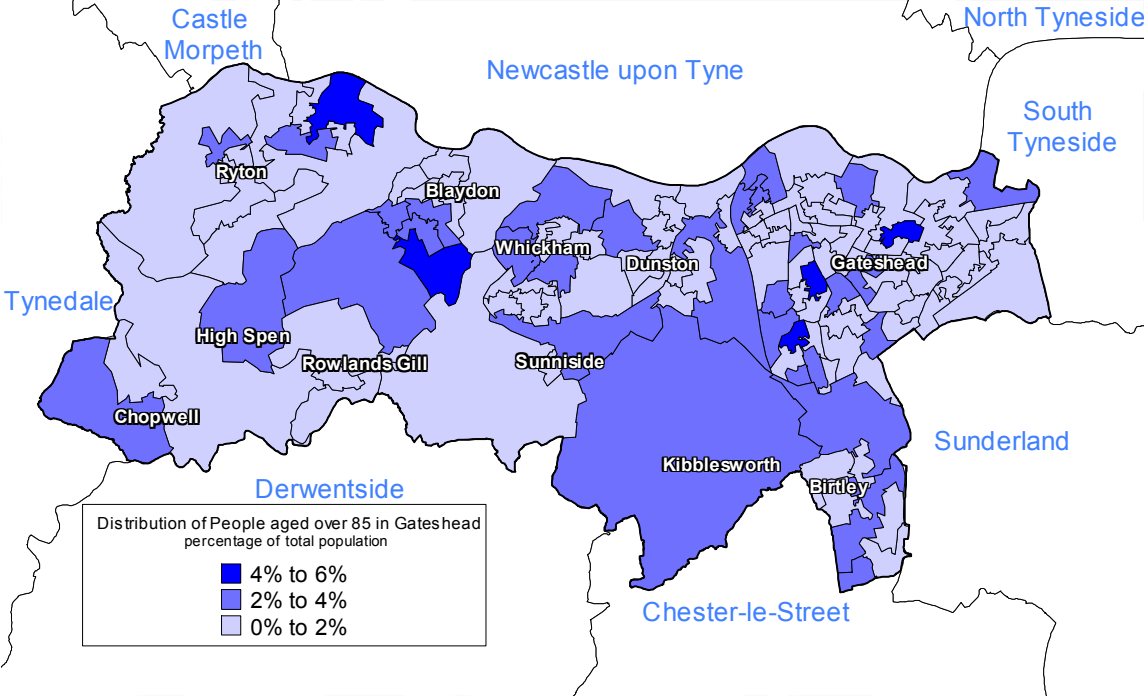


### Distribution of People aged 75 and over in Gateshead by lower tier super output area



**5.4 Age distribution (cont.)**

**Distribution of People aged 85 and over in Gateshead by lower tier super output area**



Source: Census 2001 Neighbourhood Statistics (<http://neighbourhood.statistics.gov.uk/>), Office for National Statistics

## 5.5 Age distribution by electoral ward at Census Day 2001

Electoral ward boundaries in Gateshead changed in June 2004. These population figures apply to the ward boundaries in place prior to June 2004.

### Populations

Ward	Under 16	65 and over	75 and over	85 and over	All People
Bede	1319	990	428	92	7122
Bensham	1712	1097	528	152	7485
Birtley	1538	1425	651	138	8021
Blaydon	1868	1195	506	89	8758
Chopwell and Rowlands Gill	1899	1776	764	133	9323
Chowdene	1431	1713	752	212	8325
Crawcrook and Greenside	1826	1454	708	165	9331
Deckham	1677	1152	503	118	7884
Dunston	1887	1561	676	139	9634
Felling	1377	1379	605	166	7299
High Fell	1693	1527	708	164	8032
Lamesley	1407	1442	671	131	7812
Leam	2236	1619	652	127	9924
Low Fell	1672	1761	851	247	9498
Pelaw and Heworth	1459	1709	722	146	8025
Ryton	1784	1668	727	166	9218
Saltwell	1663	1114	484	113	8142
Teams	1738	1515	675	136	9241
Whickham North	1786	1923	892	210	9975
Whickham South	1700	1638	634	130	10313
Winlaton	1170	1775	793	229	7545
Wrekendyke	2095	1709	641	90	10242
<b>Gateshead</b>	<b>36937</b>	<b>33142</b>	<b>14571</b>	<b>3293</b>	<b>191149</b>

Source: Census 2001, Neighbourhood Statistics (<http://neighbourhood.statistics.gov.uk/>), Office for National Statistics

## 5.5 Age distribution by electoral ward (cont.)

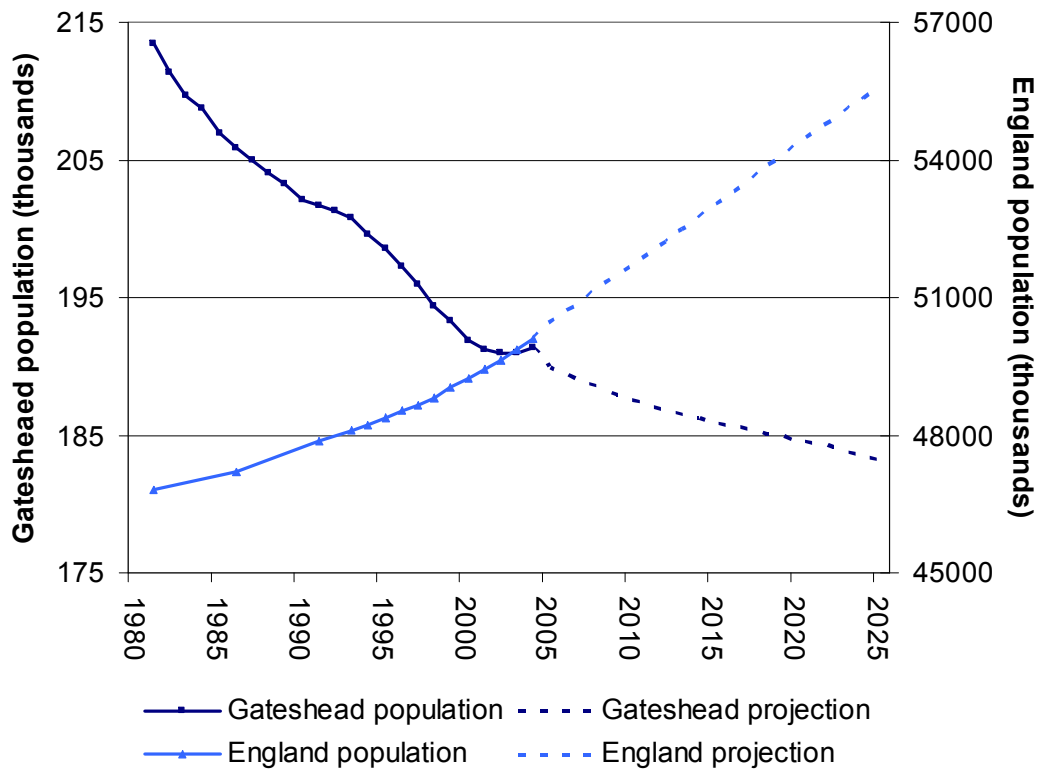
### Percentage of the total population

Ward	Under 16	65 and over	75 and over	85 and over
Bede	18.5%	13.9%	6.0%	1.3%
Bensham	22.9%	14.7%	7.1%	2.0%
Birtley	19.2%	17.8%	8.1%	1.7%
Blaydon	21.3%	13.6%	5.8%	1.0%
Chopwell and Rowlands Gill	20.4%	19.0%	8.2%	1.4%
Chowdene	17.2%	20.6%	9.0%	2.5%
Crawcrook and Greenside	19.6%	15.6%	7.6%	1.8%
Deckham	21.3%	14.6%	6.4%	1.5%
Dunston	19.6%	16.2%	7.0%	1.4%
Felling	18.9%	18.9%	8.3%	2.3%
High Fell	21.1%	19.0%	8.8%	2.0%
Lamesley	18.0%	18.5%	8.6%	1.7%
Leam	22.5%	16.3%	6.6%	1.3%
Low Fell	17.6%	18.5%	9.0%	2.6%
Pelaw and Heworth	18.2%	21.3%	9.0%	1.8%
Ryton	19.4%	18.1%	7.9%	1.8%
Saltwell	20.4%	13.7%	5.9%	1.4%
Teams	18.8%	16.4%	7.3%	1.5%
Whickham North	17.9%	19.3%	8.9%	2.1%
Whickham South	16.5%	15.9%	6.1%	1.3%
Winlaton	15.5%	23.5%	10.5%	3.0%
Wrekendyke	20.5%	16.7%	6.3%	0.9%
<b>Gateshead</b>	<b>19.3%</b>	<b>17.3%</b>	<b>7.6%</b>	<b>1.7%</b>

Source: Census 2001 Neighbourhood Statistics (<http://neighbourhood.statistics.gov.uk/>), Office for National Statistics

## 5.6 Mid-year population estimates and projections, trends over time

Population trends for Gateshead and England



The two y-axis scales are designed so that an equivalent percentage increase in each population will be represented by a slope of similar gradient

Sources: England projections: 2004-based national population projections, Government Actuary's Department, [www.gad.gov.uk](http://www.gad.gov.uk)  
 England historical population: Clinical and Health Outcomes Knowledge Base at [www.nchod.nhs.uk](http://www.nchod.nhs.uk)  
 Gateshead projections: 2003-based subnational population projections, Office for National Statistics, [www.statistics.gov.uk](http://www.statistics.gov.uk)  
 Gateshead historical population: Clinical and Health Outcomes Knowledge Base at [www.nchod.nhs.uk](http://www.nchod.nhs.uk)

## 5.6 Mid-year population estimates and projections, trends over time (cont.)

### Population estimates

Year	Total Popul'n Gateshead (000's)	Gateshead Percentage of Population in each age group					Total Popul'n England (000's)
		0-14	15-59	60+	75+	85+	
1981	213.4	19.9%	59.8%	20.3%	5.4%	0.8%	46,821
1982	211.4	19.5%	59.7%	20.7%	5.6%	0.9%	
1983	209.6	19.3%	59.7%	21.0%	5.7%	0.9%	
1984	208.7	18.9%	59.8%	21.3%	5.9%	1.0%	
1985	206.9	18.7%	59.9%	21.5%	6.0%	1.0%	
1986	205.8	18.5%	59.8%	21.7%	6.2%	1.1%	47,188
1987	205.0	18.3%	59.9%	21.8%	6.3%	1.2%	
1988	204.0	18.2%	59.9%	21.9%	6.4%	1.2%	
1989	203.2	18.2%	59.8%	21.9%	6.5%	1.2%	
1990	202.0	18.1%	59.8%	22.0%	6.6%	1.3%	
1991	201.7	18.0%	59.8%	22.2%	6.7%	1.3%	47,875
1992	201.3	18.3%	59.6%	22.2%	6.7%	1.3%	
1993	200.7	18.5%	59.2%	22.2%	6.6%	1.4%	48,102
1994	199.6	18.6%	59.3%	22.2%	6.6%	1.5%	48,229
1995	198.5	18.5%	59.3%	22.3%	6.9%	1.5%	48,383
1996	197.2	18.5%	59.2%	22.3%	7.0%	1.5%	48,519
1997	195.9	18.5%	59.1%	22.4%	7.1%	1.6%	48,665
1998	194.3	18.4%	59.0%	22.6%	7.3%	1.6%	48,821
1999	193.3	18.4%	59.0%	22.7%	7.3%	1.6%	49,033
2000	191.9	18.1%	59.1%	22.8%	7.6%	1.7%	49,233
2001	191.2	18.0%	59.1%	22.9%	7.6%	1.7%	49,450
2002	190.9	17.8%	59.4%	22.8%	7.8%	1.7%	49,647
2003	191.0	17.5%	59.6%	22.8%	7.8%	1.7%	49,856
2004	191.3	17.3%	59.9%	22.8%	7.8%	1.7%	50,093

Source: Mid Year Population Estimates, Office for National Statistics at [www.statistics.gov.uk](http://www.statistics.gov.uk)

## 5.6 Mid-year population estimates and projections, trends over time (cont.)

### Population projections

Year	Total Popul'n Gateshead (000's)	Gateshead Percentage of Population in each age group					Total Popul'n England (000's)
		0-14	15-59	60+	75+	85+	
2005	189.9	17.2%	59.8%	23.0%	8.0%	1.8%	50,434
2006	189.4	16.9%	59.8%	23.3%	8.1%	1.9%	50,714
2007	188.9	16.7%	59.6%	23.8%	8.2%	2.0%	50,976
2008	188.4	16.5%	59.3%	24.2%	8.3%	2.0%	51,220
2009	188.0	16.4%	59.1%	24.5%	8.4%	2.0%	51,466
2010	187.6	16.3%	59.1%	24.7%	8.5%	2.1%	51,715
2011	187.2	16.1%	59.0%	24.9%	8.6%	2.1%	51,967
2012	186.8	15.9%	59.0%	25.1%	8.7%	2.2%	52,223
2013	186.5	15.8%	58.9%	25.4%	9.0%	2.3%	52,482
2014	186.2	15.7%	58.8%	25.6%	9.1%	2.3%	52,744
2015	185.9	15.7%	58.5%	25.8%	9.2%	2.4%	53,009
2016	185.6	15.7%	58.3%	26.1%	9.3%	2.5%	53,276
2017	185.4	15.6%	58.0%	26.4%	9.3%	2.5%	53,544
2018	185.1	15.6%	57.6%	26.8%	9.4%	2.6%	53,812
2019	184.9	15.5%	57.3%	27.1%	9.5%	2.7%	54,079
2020	184.6	15.5%	57.0%	27.6%	9.8%	2.7%	54,344
2021	184.4	15.4%	56.6%	28.0%	10.0%	2.8%	54,605
2022	184.1	15.4%	56.2%	28.5%	10.4%	2.9%	54,861
2023	183.8	15.4%	55.7%	28.9%	10.7%	3.0%	55,112
2024	183.5	15.4%	55.2%	29.4%	11.0%	3.1%	55,357
2025	183.1	15.4%	54.8%	29.9%	11.2%	3.2%	55,594

Sources: England, 2004-based national population projections, Government Actuary's Department, [www.gad.gov.uk](http://www.gad.gov.uk)  
Gateshead, 2003-based subnational population projections, Office for National Statistics, [www.statistics.gov.uk](http://www.statistics.gov.uk)

## 5.6 Mid-year population estimates and projections, trends over time (cont.)

**Gateshead population projections by gender** (figures may not sum due to rounding)

### Males (000's)

	0-14	15-29	30-44	45-59	60-74	75+	Total
2005	16.8	17.5	19.9	18.9	13.5	5.8	92.4
2010	15.7	18.2	17.7	19.1	14.5	6.5	91.7
2015	15.2	18.0	16.7	19.7	14.7	7.2	91.2
2020	14.8	17.0	17.0	18.5	15.6	7.5	90.8
2025	14.6	16.1	17.9	16.5	16.1	8.8	90.2

### Females (000's)

	0-14	15-29	30-44	45-59	60-74	75+	Total
2005	15.9	16.8	21.3	19.1	15.2	9.4	97.5
2010	14.6	17.1	18.7	19.8	16.0	9.5	95.8
2015	14.0	16.5	17.2	20.8	16.2	9.9	94.7
2020	13.7	15.5	17.0	19.9	17.2	10.4	93.8
2025	13.6	14.5	17.6	17.6	18.1	11.7	92.9

### Persons (000's)

	0-14	15-29	30-44	45-59	60-74	75+	Total
2005	32.6	34.3	41.2	38.0	28.6	15.1	189.9
2010	30.5	35.4	36.5	38.9	30.5	15.9	187.6
2015	29.2	34.6	33.7	40.4	30.8	17.1	185.9
2020	28.6	32.6	34.1	38.5	33.0	18.0	184.6
2025	28.2	30.8	35.4	34.2	34.2	20.5	183.1

Source: 2003-based subnational population projections, Office for National Statistics at [www.statistics.gov.uk](http://www.statistics.gov.uk)

## 5.7 2004 mid-year estimates of resident population for Gateshead by five year age band

Age Group	Males		Females		Persons		Cumulative %
	Count	Percent	Count	Percent	Count	Percent	
<1	1,029	1.1%	1,029	1.0%	2,058	1.1%	1.1%
1-4	4,244	4.6%	3,961	4.0%	8,205	4.3%	5.4%
5-9	5,629	6.1%	5,405	5.5%	11,034	5.8%	11.1%
10-14	6,043	6.5%	5,772	5.9%	11,815	6.2%	17.3%
15-17	3,965	4.3%	3,573	3.6%	7,538	3.9%	21.3%
18-19	2,561	2.8%	2,359	2.4%	4,920	2.6%	23.8%
20-24	5,610	6.0%	5,591	5.7%	11,201	5.9%	29.7%
25-29	5,373	5.8%	5,462	5.6%	10,835	5.7%	35.3%
30-34	6,181	6.7%	6,714	6.8%	12,895	6.7%	42.1%
35-39	7,234	7.8%	7,563	7.7%	14,797	7.7%	49.8%
40-44	7,183	7.7%	7,529	7.7%	14,712	7.7%	57.5%
45-49	6,505	7.0%	6,634	6.7%	13,139	6.9%	64.4%
50-54	5,906	6.4%	5,806	5.9%	11,712	6.1%	70.5%
55-59	6,312	6.8%	6,479	6.6%	12,791	6.7%	77.2%
60-64	4,777	5.1%	5,140	5.2%	9,917	5.2%	82.4%
65-69	4,725	5.1%	5,180	5.3%	9,905	5.2%	87.6%
70-74	4,021	4.3%	4,780	4.9%	8,801	4.6%	92.2%
75-79	2,954	3.2%	3,973	4.0%	6,927	3.6%	95.8%
80-84	1,780	1.9%	2,993	3.0%	4,773	2.5%	98.3%
85+	875	0.9%	2,427	2.5%	3,302	1.7%	100.0%
All Ages	92,907	100.0%	98,370	100.0%	191,277	100%	

Source: Resident Population Estimates, mid-2004, Office for National Statistics available in the Clinical and Health Outcomes Knowledge Base at [www.nchod.nhs.uk](http://www.nchod.nhs.uk)

## 5.8 Population change, 1981 to 2001

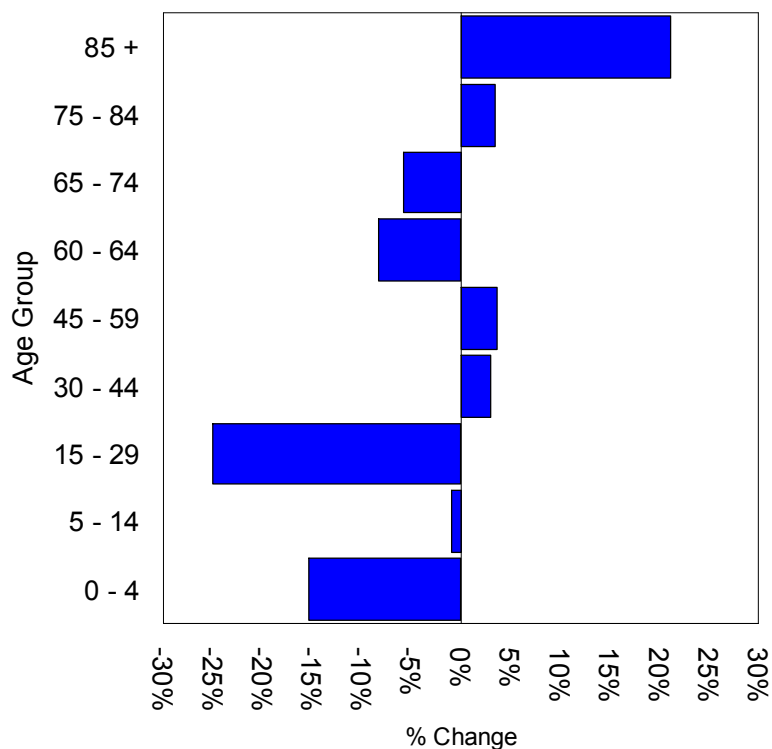
### Changes in total population

Area	Mid - 1981	Mid - 1991	2001 Census	% Change	
				1981 - 2001	1991 - 2001
Gateshead	213,246	203,078	191,151	-10.4%	-5.9%
Tyne & Wear	1,155,200	1,130,400	1,075,979	-6.9%	-4.8%
North East	2,636,200	2,602,500	2,515,442	-4.6%	-3.3%
England	46,821,000	47,875,000	50,093,762	7.0%	4.6%

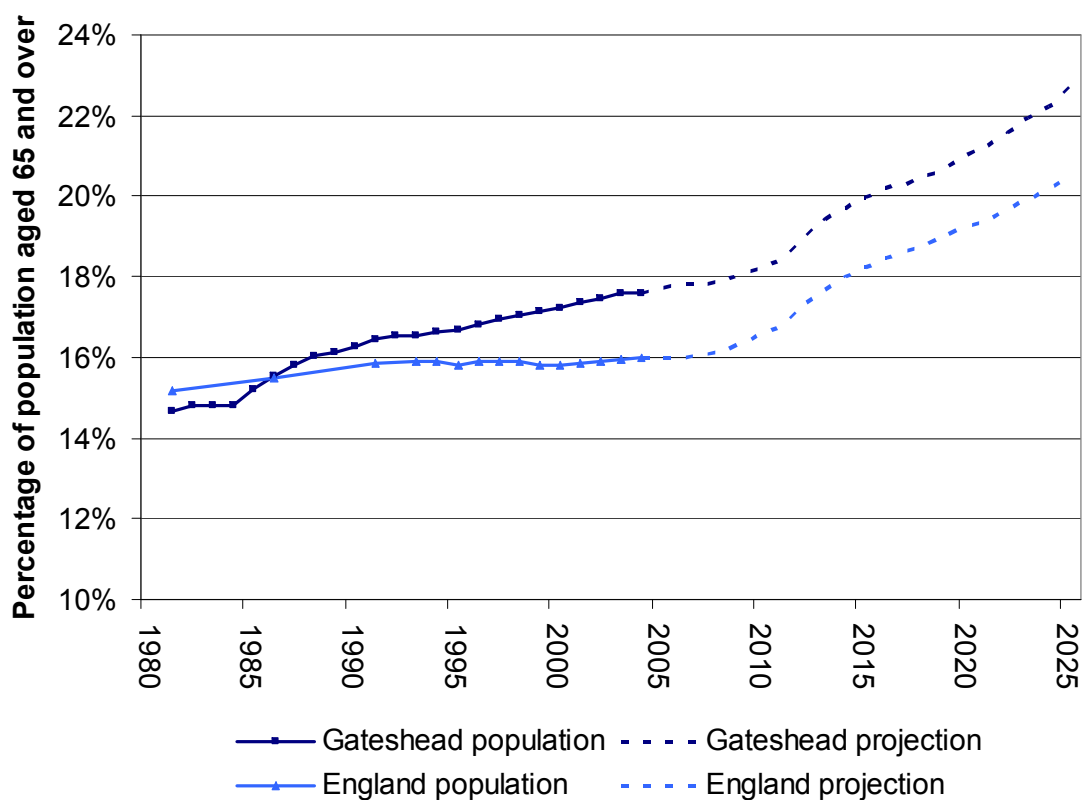
### Changes in size of selected age groups (mid 1981-2001 Census), Gateshead

Year	All ages	0 - 4	5 - 14	15 - 29	30 - 44	45 - 59	60 - 64	65 - 74	75 - 84	85 +
Mid 1981	213,246	12,348	30,002	47,495	40,508	39,427	12,046	19,855	9,729	1,836
Mid 1991	203,078	12,678	24,039	44,502	42,137	34,851	11,535	19,701	10,918	2,717
2001 Census	191,151	10,743	23,795	33,389	43,401	36,101	10,577	18,567	11,286	3,292
% change 1991 to 2001	-5.9%	-15.3%	-1.0%	-25.0%	3.0%	3.6%	-8.3%	-5.8%	3.4%	21.2%

### Percentage change in the population of Gateshead, 1991 to 2001



## 5.9 Proportion of the population aged over 65 years



Year	Gateshead		England	
	Population aged 65 and over (000's)	Percent of total population	Population aged 65 and over (000's)	Percent of total population
2004	33.7	17.6%	8,002	16.0%
2005	33.7	17.7%	8,064	16.0%
2010	34.2	18.2%	8,585	16.6%
2015	37.1	20.0%	9,674	18.2%
2020	38.8	21.0%	10,452	19.2%
2025	41.5	22.7%	11,370	20.5%

Sources: Gateshead population, Office for National Statistics 2003-based subnational population projections at [www.statistics.gov.uk](http://www.statistics.gov.uk)  
 England & Wales population, 2004-based national population projections, Government Actuary's Department at [www.gad.gov.uk](http://www.gad.gov.uk)

## 5.10 Self-reported health status by electoral ward at 2001 Census

Electoral ward boundaries in Gateshead changed in June 2004. The figures in this section apply to the ward boundaries in place prior to June 2004.

Wards are shown in descending order of percentage self-reporting "Not good health".

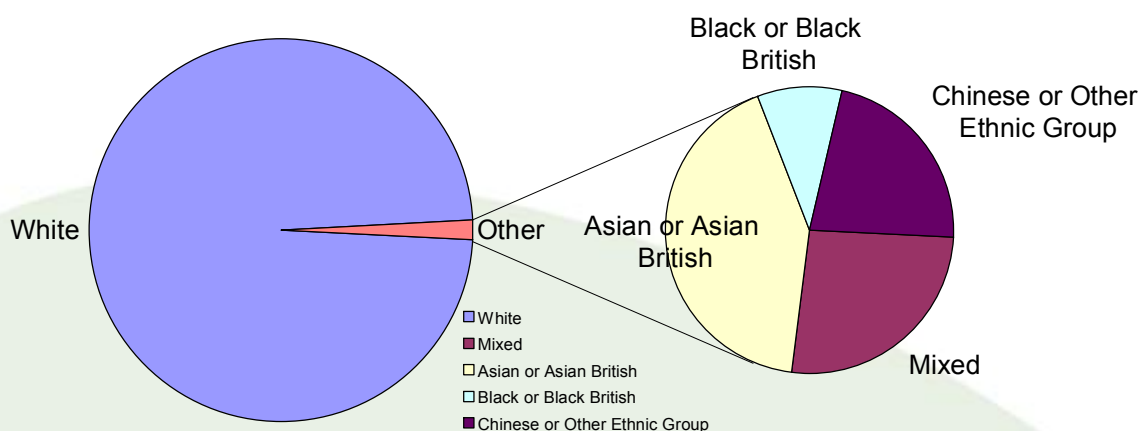
Ward	Good health		Fairly good health		Not good health		All People Count
	Count	%	Count	%	Count	%	
High Fell	4,553	56.7%	2,052	25.5%	1,429	17.8%	8,034
Felling	4,087	56.0%	1,972	27.0%	1,240	17.0%	7,299
Bede	4,075	57.2%	1,854	26.0%	1,193	16.8%	7,122
Teams	5,511	59.6%	2,330	25.2%	1,400	15.1%	9,241
Lamesley	4,618	59.1%	2,025	25.9%	1,169	15.0%	7,812
Deckham	4,864	61.7%	1,889	24.0%	1,131	14.3%	7,884
Winlaton	4,610	61.1%	1,896	25.1%	1,039	13.8%	7,545
Leam	6,128	61.7%	2,444	24.6%	1,353	13.6%	9,925
Pelaw and Heworth	4,856	60.5%	2,081	25.9%	1,089	13.6%	8,026
Chowdene	5,093	61.2%	2,131	25.6%	1,100	13.2%	8,324
Bensham	4,870	65.0%	1,635	21.8%	982	13.1%	7,487
Chopwell and Rowlands Gill	5,758	61.7%	2,341	25.1%	1,226	13.1%	9,325
Birtley	5,115	63.8%	1,884	23.5%	1,022	12.7%	8,021
Saltwell	5,136	63.1%	1,972	24.2%	1,033	12.7%	8,141
Wrekendyke	6,480	63.3%	2,464	24.1%	1,296	12.7%	10,240
Dunston	6,076	63.1%	2,341	24.3%	1,216	12.6%	9,633
Blaydon	5,597	63.9%	2,113	24.1%	1,048	12.0%	8,758
Whickham North	6,432	64.5%	2,378	23.8%	1,166	11.7%	9,976
Crawcrook and Greenside	6,046	64.8%	2,292	24.6%	993	10.6%	9,331
Ryton	6,032	65.4%	2,213	24.0%	974	10.6%	9,219
Low Fell	6,536	68.8%	2,070	21.8%	890	9.4%	9,496
Whickham South	7,147	69.3%	2,254	21.9%	911	8.8%	10,312

Source: Census 2001, Neighbourhood Statistics, Office for National Statistics at [neighbourhood.statistics.gov.uk](http://neighbourhood.statistics.gov.uk)

## 5.11 Population by ethnic group in Gateshead at 2001 Census

Ethnic Group		Count	Percentage
White	British	185,260	96.92%
	Irish	546	0.29%
	Other White	2,292	1.20%
	<b>Total</b>	<b>188,098</b>	<b>98.40%</b>
Mixed	White and Black Caribbean	238	0.12%
	White and Black African	85	0.04%
	White and Asian	284	0.15%
	Other Mixed	191	0.10%
	<b>Total</b>	<b>798</b>	<b>0.42%</b>
Asian or Asian British	Indian	490	0.26%
	Pakistani	491	0.26%
	Bangladeshi	120	0.06%
	Other Asian	188	0.10%
	<b>Total</b>	<b>1,289</b>	<b>0.67%</b>
Black or Black British	Caribbean	50	0.03%
	African	208	0.11%
	Other Black	31	0.02%
	<b>Total</b>	<b>289</b>	<b>0.15%</b>
Chinese or Other Ethnic Group	Chinese	364	0.19%
	Other Ethnic Group	313	0.16%
	<b>Total</b>	<b>677</b>	<b>0.35%</b>
<b>ALL PEOPLE</b>		<b>191,151</b>	<b>100.0%</b>

Source: Census 2001, Neighbourhood Statistics, Office for National Statistics at [neighbourhood.statistics.gov.uk](http://neighbourhood.statistics.gov.uk)



## 5.12 Population by marital status at 2001 Census

	ALL PEOPLE	Single (never married)		Married (first marriage)		Re-married	
	Count	Count	Percentage	Count	Percentage	Count	Percentage
<b>Gateshead</b>	<b>191,151</b>	<b>82,294</b>	<b>43.1%</b>	<b>66,829</b>	<b>35.0%</b>	<b>9,715</b>	<b>5.1%</b>
Newcastle	259,536	129,030	49.7%	78,085	30.1%	10,444	4.0%
North Tyneside	191,659	78,534	41.0%	68,204	35.6%	11,409	6.0%
South Tyneside	152,785	66,276	43.4%	51,879	34.0%	7,727	5.1%
Sunderland	280,807	125,507	44.7%	98,672	35.1%	13,302	4.7%
North East	2,515,442	1,081,999	43.0%	887,236	35.3%	137,904	5.5%
England	49,138,831	21,763,102	44.3%	17,069,491	34.7%	2,885,186	5.9%
England & Wales	52,041,916	22,999,751	44.2%	18,101,011	34.8%	3,057,652	5.9%

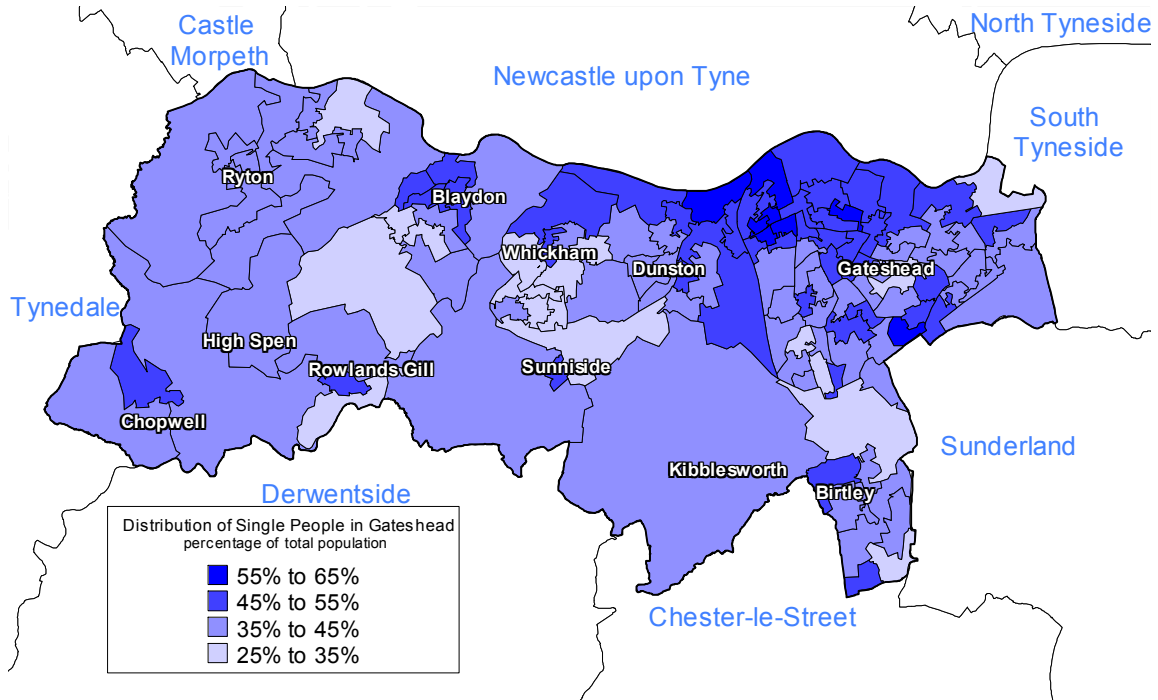
Source: Census 2001, Neighbourhood Statistics, Office for National Statistics at [neighbourhood.statistics.gov.uk](http://neighbourhood.statistics.gov.uk)

	ALL PEOPLE	Separated (still legally married)		Divorced		Widowed	
	Count	Count	Percentage	Count	Percentage	Count	Percentage
<b>Gateshead</b>	<b>191,151</b>	<b>3,883</b>	<b>2.0%</b>	<b>13,386</b>	<b>7.0%</b>	<b>15,044</b>	<b>7.9%</b>
Newcastle	259,536	5,826	2.2%	17,092	6.6%	19,059	7.3%
N Tyneside	191,659	4,144	2.2%	14,024	7.3%	15,344	8.0%
S Tyneside	152,785	3,304	2.2%	11,037	7.2%	12,562	8.2%
Sunderland	280,807	4,842	1.7%	18,411	6.6%	20,073	7.1%
North East	2,515,442	48,960	1.9%	171,451	6.8%	187,892	7.5%
England	49,138,831	941,911	1.9%	3,219,984	6.6%	3,259,157	6.6%
Eng & Wales	52,041,916	985,731	1.9%	3,420,978	6.6%	3,476,793	6.7%

Source: Census 2001, Neighbourhood Statistics, Office for National Statistics at [neighbourhood.statistics.gov.uk](http://neighbourhood.statistics.gov.uk)

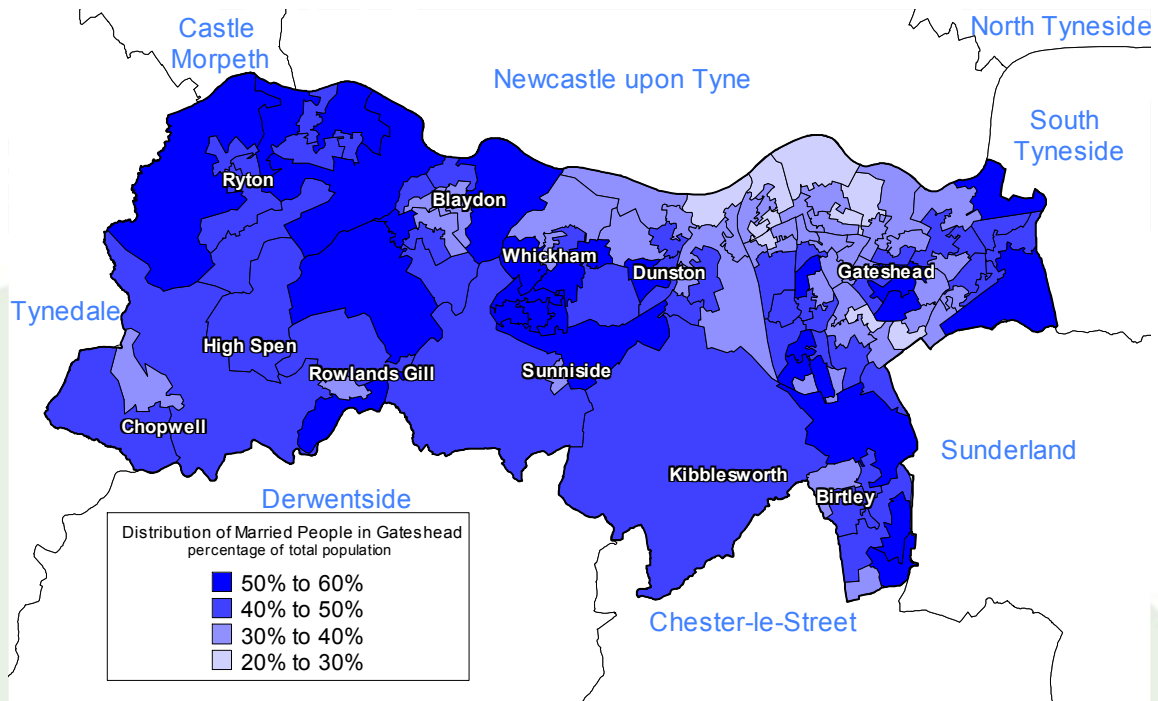
## 5.12 Population by marital status (cont.)

Distribution of single people in Gateshead



Source: Census 2001, Neighbourhood Statistics, Office for National Statistics at [neighbourhood.statistics.gov.uk](http://neighbourhood.statistics.gov.uk)

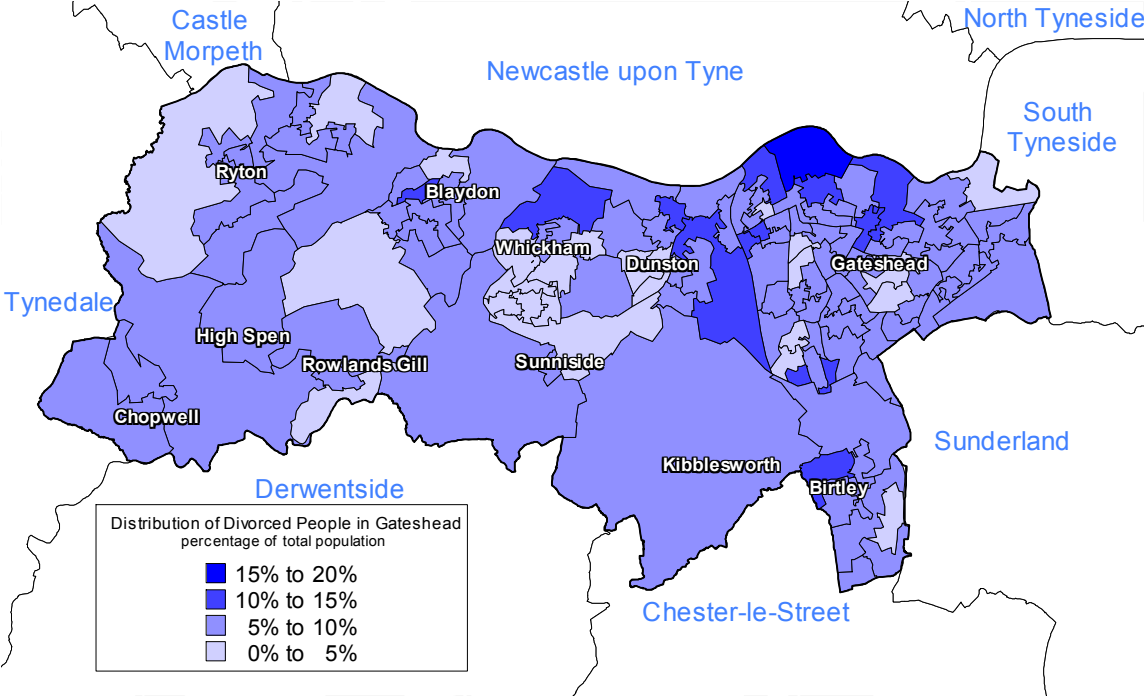
Distribution of married people in Gateshead



Source: Census 2001, Neighbourhood Statistics, Office for National Statistics at [neighbourhood.statistics.gov.uk](http://neighbourhood.statistics.gov.uk)

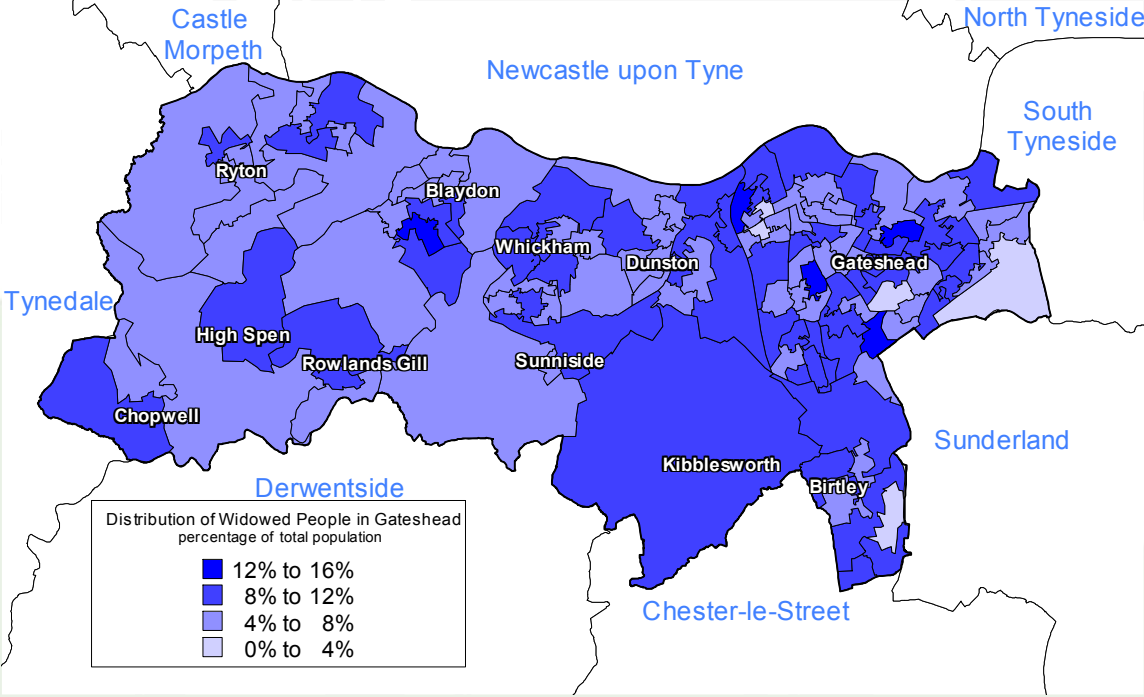
**5.12 Population by marital status (cont.)**

Distribution of divorced people in Gateshead



Source: Census 2001, Neighbourhood Statistics, Office for National Statistics at [neighbourhood.statistics.gov.uk](http://neighbourhood.statistics.gov.uk)

Distribution of widowed people in Gateshead



Source: Census 2001, Neighbourhood Statistics, Office for National Statistics at [neighbourhood.statistics.gov.uk](http://neighbourhood.statistics.gov.uk)

## 5.13 Job seekers

Numbers of people receiving Job Seeker's Allowance for 12 months or more and number as a percentage of all Job Seeker's Allowance claimants

	Gateshead	Gateshead (%)	North East (%)	England (%)
Jan-96	3735	37.8	37.0	35.1
Jan-97	2990	39.2	38.5	36.3
Jan-98	1780	27.7	28.4	26.7
Jan-99	1315	22.9	25.5	24.5
Jan-00	1145	21.8	22.7	22.2
Jan-01	850	18.9	20.8	19.6
Jan-02	775	16.7	17.3	16.4
Jan-03	725	17.8	15.5	14.6
Jan-04	515	13.8	13.2	15.0
Jan-05	445	12.3	11.8	14.4
Jan-06	455	12.9	13.0	14.0

Source: NOMIS, Office for National Statistics at [www.nomisweb.co.uk](http://www.nomisweb.co.uk)

Numbers of people receiving Job Seeker's Allowance and number as a percentage of resident working age population

	Gateshead	Gateshead (%)	North East (%)	England (%)
Jan-96	9,884	8.3	8.3	6.4
Jan-97	7,622	6.4	6.9	5.2
Jan-98	6,415	5.5	6.0	4.0
Jan-99	5,733	4.9	5.7	3.7
Jan-00	5,244	4.5	5.3	3.3
Jan-01	4,497	3.9	4.7	2.8
Jan-02	4,630	4.0	4.3	2.7
Jan-03	4,066	3.5	3.9	2.6
Jan-04	3,719	3.2	3.5	2.5
Jan-05	3,615	3.1	3.1	2.3
Jan-06	3,533	3.0	3.3	2.5

Source: NOMIS, Office for National Statistics at [www.nomisweb.co.uk](http://www.nomisweb.co.uk)

## 5.14 House Price/Earnings Affordability Ratio

A study undertaken in 2002<sup>3</sup>, published by the Joseph Rowntree Foundation, looked at the affordability of 4/5 bedroom dwellings for a household with average income in each local authority area in England. Affordability is expressed as a ratio of average house price to average household income. The work was updated by studies in 2003<sup>4</sup> and 2004<sup>5</sup>, which focused on the affordability of 2/3 bedroom dwellings for younger households (20 to 39 years).

### 2004, affordability ratios for 2/3 bedroom dwellings among younger households (20 to 39 years)

	2002 mean house prices 2/3 bedroom dwellings (£)	Average household earned incomes (£)	House price to income ratios
Gateshead	103,910	30,168	3.44
Newcastle upon Tyne	99,578	29,927	3.33
North Tyneside	109,252	30,274	3.61
South Tyneside	97,749	29,772	3.28
Sunderland	97,539	26,623	3.66
North East	98,528	29,428	3.35
England	159,986	38,106	4.20

Source: Joseph Rowntree Foundation at [www.jrf.org.uk](http://www.jrf.org.uk)

### 2003, affordability ratios for 2/3 bedroom dwellings among younger households (20 to 39 years)

	2003 mean house prices 2/3 bedroom dwellings (£)	Average household earned incomes (£)	House price to income ratios
Gateshead	93,836	28,302	3.32
Newcastle upon Tyne	113,725	31,270	3.64
North Tyneside	98,515	30,699	3.21
South Tyneside	85,491	27,314	3.13
Sunderland	85,051	27,726	3.07
North East	89,976	28,227	3.19
England	150,235	36,549	4.11

Source: Joseph Rowntree Foundation at [www.jrf.org.uk](http://www.jrf.org.uk)

<sup>3</sup> Wilcox S (2003) "Can work – can't buy: Local measures of the ability of working households to become home owners", Joseph Rowntree Foundation

<sup>4</sup> Wilcox S (2004) "Affordability differences by area for working households buying their homes – 2003 update", Joseph Rowntree Foundation

<sup>5</sup> Wilcox S (2005) "Affordability and the intermediate housing market: Local measures for all local authority areas in Great Britain", Joseph Rowntree Foundation

### 5.14 House Price/Earnings Affordability Ratio (cont.)

#### 2002, affordability ratios for 4/5 bedroom dwellings among younger households (20 to 39 years)

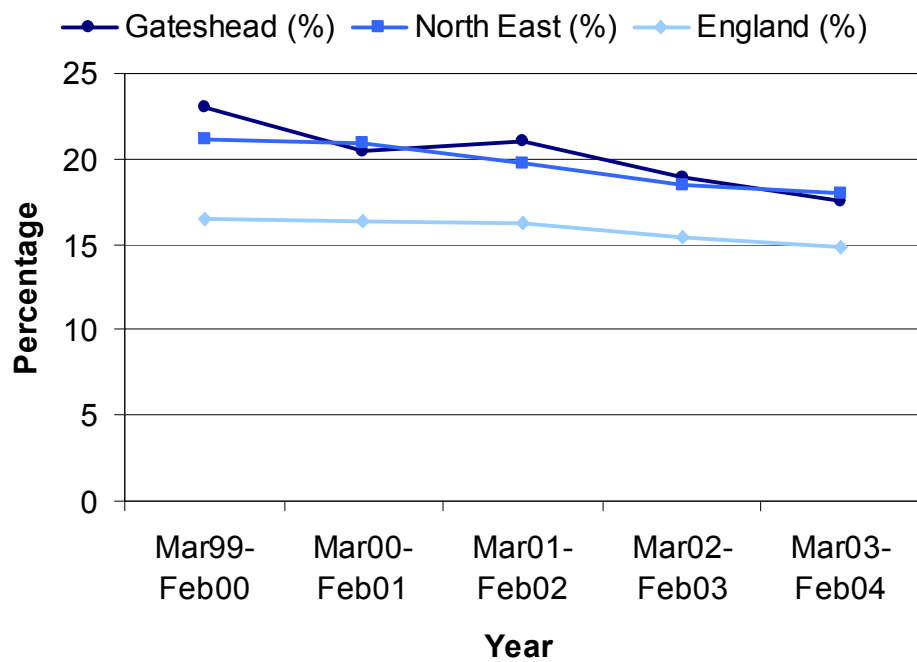
	1998 mean house prices 4/5 bedroom dwellings (£)	2002 mean house prices 4/5 bedroom dwellings (£)	Average working household incomes (£)	House price to income ratio
Gateshead	42,384	61,626	28,874	2.13
Newcastle	46,365	67,415	30,555	2.21
North Tyneside	42,965	62,471	28,119	2.22
South Tyneside	39,751	57,798	27,592	2.09
Sunderland	40,313	58,615	25,780	2.27
North East	-	62,089	27,405	2.27
England	-	115,181	34,197	3.37

Source: Joseph Rowntree Foundation at [www.jrf.org.uk](http://www.jrf.org.uk)

## 5.15 Number and percentage of people of working age with no qualifications

	Gateshead (number)	Gateshead (%)	North East (%)	England (%)
Mar 99 - Feb 00	28,000	23.0	21.2	16.5
Mar 00 - Feb 01	24,000	20.5	20.9	16.4
Mar 01 - Feb 02	24,000	21.0	19.7	16.2
Mar 02 - Feb 03	22,000	18.9	18.4	15.4
Mar 03 - Feb 04	20,000	17.5	18.0	14.8

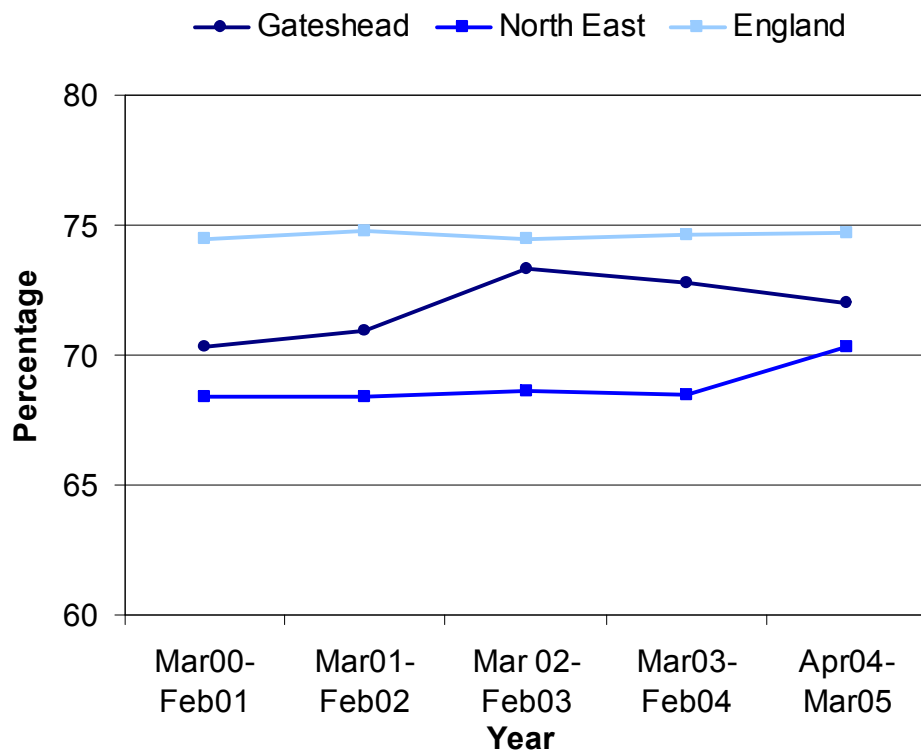
Source: Annual Labour Force Survey, published by NOMIS, Office for National Statistics at [www.nomisweb.co.uk](http://www.nomisweb.co.uk)



## 5.16 Number of people of working age who are in employment in Gateshead and percentage of all people of working age in employment

	Gateshead (number)	Gateshead (%)	North East (%)	England (%)
Mar 00 - Feb 01	82,000	70.3	68.4	74.5
Mar 01 - Feb 02	82,000	70.9	68.4	74.8
Mar 02 - Feb 03	85,000	73.3	68.6	74.5
Mar 03 - Feb 04	84,700	72.8	68.5	74.6
Apr 04 - Mar 05	83,500	72.0	70.3	74.7

Source: 2000-2004, Annual Labour Force Survey; 2004-2005 Annual Population Survey, published by NOMIS, Office for National Statistics at [www.nomisweb.co.uk](http://www.nomisweb.co.uk)



## 5.17 Connexions

Connexions Tyne and Wear offer impartial information, advice and guidance to young people between the ages of 13-19 years or up to age 25 if they hold a Statement of Special Educational Needs. Personal Advisers work to support the successful transition of young people into education, employment and training, while offering a brokerage and referral service to a range of specialist agencies in order to address the barriers to progression. Connexions staff are also linked to a range of special projects including work within Gateshead Youth Offending Team and the Education Welfare Service. Young people can meet a Personal Adviser in a range of contexts, including school, college, youth club or at the Connexions Centre.

Other initiatives include:

- providing Positive Activities for Young People (PAYP) programmes to teenagers in the school holidays. These programmes include personal development opportunities in drama, ICT and sport. PAYP workers also provide a targeted one-to-one service for those young people in need of intensive support.
- organising the Gateshead Youth Engagement Shadow (YES) Forum. This is a group of young people who aim to ensure that peers are involved in influencing the Connexions strategy.
- hosting work experience placements for young people from local schools
- running Young Volunteer Challenge programmes for those aged 16 to 19 years.

Connexions Tyne and Wear in Gateshead can be found at:

The Interchange Centre  
West Street  
Gateshead  
Tyne and Wear  
NE8 1BH

Telephone: 0191 443 4218

Open: 9.30 am – 5.30 pm (Monday-Friday) & 10.00 am – 3.00 pm (Saturdays)

The Connexions Tyne and Wear website, including a 24-hour on-line vacancy service, is available at [www.connexions-tw.co.uk](http://www.connexions-tw.co.uk).

A helpline service is also available. Young people can call free on 0800 073 8700 (8.30 am – 5.30 pm, Monday-Friday) or can e-mail enquiries to [helpline@connexions-tw.co.uk](mailto:helpline@connexions-tw.co.uk).

## 5.18 Pathways to Work

The aim of Pathways to Work is to encourage customers claiming Incapacity Benefit (IB) or Income Support (IS) on the ground of incapacity; aged 18 to 59, to consider work opportunities by providing a framework of support in the early stages of their claim. In this way they are able to benefit from access to a wide range of provision and improved financial incentives. It should also provide a more effective and efficient benefit assessment process as well as better support for people who move from IB to Jobseekers Allowance (JSA).

Pathways to Work went live in Gateshead and South Tyneside in April 2004, and is currently expanding, to include City of Sunderland and County Durham (go live date May 2006).

### **Framework of advisory support**

Pathways to Work activity engages customers and provides effective support undertaking the first Work Focused Interview (WFI) at around the eighth week of their claim. This seeks to:

- Avoid an unnecessary interview for people who get better quickly and return to work or Jobsearch.
- Allow the claim to benefit to be fully processed before the WFI so that the customer is better able to focus on work; and
- Offer a chance for the customer's health to stabilise, making it easier to focus on possible work options.
- Ensure all new IB customers receive support from teams of specialist IB Personal Advisers (IB PA). The aim is to enable IB PAs to directly support customers back to work or onto a relevant employment programme, and to give them a better understanding of how to overcome the obstacles to work reported by many customers in receipt of these benefits.

### **Direct access to a wide range of help**

People claiming IB already have access to a range of disability and mainstream employment programmes such as the New Deal for Disabled People (NDDP), Work-Based Learning for Adults (WBLA) and basic skills provision.

Pathways to Work offers access to a wider range of help and financial incentives through the 'Choices Package' for IB customers – balancing improved opportunities with greater responsibilities to actively consider a return to work

Customers in Pathways to Work locations also have immediate and direct access through their IB PA to:

- The full range of existing Jobcentre Plus programmes including Programme Centres, Work Trials, Disability Service Programmes and a wide variety of provision available through the New Deals and Employment Zones (EZ).
- NHS led health-focused Condition Management Programmes (CMP) focusing on those mild to moderate conditions most commonly experienced by IB customers i.e. mental health, musculo-skeletal; and cardiovascular conditions.

...cont.

### **5.18 Pathways to Work (cont.)**

#### **Financial incentives**

The Working Tax Credit (WTC), from April 2003, improved incentives for many customers. To further encourage people to look for jobs and improve the certainty that they will be better off moving into work, Pathways to Work additionally:

- Promotes a Return to Work Credit (RTWC), to help those moving off IB back to employment. It is paid at £40 a week for 52 weeks where personal earnings in work will be less than £15,000 a year.
- Widens the access to the Adviser Discretion Fund (ADF) for all IB customers. ADF access is available from day one of their claim. The IB PA will be able to make discretionary awards of up to £100 to spend on anything that will help their customer obtain a job (e.g. new clothes for an interview or work equipment).
- Gives access from day one of their claim to customers eligible for the Job Grant.

For further information contact: Kirsty Morrison, Ability to Work Adviser Manager, Gateshead Job Centre Plus, Shildon House, High Street, Gateshead NE8 1AS, tel.: 0191 451 4102



